

LAVAA SIX DEPARTURE (RNAV)

AL-330 (FAA)

9145 2019 JAN 03 11:30 '17-WN

DEPARTURE ROUTE DESCRIPTION

- TAKEOFF RUNWAYS 10L/R:** Climb heading 103° to 540, then direct to RIVRR, then on depicted route to LAVAA, thence. . . .
- TAKEOFF RUNWAY 28L:** Climb heading 283° to 540, then direct PEGTY, then on depicted route to LAVAA, thence. . . .
- TAKEOFF RUNWAY 28R:** Climb heading 283°, intercept course 268° to PEGTY, then on depicted route to LAVAA, thence. . . .
- . . . via (Transition), maintain assigned altitude, expect filed altitude 10 minutes after departure.

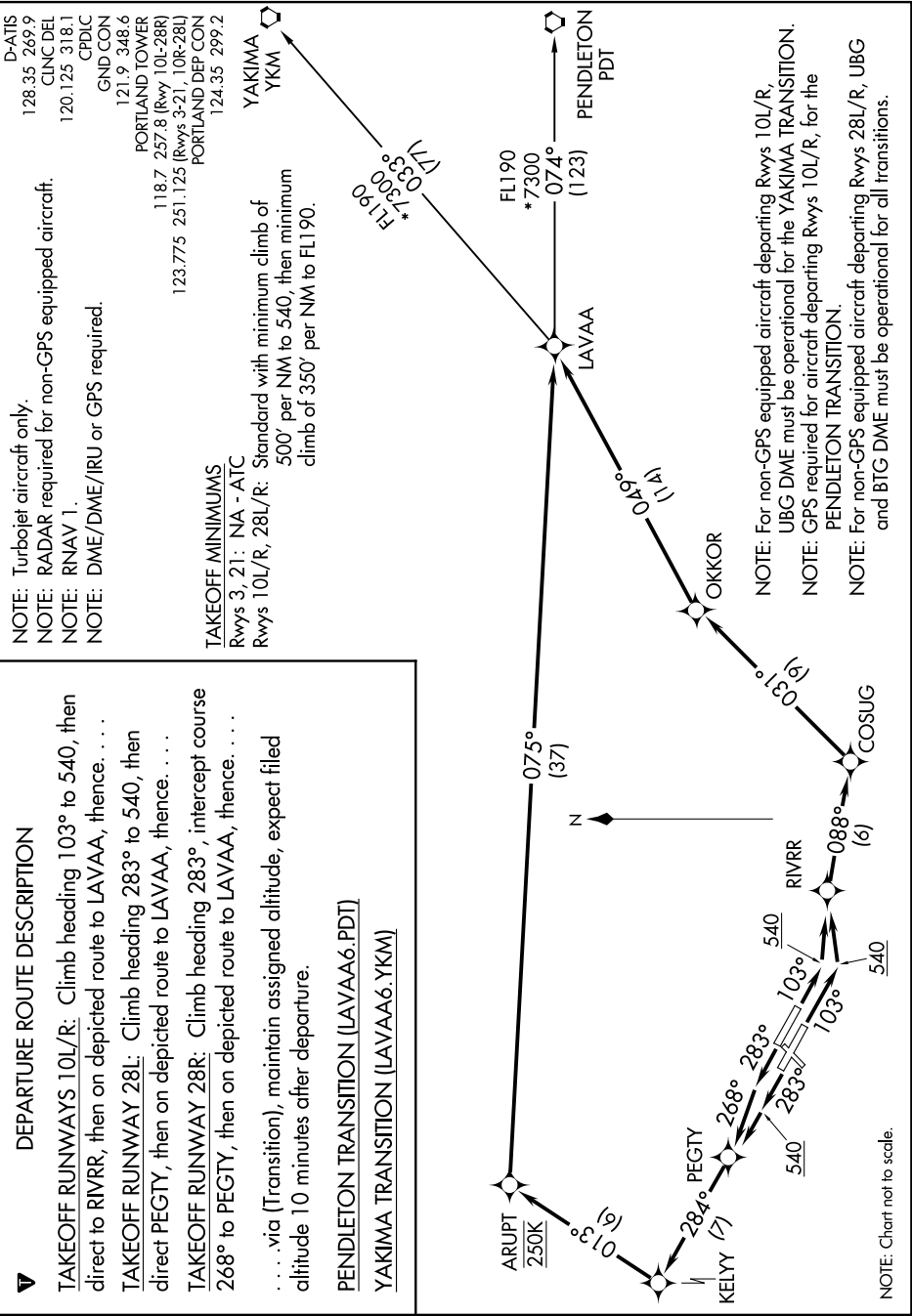
PENDELTON TRANSITION (LAVAA6.PDT)

YAKIMA TRANSITION (LAVAA6.YKM)

NOTE: Turbojet aircraft only.
NOTE: RADAR required for non-GPS equipped aircraft.
NOTE: RNAV 1.
NOTE: DME/DME/IRU or GPS required.

D-AITS
 128.35 269.9 CINC DEL
 120.125 318.1 CPDLC
 GND:CON
 121.9 348.6
 PORTLAND TOWER
 118.7 257.8 (Rwy 10L-28R)
 123.775 251.125 (Rwys 3-21, 10R-28L)
 PORTLAND DEP CON
 124.35 299.2

TAKEOFF MINIMUMS
 Rwys 3, 21: NA - ATC
 Rwys 10L/R, 28L/R: Standard with minimum climb of 500' per NM to 540, then minimum climb of 350' per NM to FL190.



NOTE: For non-GPS equipped aircraft departing Rwys 10L/R, UBG DME must be operational for the YAKIMA TRANSITION.
NOTE: GPS required for aircraft departing Rwys 10L/R, for the PENDELTON TRANSITION.
NOTE: For non-GPS equipped aircraft departing Rwys 28L/R, UBG and BTG DME must be operational for all transitions.

LAVAA SIX DEPARTURE (RNAV)

NW-1, 03 JAN 2019 to 31 JAN 2019