


APP CRS	Rwy Idg <b>11000</b>
<b>283°</b>	TDZE <b>23</b>
	Apt Elev <b>31</b>

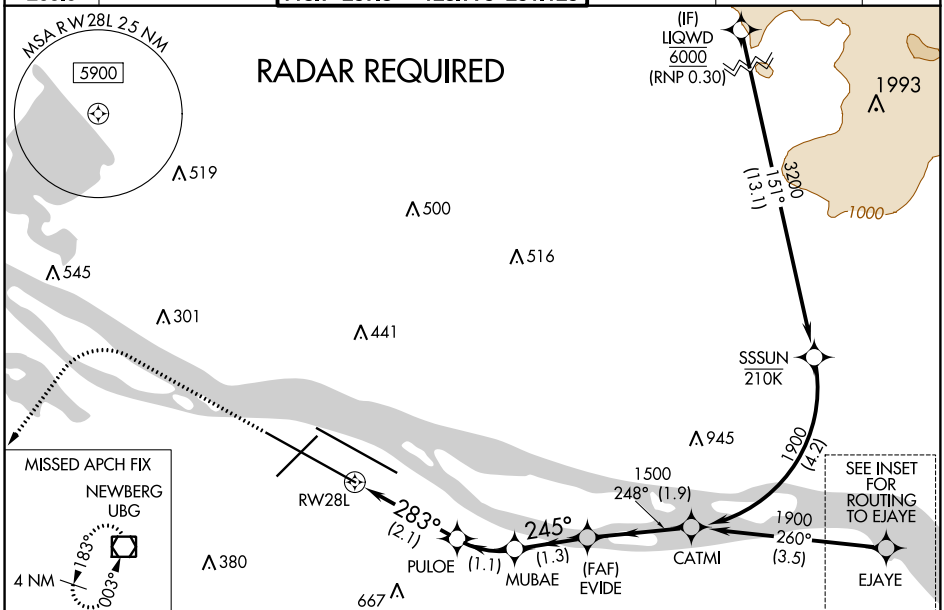
# RNAV (RNP) Y RWY 28L

PORTLAND INTL (PDX)

▼ For uncompensated Baro-VNAV systems, procedure NA below -7°C (20°F) or above 54°C (130°F). For inop MAALS, increase RNP 0.23 all Cats visibility to RVR 5600 and increase RNP 0.30 all Cats visibility to 1½ mile. Simultaneous approach authorized with Rwy 28R. RF required. GPS required. Use of FD or AP providing RNAV track guidance required during simultaneous operations.

**MAALS**  **MISSED APPROACH:** Climb to 2100 then climbing left turn to 4000 direct UBG VOR/DME and hold.

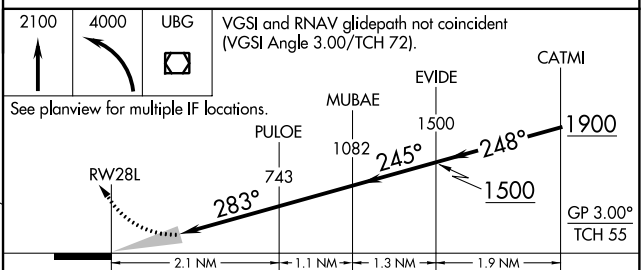
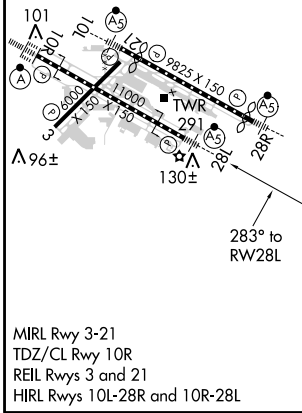
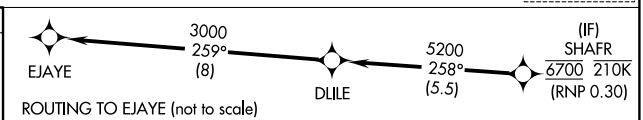
D-ATIS <b>128.35</b> <b>269.9</b>	PORTLAND APP CON <b>124.35 299.2</b>	PORTLAND TOWER Rwy 10L-28R Rwy 3-21, 10R-28L <b>118.7 257.8 123.775 251.125</b>	GND CON <b>121.9 348.6</b>	CLNC DEL <b>120.125 318.1</b>	CPDLC
---	---	---	-------------------------------	----------------------------------	-------



NW-1, 03 JAN 2019 to 31 JAN 2019

NW-1, 03 JAN 2019 to 31 JAN 2019

ELEV <b>31</b>	<b>D</b>	TDZE <b>23</b>
----------------	----------	----------------



CATEGORY	A	B	C	D
RNP 0.23 DA		370/33	347 (400-5/8)	
RNP 0.30 DA		476/53	453 (500-1)	

## AUTHORIZATION REQUIRED