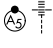


APP CRS	Rwy Idg	8535
103°	TDZE	30
	Apt Elev	31

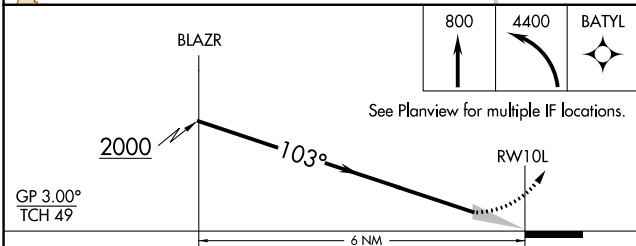
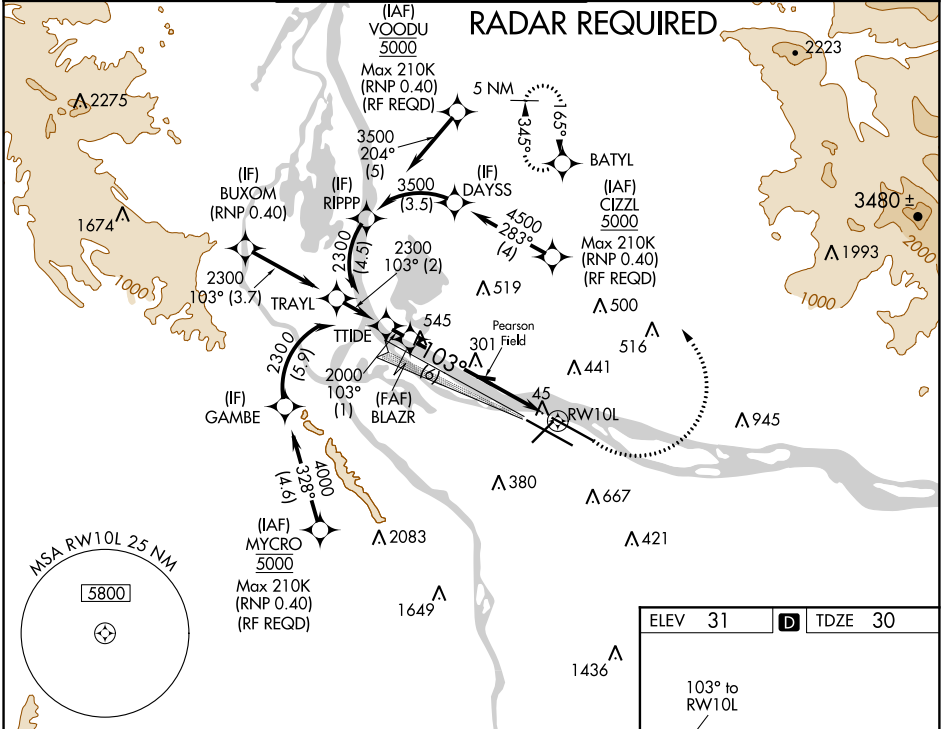
RNAV (RNP) Z RWY 10L

PORTLAND INTL (PDX)

GPS required. For inop MALSR, increase RNP 0.30 all Cats visibility to RVR 5500. For uncompensated Baro-VNAV systems, procedure NA below -6°C (22°F) or above 54°C (130°F). Simultaneous approach authorized with Rwy 10R, except for arrivals at CIZL, VOODOU, and MYCRO. Use of FD or AP providing RNAV track guidance required for simultaneous operations.

MALSR

MISSED APPROACH: Climb to 800 then climbing left turn to 4400 direct BATYL and hold, continue climb-in-hold to 4400.

D-ATIS 128.35 269.9	PORTLAND APP CON 124.35 299.2	PORTLAND TOWER Rwy 10L-28R 118.7 257.8 Rwys 3-21, 10R-28L 123.775 251.125	GND CON 121.9 348.6	CLNC DEL 120.125 318.1	CPDLC
---	---	---	-------------------------------	----------------------------------	-------



ELEV 31	TDZE 30
REIL Rwys 3 and 21 TDZ/CL Rwy 10R MIRL Rwy 3-21 HIRL Rwys 10L-28R and 10R-28L	

CATEGORY	A	B	C	D
RNP 0.30 DA	365/32 335 (400-5%)			
AUTHORIZATION REQUIRED				

NW-1, 03 JAN 2019 to 31 JAN 2019

NW-1, 03 JAN 2019 to 31 JAN 2019