

RNAV (RNP) Z RWY 10R

PORTLAND INTL (PDX)

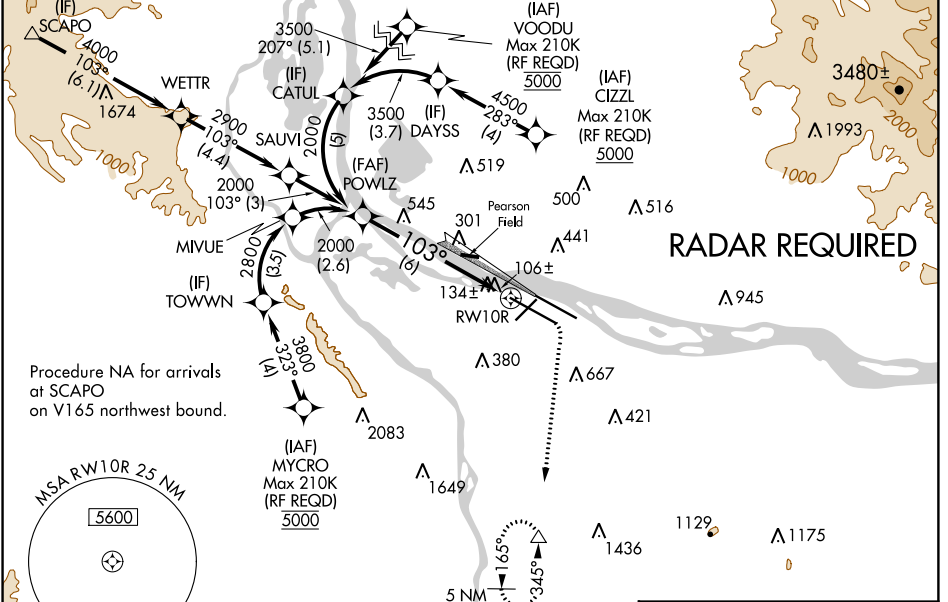
APP CRS	Rwy Idg	11000
103°	TDZE	24
	Apt Elev	31

GPS required. For inoperative ALSF, increase RNP 0.10 all Cats visibility to RVR 5000 and 0.30 all Cats visibility to 1 $\frac{1}{2}$ miles. For uncompensated Baro-VNAV systems, procedure NA below -15°C (5°F) or above 54°C (130°F). Simultaneous approach authorized with Rwy 10L. Use of FD or AP providing RNAV track guidance required during simultaneous operations.



MISSED APPROACH: Climb to 440 then climbing right turn to 5000 direct MULES and hold, continue climb-in-hold to 5000.

D-ATIS 128.35 269.9	PORTLAND APP CON 124.35 299.2	PORTLAND TOWER Rwy 10L-28R 118.7 257.8	Rwys 3-21, 10R-28L 123.775 251.125	GND CON 121.9 348.6	CLNC DEL 120.125 318.1	CPDLC
---	---	---	--	-------------------------------	----------------------------------	-------

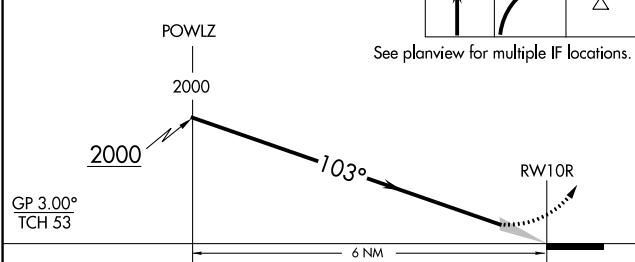


NW-1, 03 JAN 2019 to 31 JAN 2019

NW-1, 03 JAN 2019 to 31 JAN 2019

ELEV	31	D	TDZE	24
------	----	---	------	----

VGSI and RNAV glidepath not coincident (VGSI Angle 3.00/TCH 71).



CATEGORY	A	B	C	D
RNP 0.10 DA		347/32	323 (400- $\frac{3}{4}$)	
RNP 0.30 DA		449/50	425 (500-1)	

AUTHORIZATION REQUIRED

103° to RWY 10R

REIL Rwys 3 and 21
TDZ/CL Rwy 10R
MIRL Rwy 3-21
HIRL Rwys 10L-28R and 10R-28L