


APP CRS	Rwy Idg	11000
283°	TDZE	23
	Apt Elev	31

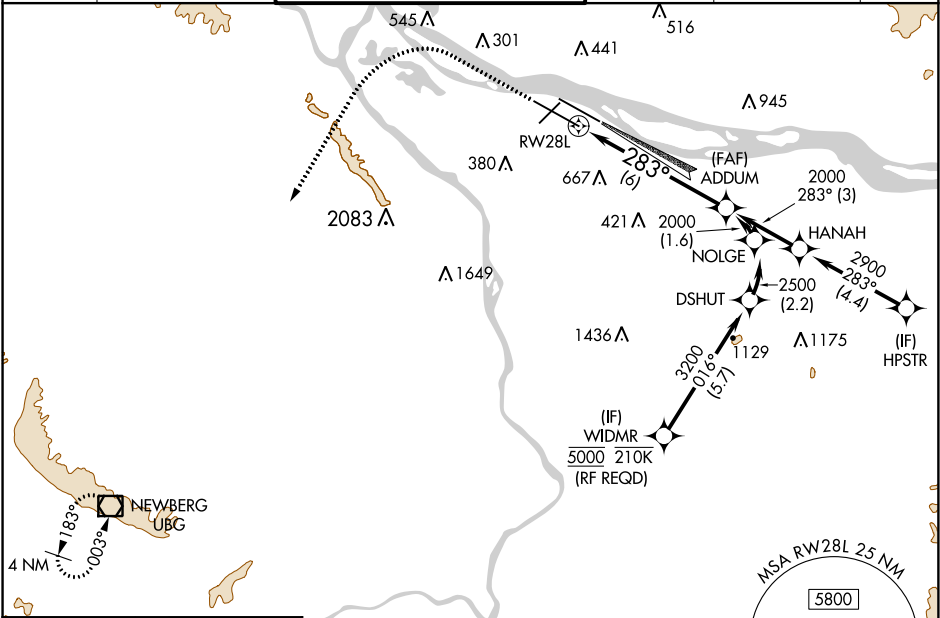
RNAV (RNP) Z RWY 28L

PORTLAND INTL (PDX)

▼ For uncompensated Baro-VNAV systems, procedure NA below -15°C (5°F) or above 54°C (130°F). For inoperative MALS, increase RNP 0.27 all Cats visibility to RVR 6000 and increase RNP 0.30 all Cats visibility to 1½ mile. Simultaneous approach authorized with Rwy 28R. GPS Required. Use of FD or AP providing RNAV track guidance required during simultaneous operations.

MALS  MISSED APPROACH: Climb to 2100 then climbing left turn to 4000 direct UBG VOR/DME and hold.

D-ATIS 128.35 269.9	PORTLAND APP CON 124.35 299.2	PORTLAND TOWER Rwy 10L-28R Rwy 3-21, 10R-28L 118.7 257.8 123.775 251.125	GND CON 121.9 348.6	CLNC DEL 120.125 318.1	CPDLC
---	---	---	-------------------------------	----------------------------------	-------

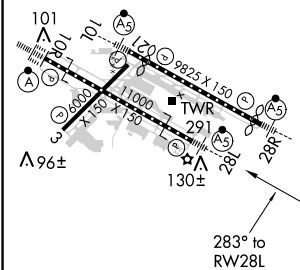


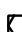
NW-1, 03 JAN 2019 to 31 JAN 2019

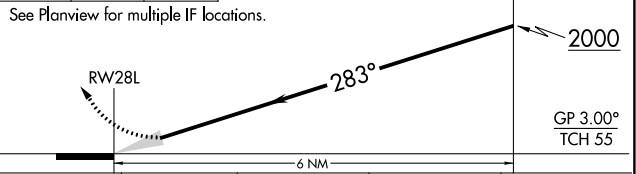
NW-1, 03 JAN 2019 to 31 JAN 2019

ELEV 31	D	TDZE 23
---------	----------	---------

RADAR REQUIRED



2100	4000	UBG 	VGSI and RNAV glidepath not coincident (VGSI Angle 3.00/TCH 72).
------	------	---	--



REIL Rwys 3 and 21
TDZ/CL Rwy 10R
MIRL Rwy 3-21
HIRL Rwys 10L-28R and 10R-28L

CATEGORY	A	B	C	D
RNP 0.27 DA		374/35	351 (400-½%)	
RNP 0.30 DA		494/60	471 (500-1¼)	

AUTHORIZATION REQUIRED