

WAAS CH <b>60905</b> <b>W28A</b>	APP CRS <b>283°</b>	Rwy Idg TDZE Apt Elev	<b>9290</b> <b>31</b> <b>31</b>
--	------------------------	-----------------------------	---------------------------------------

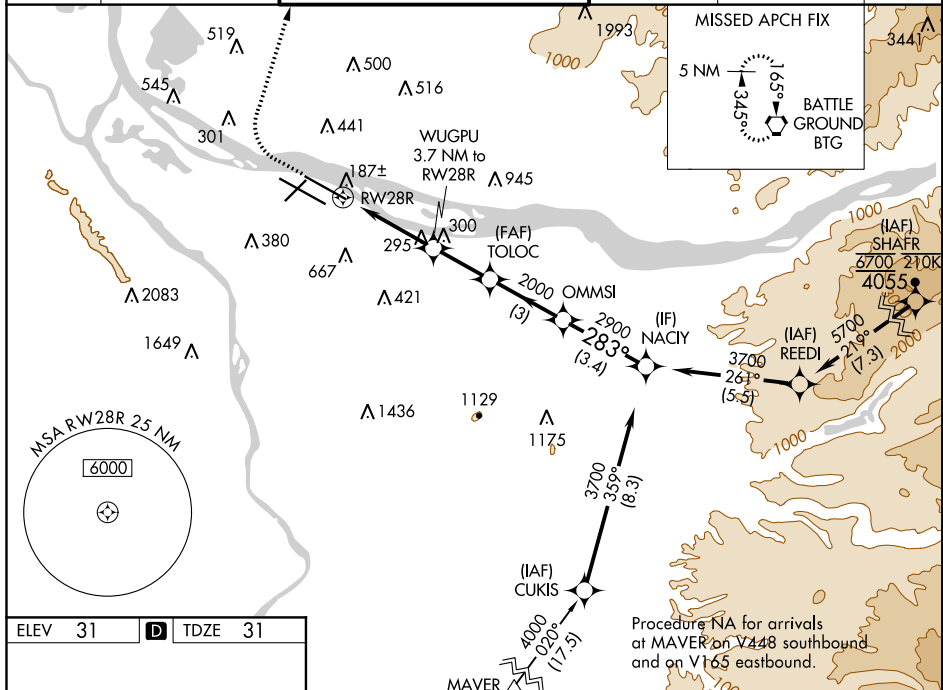
# RNAV (GPS) X RWY 28R

PORTLAND INTL (PDX)

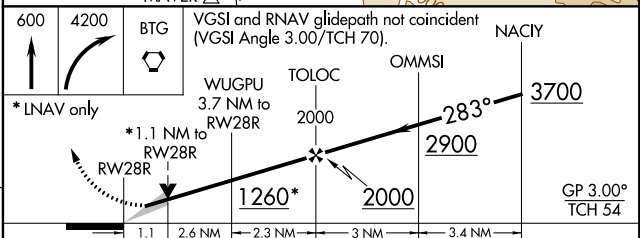
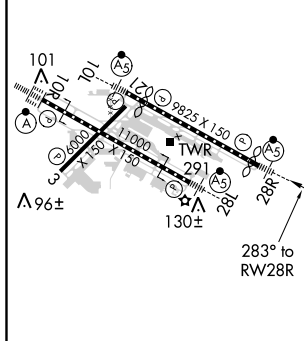
**▽** For uncompensated Baro-VNAV systems, LNAV/VNAV NA below -6°C (22°F) or above 54°C (130°F). Simultaneous approach authorized. LNAV procedure NA during simultaneous operations. DME/DME RNP-0.3 NA. Use of FD or AP providing RNAV track guidance required during simultaneous operations. For inop ALS increase LNAV Cat C/D visibility to RVR 6000.

**MALSR**  
**MISSED APPROACH:** Climb to 600 then climbing right turn to 4200 direct BTG VORTAC and hold, continue climb-in-hold to 4200.

D-ATIS <b>128.35</b> <b>269.9</b>	PORTLAND APP CON <b>124.35 299.2</b>	PORTLAND TOWER Rwy 10L-28R <b>118.7 257.8</b> Rwys 3-21, 10R-28L <b>123.775 251.125</b>	GND CON <b>121.9 348.6</b>	CLNC DEL <b>120.125 318.1</b>	CPDLC
---	---	---	-------------------------------	----------------------------------	-------



ELEV 31	<b>D</b>	TDZE 31
---------	----------	---------



CATEGORY	A	B	C	D
LPV DA		281/24	250 (300-½)	
LNAV/VNAV DA		446/45	415 (500-¾)	
LNAV MDA	440/24	409 (500-½)	440/40	409 (500-¾)
<b>C</b> CIRCLING	720-1 689 (700-1)	760-1 729 (800-1)	1060-3	1029 (1100-3)

REIL Rwys 3 and 21  
TDZ/CL Rwy 10R  
MIRL Rwy 3-21  
HIRL Rwys 10L-28R and 10R-28L

NW-1, 03 JAN 2019 to 31 JAN 2019

NW-1, 03 JAN 2019 to 31 JAN 2019