

PORTLAND, OREGON

TACAN RWY 28L

TACAN CBU Chan 29	APCH CRS 275°	Rwy ldg 11,000 TDZE 23 Arprt Elev 31
-----------------------------	-------------------------	---

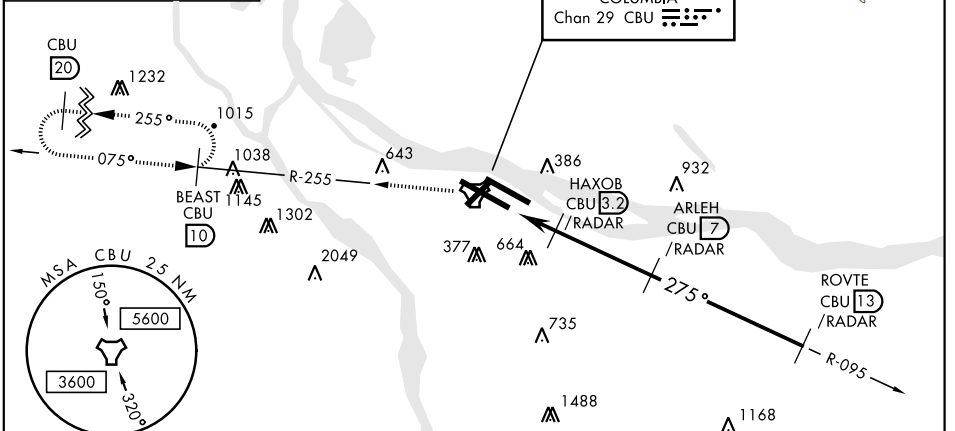
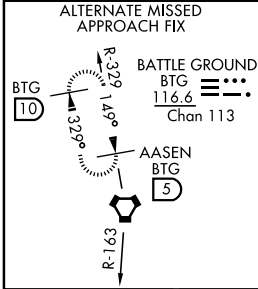
AL-330 [USAF]

PORTLAND INTL (KPDX)

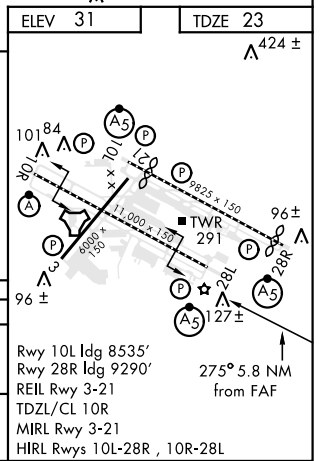
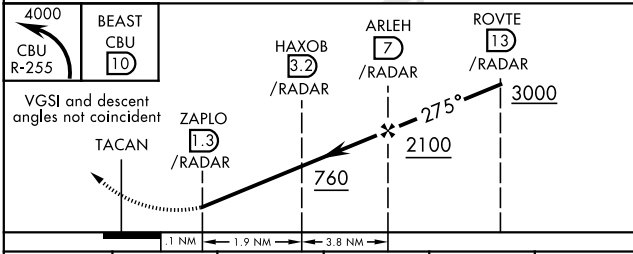
⚠ *When ALS inop, increase CAT AB RVR to 50 and vis to 1 mile, CAT C vis to 1½ miles, CAT D vis to ¾ miles, CAT E vis to 2 miles
⚠ **When VGSI rwy 28R inop, circling rwy 28R NA at night.

MALSR **† MISSED APPROACH:** Climbing left turn to 4000 via CBU TACAN R-255 to BEAST INT/ CBU 10 DME and hold or when directed by ATC.

ATIS 128.35 269.9	PORTLAND APP CON 124.35 299.2	PORTLAND TOWER 118.7 257.8 Rwy 10L-28R 123.775 251.125 Rwy 3-21, 10R-28L	GND CON 121.9 348.6	CLNC DEL 120.125 318.1
-----------------------------	---	--	-------------------------------	----------------------------------



RADAR REQUIRED



CATEGORY	A	B	C	D	E
S-28L*	600/24 577 (600-½)		600/50 577 (600-1)	600/60 577 (600-¼)	600-1½ 577 (600-½)
CIRCLING**	720-1 689 (700-1)	740-1 709 (800-1)	760-2 729 (800-2)	1000-3 969 (1000-3)	1160-3 1129 (1200-3)

PORTLAND, OREGON
Amdt 1 18OCT12

45°35'N-122°36'W

PORTLAND INTL (KPDX)

TACAN RWY 28L

NW-1, 03 JAN 2019 to 31 JAN 2019

NW-1, 03 JAN 2019 to 31 JAN 2019