

# WHAMY FOUR DEPARTURE (RNAV)

AL-330 (FAA)

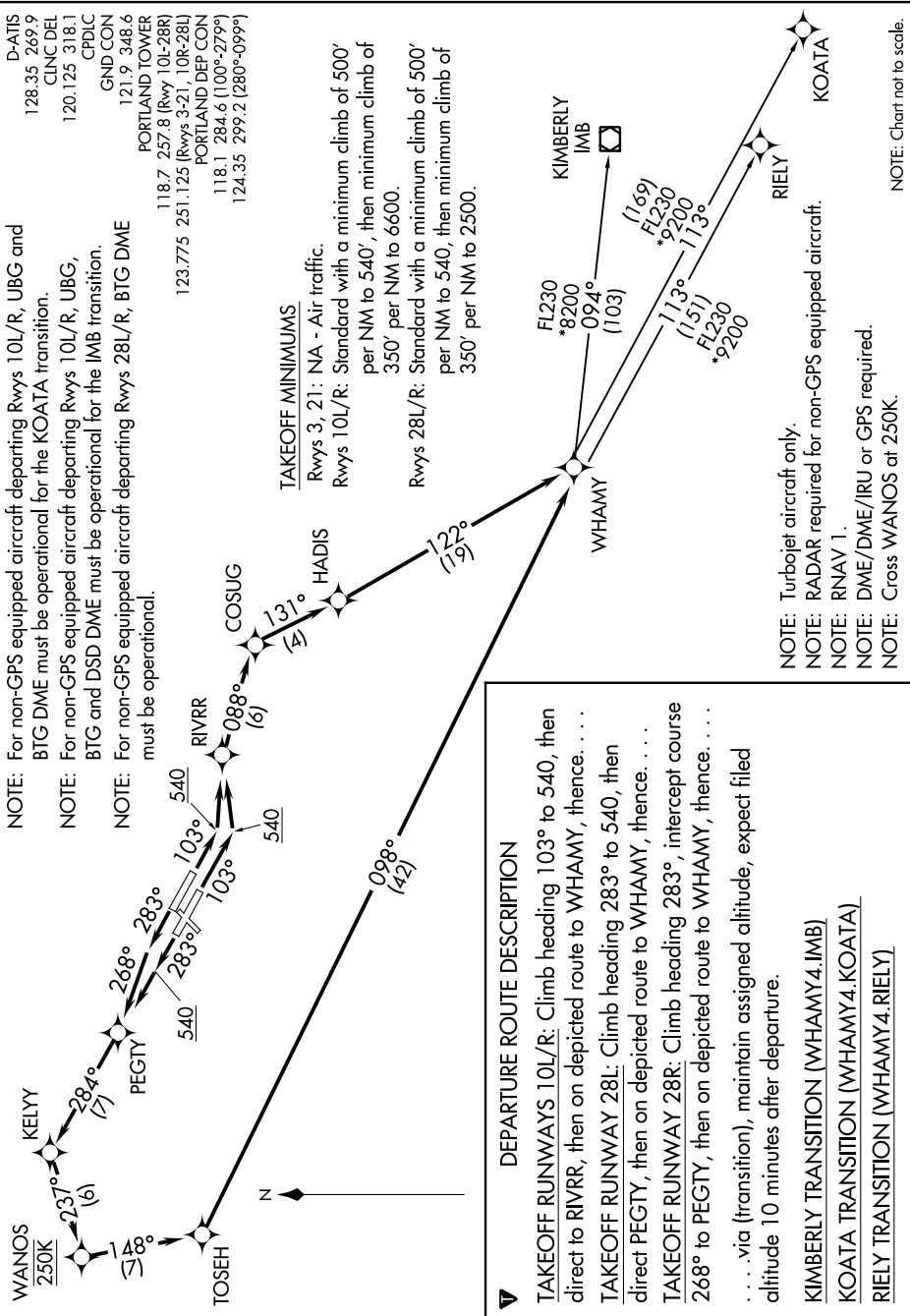
614111 13 01 614111 JAN 2019 03 '1-MIN

D-AITIS  
128.35 269.9  
CINC DEL  
120.125 318.1  
CPDC  
GND/CON  
121.9 348.6  
PORTLAND TOWER  
118.7 257.8 (Rwy 10L-28R)  
123.775 251.125 (Rwys 3-21, 10R-28L)  
PORTLAND/DEP CON  
118.1 284.6 (100°-279°)  
124.35 299.2 (280°-099°)

NOTE: For non-GPS equipped aircraft departing Rwys 10L/R, UBG and BTG DME must be operational for the KOATA transition.  
NOTE: For non-GPS equipped aircraft departing Rwys 10L/R, UBG, BTG and DSD DME must be operational for the IMB transition.  
NOTE: For non-GPS equipped aircraft departing Rwys 28L/R, BTG DME must be operational.

### TAKEOFF MINIMUMS

Rwys 3, 21: NA - Air traffic.  
Rwys 10L/R: Standard with a minimum climb of 500' per NM to 540', then minimum climb of 350' per NM to 6600.  
Rwys 28L/R: Standard with a minimum climb of 500' per NM to 540', then minimum climb of 350' per NM to 2500.



### DEPARTURE ROUTE DESCRIPTION

TAKEOFF RUNWAYS 10L/R: Climb heading 103° to 540, then direct to RIVRR, then on depicted route to WHAMY, thence. . . .  
TAKEOFF RUNWAY 28L: Climb heading 283° to 540, then direct PEGTY, then on depicted route to WHAMY, thence. . . .  
TAKEOFF RUNWAY 28R: Climb heading 283°, intercept course 268° to PEGTY, then on depicted route to WHAMY, thence. . . .  
. . . via (transition), maintain assigned altitude, expect filed altitude 10 minutes after departure.

- KIMBERLY TRANSITION (WHAMY4.IMB)
- KOATA TRANSITION (WHAMY4.KOATA)
- RIELY TRANSITION (WHAMY4.RIELY)

NOTE: Turbojet aircraft only.  
NOTE: RADAR required for non-GPS equipped aircraft.  
NOTE: RNAV 1.  
NOTE: DME/DME/IRU or GPS required.  
NOTE: Cross WANOS at 250K.

NOTE: Chart not to scale.