

NUMMY TWO ARRIVAL

WASHINGTON, DC

NE-3, 03 JAN 2019 to 31 JAN 2019

ARRIVAL ROUTE DESCRIPTION

BUCKO TRANSITION (BUCKO.NUMMY2): From over BUCKO on ESL R-282 to ESL VOR/DME, then on ESL R-103 to DRUZZ, then on AML R-297 to AML VOR/DME.

Landing DCA Rwy 1, 4, 33, ADW Rwys 1L, 1R, and DAA: From over AML VOR/DME on AML R-130 to cross NUMMY/AML 17 DME at 6000, then on heading 187°, expect radar vectors to final approach course.

Landing DCA Rwys 15, 19, 22 and ADW Rwys 19L, 19R: Depart AML VOR/DME on heading 070°, expect radar vectors to final approach course.

POTOMAC APP CON
118.675 323.175
RONALD REAGAN
WASHINGTON NATIONAL
D-ATIS 132.65
JOINT BASE ANDREWS D-ATIS
133.675 251.05
DAVISON AAF ATIS
128.175

MORGANTOWN
111.6 MGW
Chan 53

KESSEL
110.8 ESL
Chan 45
FL230
N39°13.53'-W78°59.37'

MARTINSBURG
112.1 MRB
Chan 58

BUCKO
N39°17.63'
W79°49.50'
H-10-12
FL310

HONINR
N39°14.78'
W79°14.15'
FL260

ELKINS
114.2 EKN
Chan 89

ARMEL
113.5 AML
Chan 82
N38°56.08'-W77°28.00'

WEWIL
N39°06.10'
W78°06.86'
14000

SEPII
N39°00.55'
W77°45.23'
11000

NUMMY
N38°47.03'
W77°09.57'
6000

FORGT
N39°02.12'
W77°51.32'

NEWR
N39°04.22'
W77°59.50'
12000

DRUZZ
N39°09.80'
W78°21.48'
15000

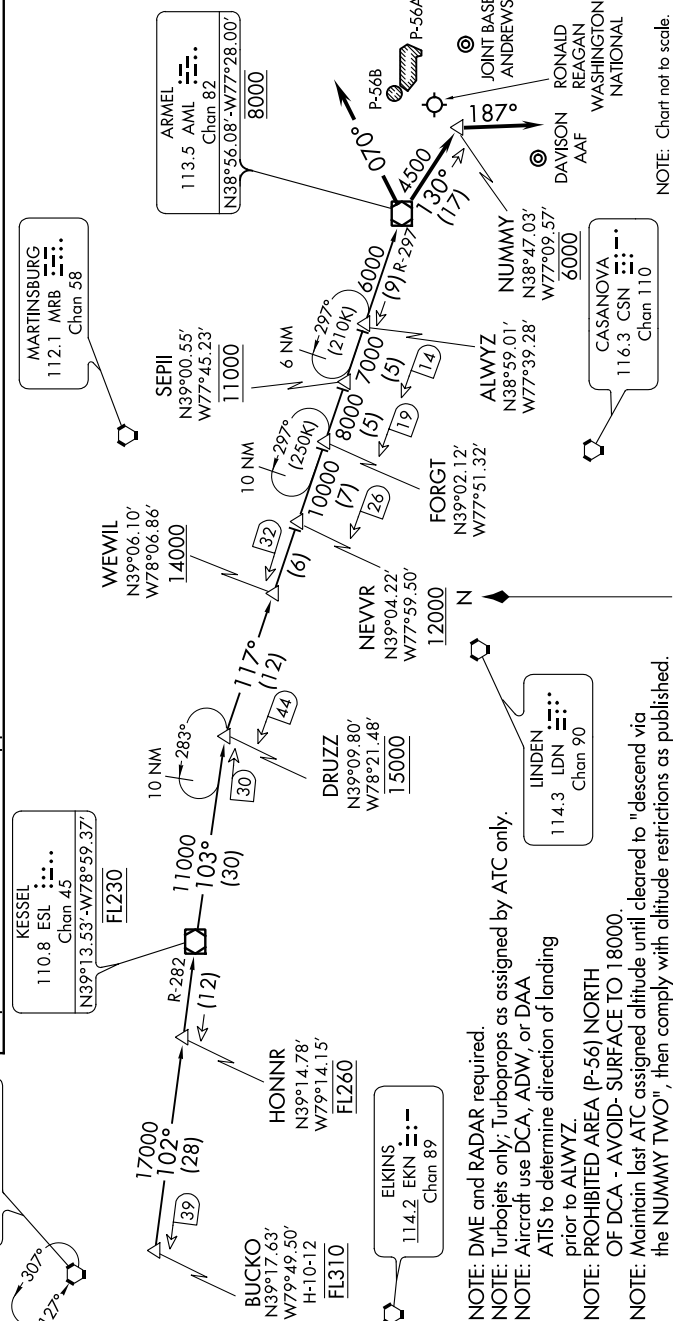
LINDEN
114.3 LDN
Chan 90

ALWYZ
N38°59.01'
W77°39.28'

DAVISON
N38°47.03'
W77°09.57'
6000

DAVISON AAF
RONALD REAGAN
WASHINGTON NATIONAL

NOTE: DME and RADAR required.
NOTE: Turbogets only; Turbogaps as assigned by ATC only.
NOTE: Aircraft use DCA, ADW, or DAA ATIS to determine direction of landing prior to ALWYZ.
NOTE: PROHIBITED AREA (P-56) NORTH OF DCA - AVOID- SURFACE TO 18000.
NOTE: Maintain last ATC assigned altitude until cleared to "descend via the NUMMY TWO", then comply with altitude restrictions as published.



NOTE: Chart not to scale.

NUMMY TWO ARRIVAL

WASHINGTON, DC

NE-3, 03 JAN 2019 to 31 JAN 2019