

CAMP SPRINGS, MARYLAND

ILS RWY 19R (CAT II)

LOC I-MXK 111.5	APCH CRS 190°	Rwy ldg TDZE 274 Arprt Elev 280
---------------------------	-------------------------	--

AL-561 [USAF]

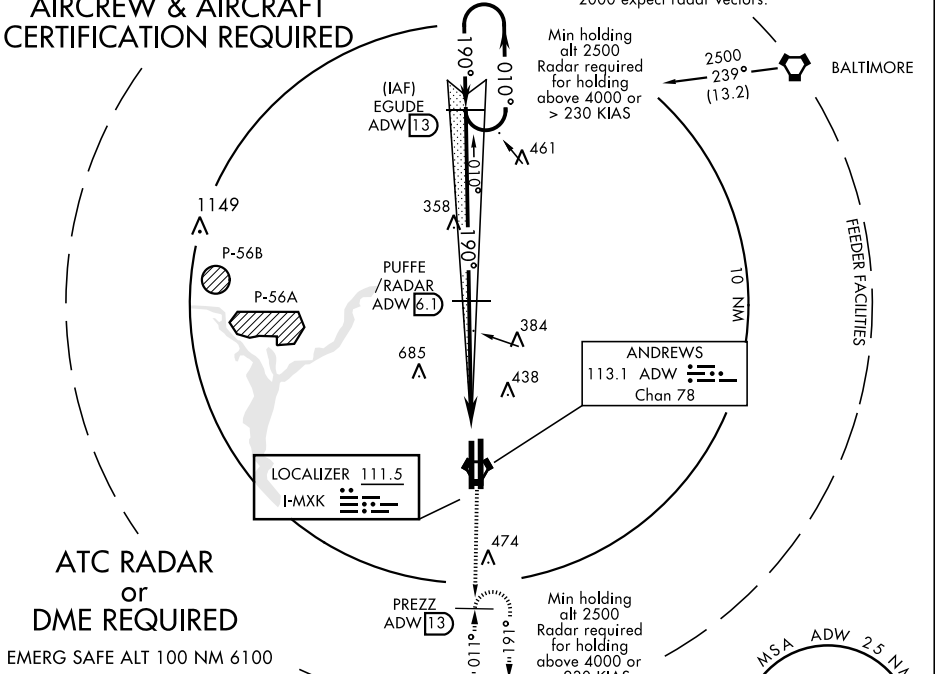
JOINT BASE ANDREWS (KADW)

		† MISSED APPROACH: Climbing to 2500, intercept ADW VORTAC R-191 to PREZZ and hold.		
--	--	--	--	--

ATIS 133.675 251.05	POTOMAC APP CON 128.0 335.5	ANDREWS TOWER 118.4 349.0	GND CON 121.8 275.8	CLNC DEL 127.55 285.475	CPDLC
-------------------------------	---------------------------------------	-------------------------------------	-------------------------------	-----------------------------------	-------

CATEGORY II ILS-SPECIAL AIRCREW & AIRCRAFT CERTIFICATION REQUIRED

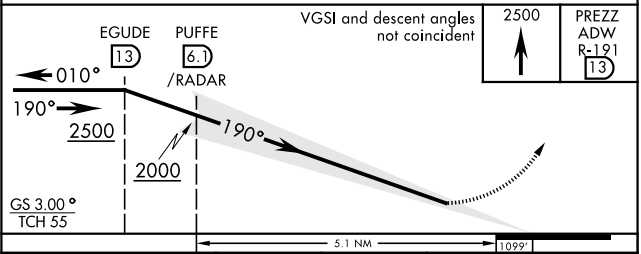
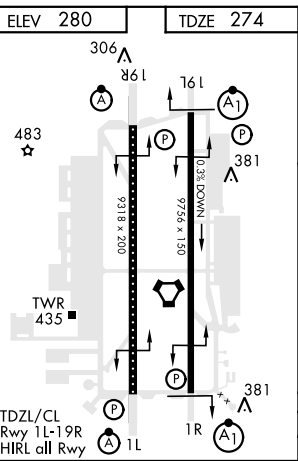
† For aircraft not equipped with TACAN or suitable RNAV system with GPS: Fly hdg 190°, maintain 2000 expect radar vectors.



NE-3, 03 JAN 2019 to 31 JAN 2019

NE-3, 03 JAN 2019 to 31 JAN 2019

EMERG SAFE ALT 100 NM 6100



CATEGORY	A	B	C	D	E
S-ILS 19R	RA 99/12		100	DA 374	

CAMP SPRINGS, MARYLAND

38°49'N-76°52'W

JOINT BASE ANDREWS (KADW)

Amdt 2 01FEB18

ILS RWY 19R (CAT II)