

ILS RWY 19R (CAT III)

LOC I-MXK 111.5	APCH CRS 190°	Rwy ldg TDZE 274 Arprt Elev 280	9318
---------------------------	-------------------------	--	-------------

AL-561 [USAF]

JOINT BASE ANDREWS (KADW)

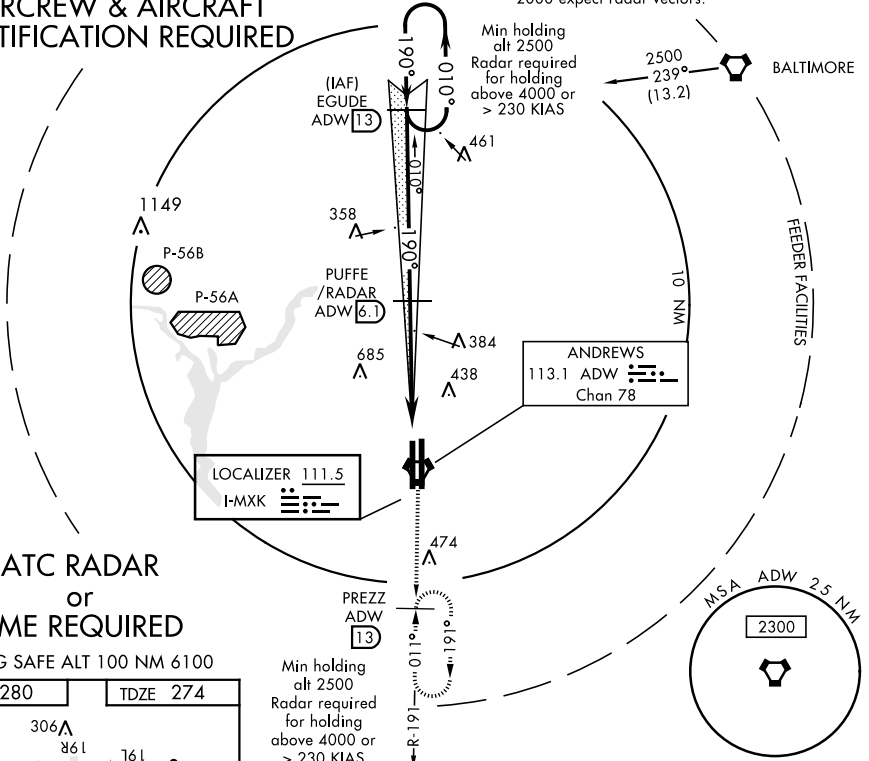
ATIS 133.675 251.05		POTOMAC APP CON 128.0 335.5		ANDREWS TOWER 118.4 349.0		GND CON 121.8 275.8		CLNC DEL 127.55 285.475		CPDLC
-------------------------------	--	---------------------------------------	--	-------------------------------------	--	-------------------------------	--	-----------------------------------	--	-------



† MISSED APPROACH: Climbing to 2500, intercept ADW VORTAC R-191 to PREZZ and hold.

CATEGORY III ILS-SPECIAL AIRCREW & AIRCRAFT CERTIFICATION REQUIRED

† For aircraft not equipped with TACAN or suitable RNAV system with GPS: Fly hdg 190°, maintain 2000 expect radar vectors.

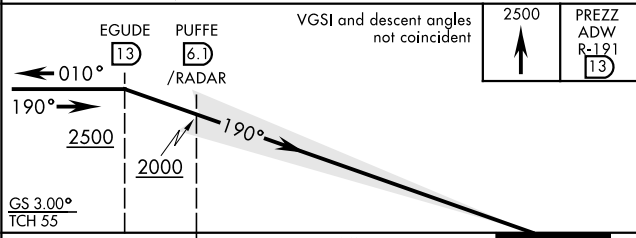
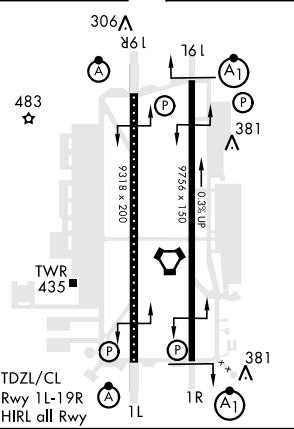


NE-3, 03 JAN 2019 to 31 JAN 2019

NE-3, 03 JAN 2019 to 31 JAN 2019

ATC RADAR or DME REQUIRED
EMERG SAFE ALT 100 NM 6100

ELEV 280	TDZE 274
----------	----------



CATEGORY	A	B	C	D	E
S-ILS 19R		CAT IIIa	RVR 07		
S-ILS 19R		CAT IIIb	N/A		
S-ILS 19R		CAT IIIc	N/A		

ILS RWY 19R (CAT III)