

CAMP SPRINGS, MARYLAND

ILS RWY 1L (CAT II)

LOC I-RWS 111.5	APCH CRS 010°	Rwy ldg TDZE 261 Arpt Elev 280
---------------------------	-------------------------	--

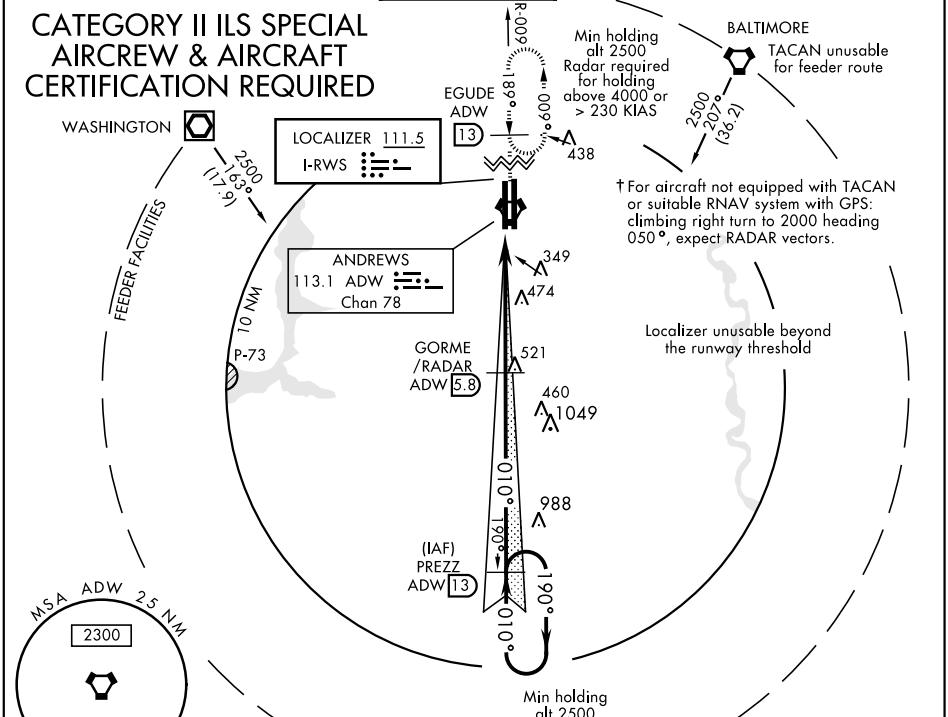
AL-561 [USAF]

JOINT BASE ANDREWS (KADW)

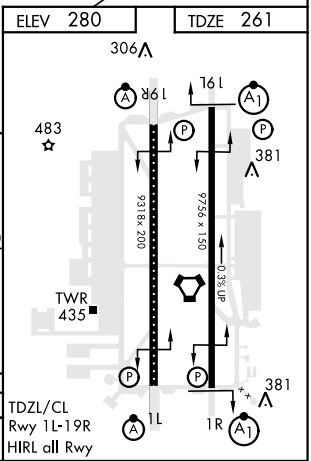
		† MISSED APPROACH: Climbing to 2500, intercept ADW VORTAC R-009 to EGUDE and hold.		
--	--	--	--	--

ATIS 133.675 251.05	POTOMAC APP CON 128.0 335.5	ANDREWS TOWER 118.4 349.0	GND CON 121.8 275.8	CLNC DEL 127.55 285.475	CPDLC
-------------------------------	---------------------------------------	-------------------------------------	-------------------------------	-----------------------------------	-------

CATEGORY II ILS SPECIAL AIRCREW & AIRCRAFT CERTIFICATION REQUIRED

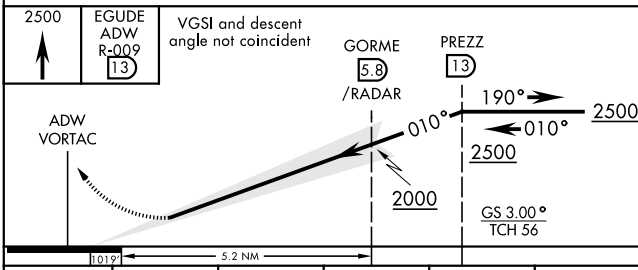


† For aircraft not equipped with TACAN or suitable RNAV system with GPS: climbing right turn to 2000 heading 050°, expect RADAR vectors.



ATC RADAR or DME REQUIRED

EMERG SAFE ALT 100 NM 6100



CATEGORY	A	B	C	D	E
S-ILS 1L	RA 102/12		100	DA 355	

CAMP SPRINGS, MARYLAND

38°49'N-76°52'W

JOINT BASE ANDREWS (KADW)

Amtd 3 01FEB18

ILS RWY 1L (CAT II)

NE-3, 03 JAN 2019 to 31 JAN 2019

NE-3, 03 JAN 2019 to 31 JAN 2019