

CAMP SPRINGS, MARYLAND

# ILS RWY 1L (CAT III)

LOC I-RWS <b>111.5</b>	APCH CRS <b>010°</b>	Rwy Idg TDZE Arpt Elev <b>9318</b> <b>261</b> <b>280</b>
---------------------------	-------------------------	---

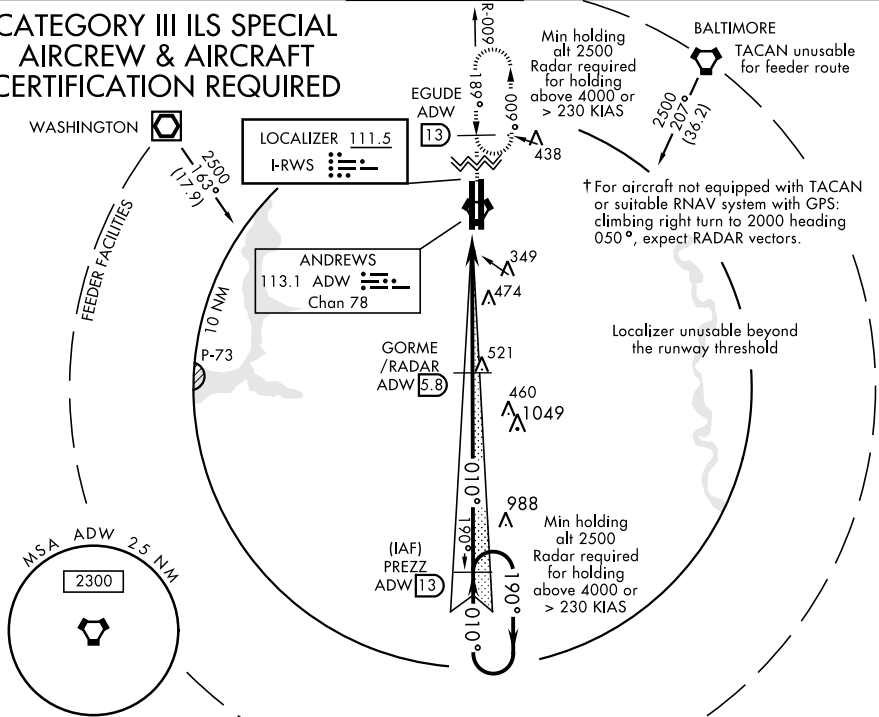
AL-561 [USAF]

JOINT BASE ANDREWS (KADW)

		† MISSED APPROACH: Climbing to 2500, intercept ADW VORTAC R-009 to EGUDE and hold.		
--	--	--	--	--

ATIS <b>133.675 251.05</b>	POTOMAC APP CON <b>128.0 335.5</b>	ANDREWS TOWER <b>118.4 349.0</b>	GND CON <b>121.8 275.8</b>	CLNC DEL <b>127.55 285.475</b>	CPDLC
-------------------------------	---------------------------------------	-------------------------------------	-------------------------------	-----------------------------------	-------

## CATEGORY III ILS SPECIAL AIRCREW & AIRCRAFT CERTIFICATION REQUIRED



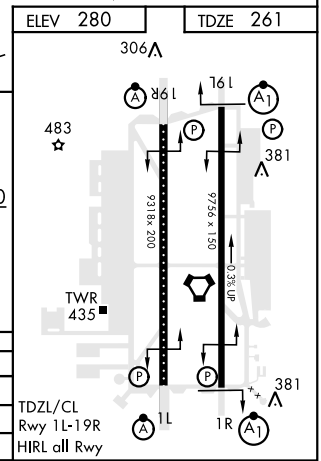
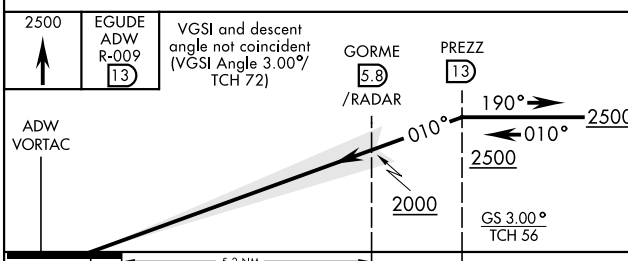
† For aircraft not equipped with TACAN or suitable RNAV system with GPS: climbing right turn to 2000 heading 050°, expect RADAR vectors.

NE-3, 03 JAN 2019 to 31 JAN 2019

NE-3, 03 JAN 2019 to 31 JAN 2019

## ATC RADAR or DME REQUIRED

EMERG SAFE ALT 100 NM 6100



CATEGORY	A	B	C	D	E
S-ILS 1L		S-ILS 1L CAT IIIa	RVR 07		
S-ILS 1L		S-ILS 1L CAT IIIb	N/A		
S-ILS 1L		S-ILS 1L CAT IIIc	N/A		

TDZL/CL Rwy 1L-19R  
HIRL all Rwy

CAMP SPRINGS, MARYLAND

38°49'N-76°52'W

JOINT BASE ANDREWS (KADW)

Orig 06DEC18

# ILS RWY 1L (CAT III)