

CAMP SPRINGS, MARYLAND

ILS or LOC RWY 19L

LOC I-GQZ 110.5	APCH CRS 190°	Rwy ldg TDZE Arprt Elev	9756 279 280
---------------------------	-------------------------	-------------------------------	---

AL-561 (USAF)

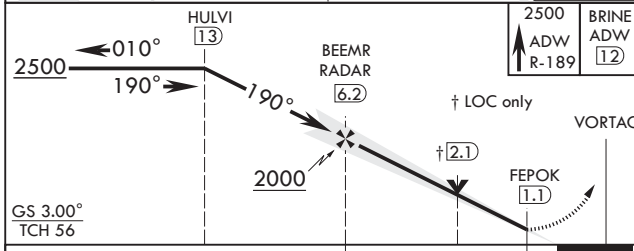
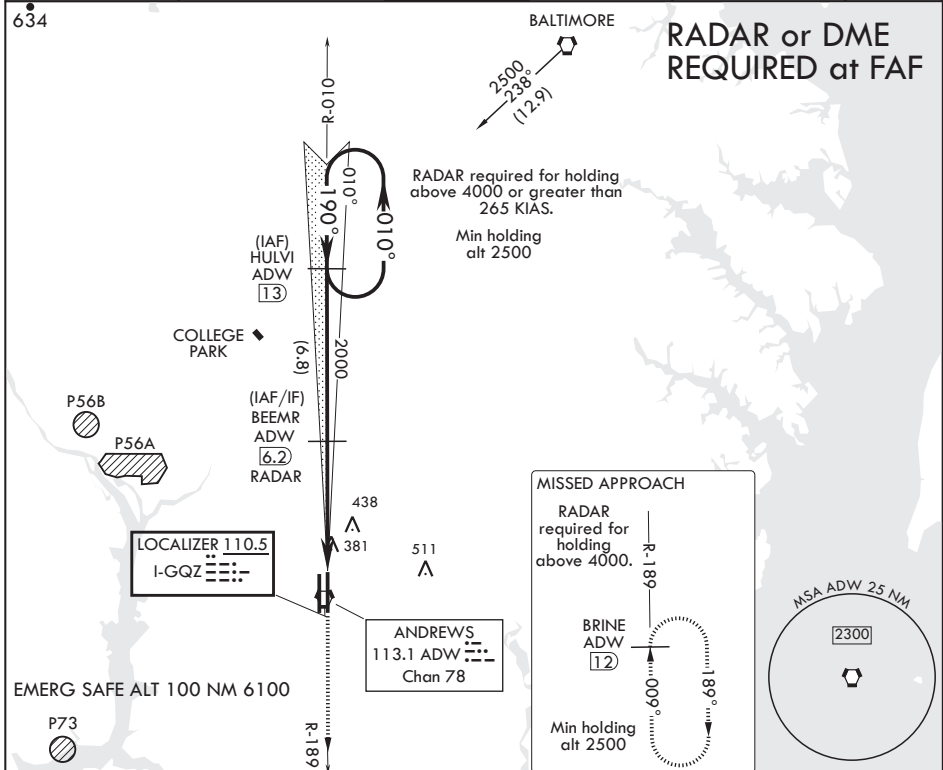
JOINT BASE ANDREWS (KADW)

▼ *When ALS inop, increase CAT AB RVR to 55, vis to 1 mile, CAT CDE RVR to 60, vis to 1 1/8 miles.
** Circling not authorized W of Rwy 1L-19R.

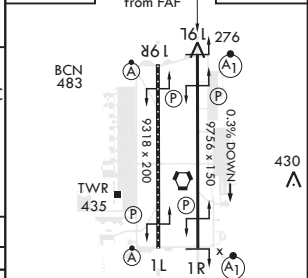


MISSED APPROACH: Climb to 2500 via ADW R-189 to BRINE/ADW 12 DME and hold.

ATIS 133.675 251.05	POTOMAC APP CON 128.0 335.5	TOWER 118.4 349.0	GND CON 121.8 275.8	CLNC DEL 127.55 285.475	CPDLC
-------------------------------	---------------------------------------	-----------------------------	-------------------------------	-----------------------------------	-------



ELEV 280	190° 5.2NM from FAF	TDZE 279
----------	---------------------	----------



CATEGORY	A	B	C	D	E
S-ILS 19L		529/40	250	(300-3/4)	
S-LOC 19L*		680/40	401	(500-3/4)	
C CIRCLING**	780-1 501 (600-1)		780-1 1/2 501 (600-1 1/2)	840-2 561 (600-2)	

HIRL all Rwys
TDZL/CL Rwys 1L, 19R

FAF to MAP 5.1 NM					
Knots	60	90	120	150	180
Min:Sec	5:06	3:24	2:33	2:02	1:42

CAMP SPRINGS, MARYLAND

38°49'N - 76°52'W

JOINT BASE ANDREWS (KADW)

Amdt 6 17AUG17

ILS or LOC RWY 19L

NE-3, 03 JAN 2019 to 31 JAN 2019

NE-3, 03 JAN 2019 to 31 JAN 2019