

CAMP SPRINGS, MARYLAND

ILS or LOC RWY 19R

LOC I-MXK 111.5	APCH CRS 190°	Rwy Idg TDZE Arprt Elev 9318 274 280
---------------------------	-------------------------	--

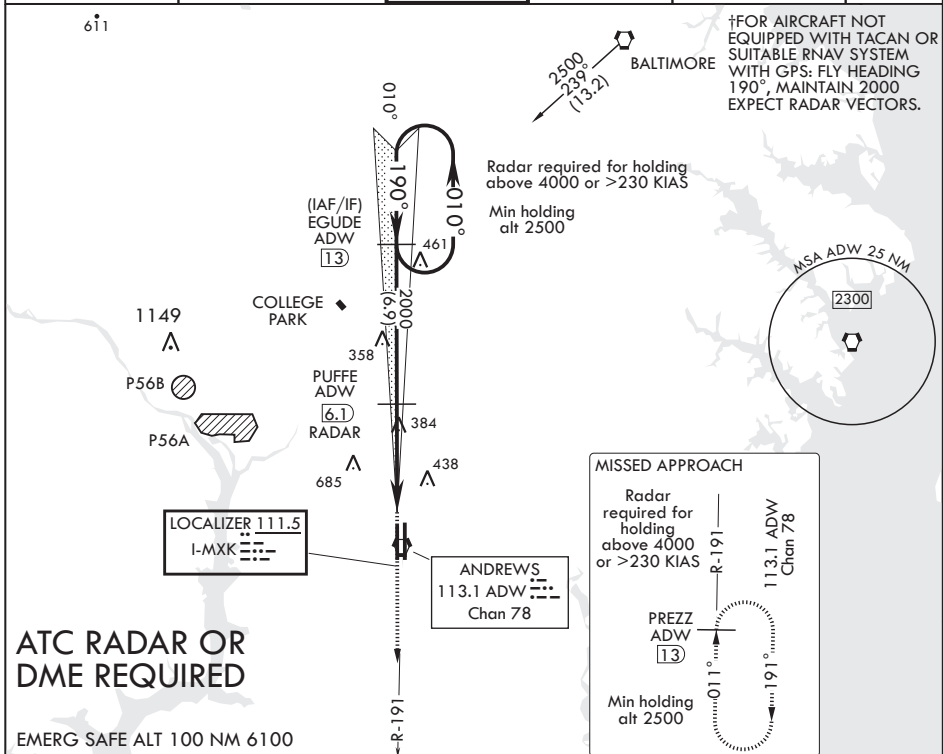
AL-561 (USAF)

JOINT BASE ANDREWS (KADW)

* When ALS inop, increase RVR to 40 and vis to 3/4 mile. When TDZL/CL inop, increase RVR to 24.
 ** When ALS inop, increase CAT AB RVR to 55 and vis to 1 mile, CAT CDE RVR to 60 and vis to 1 1/8 miles.
 *** Circling NA West of Rwy 1L-19R.

† MISSED APPROACH: Climb to 2500, intercept ADW VORTAC R-191 to PREZZ and hold.

ATIS 133.675 251.05	POTOMAC APP CON 128.0 335.5	TOWER 118.4 349.0	GND CON 121.8 275.8	CLNC DEL 127.55 285.475	CPDLC
-------------------------------	---------------------------------------	-----------------------------	-------------------------------	-----------------------------------	-------



NE-3, 03 JAN 2019 to 31 JAN 2019

NE-3, 03 JAN 2019 to 31 JAN 2019

ATC RADAR OR DME REQUIRED

EMERG SAFE ALT 100 NM 6100

EGUDE (13)		VGSI and descent angles not coincident		2500 ADW R-191	PREZZ ADW (13)	ELEV 280	TDZE 274
2500 ← 010°		190° →		‡ LOC only		190° 5.1NM from FAF	
2000		Puffe (6.1) RADAR		VORTAC		761	
GS 3.00°		4.6 NM		BARLE (1.5)		861	
TCH 55		.5		VORTAC		9318 * 200	
CATEGORY	A	B	C	D	E	TWR 435	
S-ILS 19R*	474/18		200	(200-1/2)		0.3% DOWN	
S-LOC 19R**	660/24	386 (400-1/2)	660/35	386	(400-5/8)		1R1 x (A1)
CIRCLING***	780-1	500 (500-1)	780-1/2	500 (500-1/2)	840-2	560 (600-2)	1R1 x (A1)
HIRL all Rwys							
TDZL/CL Rwys 1L, 19R							
FAF to MAP 4.6 NM							
Knots		60	90	120	150	180	
Min:Sec		4:36	3:04	2:18	1:50	1:32	

CAMP SPRINGS, MARYLAND

38°49'N - 76°52'W

JOINT BASE ANDREWS (KADW)

Amdt 2 01FEB18

ILS or LOC RWY 19R