

CAMP SPRINGS, MARYLAND

ILS or LOC RWY 1L

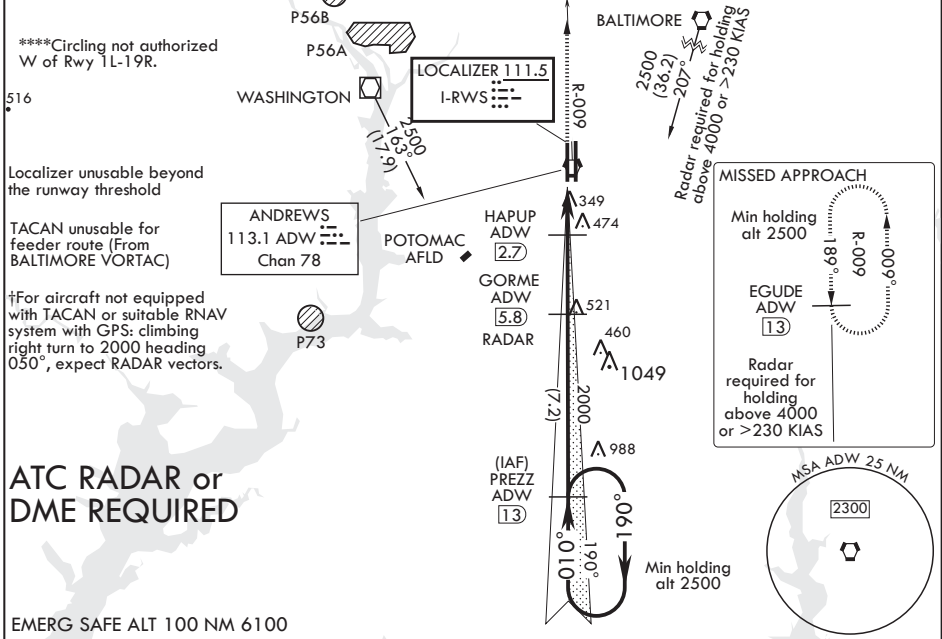
LOC I-RWS 111.5	APCH CRS 010°	Rwy Idg 9318
		TDZE 261
		Arprt Elev 280

AL-561 (USAF)

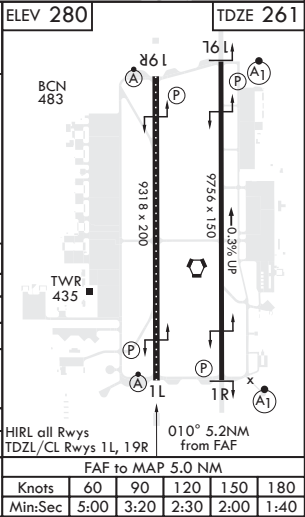
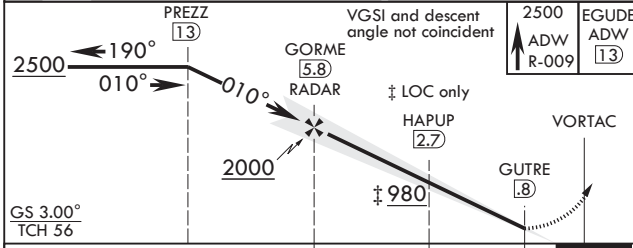
JOINT BASE ANDREWS (KADW)

† *When ALS inop increase RVR to 40 and vis to 3/4 mile. When TDZL/CL inop, increase RVR to 24. ** When ALS inop, increase RVR to 55 and vis to 1 mile. *** When ALS inop, increase CAT AB RVR to 55 and vis to 1 mile, CAT CDE vis to 1 1/4 miles.	ALSF-2	† MISSED APPROACH: Climbing to 2500, intercept ADW VORTAC R-009 to EGUDE and hold.

ATIS 133.675 251.05	POTOMAC APP CON 128.0 335.5	TOWER 118.4 349.0	GND CON 121.8 275.8	CLNC DEL 127.55 285.475	CPDLC
-------------------------------	---------------------------------------	-----------------------------	-------------------------------	-----------------------------------	-------



EMERG SAFE ALT 100 NM 6100



CATEGORY	A	B	C	D	E
S-ILS 1L*	461/18		200	(200-1/2)	
S-LOC 1L**	640/24	379 (400-1/2)	640/35	379	(400-5/8)
C CIRCLING****	780-1	500 (500-1)	780-1 1/2 500 (500-1 1/2)	840-2	560 (600-2)
NON-DME					
S-LOC 1L***	700/24	439 (500-1/2)	700/40	439	(500-3/4)
C CIRCLING****	780-1	500 (500-1)	780-1 1/2 500 (500-1 1/2)	840-2	560 (600-2)

FAF to MAP 5.0 NM					
Knots	60	90	120	150	180
Min:Sec	5:00	3:20	2:30	2:00	1:40

CAMP SPRINGS, MARYLAND

38°49'N - 76°52'W

JOINT BASE ANDREWS (KADW)

Amdt 3 01FEB18

ILS or LOC RWY 1L

NE-3, 03 JAN 2019 to 31 JAN 2019

NE-3, 03 JAN 2019 to 31 JAN 2019