

CAMP SPRINGS, MARYLAND

ILS or LOC RWY 1R

LOC I-VJM 110.5	APCH CRS 010°	Rwy Idg 9756
		TDZE 265
		Arprt Elev 280

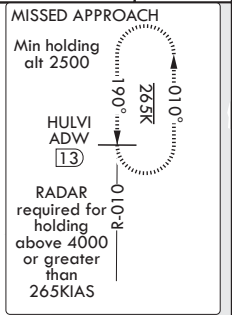
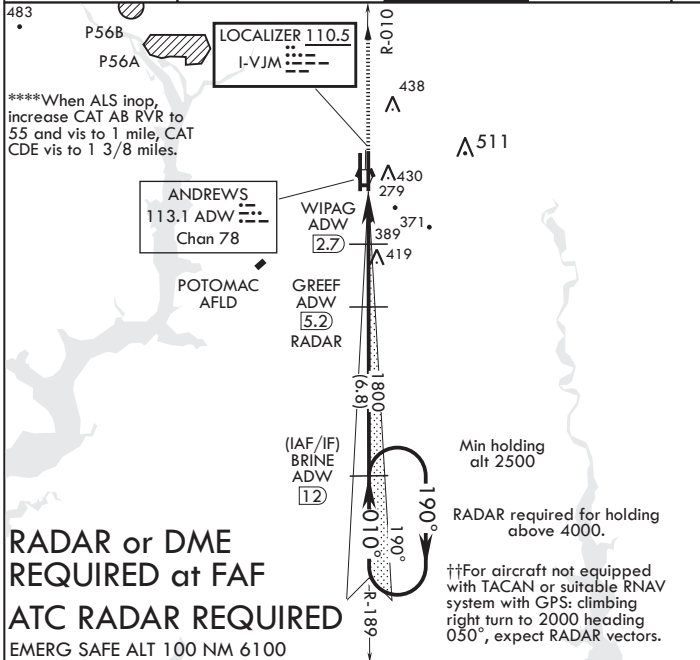
AL-561 (USAF)

JOINT BASE ANDREWS (KADW)

▽ * When ALS inop, increase RVR to 40, vis to 3/4 mile. RVR 18 authorized with use of Flight Director System or Autopilot System or Heads-Up-Display to DA.
 ** When ALS inop, increase RVR to 55, vis to 1 mile.
 *** Circling not authorized W of Rwy 01L-19R.

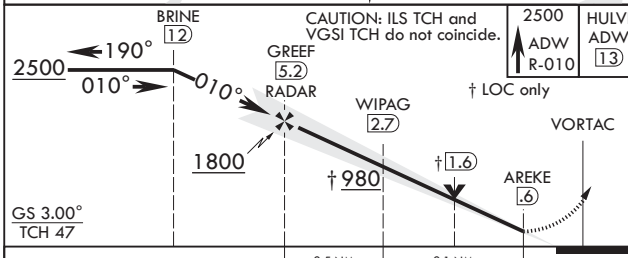
⚡ MISSED APPROACH: Climb to 2500 via ADW VORTAC R-010 to HULVI/ADW 13 DME and hold.

ATIS 133.675 251.05	POTOMAC APP CON 128.0 335.5	TOWER 118.4 349.0	GND CON 121.8 275.8	CLNC DEL 127.55 285.475	CPDLC
-------------------------------	---------------------------------------	-----------------------------	-------------------------------	-----------------------------------	-------



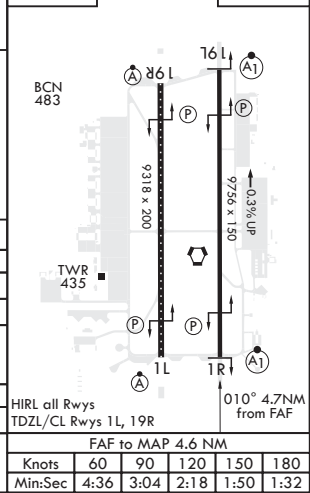
RADAR or DME REQUIRED at FAF
ATC RADAR REQUIRED
 EMERG SAFE ALT 100 NM 6100

††For aircraft not equipped with TACAN or suitable RNAV system with GPS: climbing right turn to 2000 heading 050°, expect RADAR vectors.



ELEV 280	TDZE 265
----------	----------

CATEGORY	A	B	C	D	E
S-ILS 1R*	465/24		200	(200-1/2)	
S-LOC 1R**	640/24	375 (400-1/2)	640/35	375	(400-5/8)
CIRCLING***	780-1	501 (600-1)	780-1 1/2 501 (600-1 1/2)	840-2	561 (600-2)
NON-DME					
S-LOC 1R****	720/24	455 (500-1/2)	720/45	455	(500-7/8)
CIRCLING***	780-1	501 (600-1)	780-1 1/2 501 (600-1 1/2)	840-2	561 (600-2)



CAMP SPRINGS, MARYLAND

38°49'N - 76°52'W

JOINT BASE ANDREWS (KADW)

Amdt 7 17AUG17

ILS or LOC RWY 1R

NE-3, 03 JAN 2019 to 31 JAN 2019

NE-3, 03 JAN 2019 to 31 JAN 2019