

JEFSN ONE DEPARTURE (RNAV) (JEFSN1 • JEFSN)

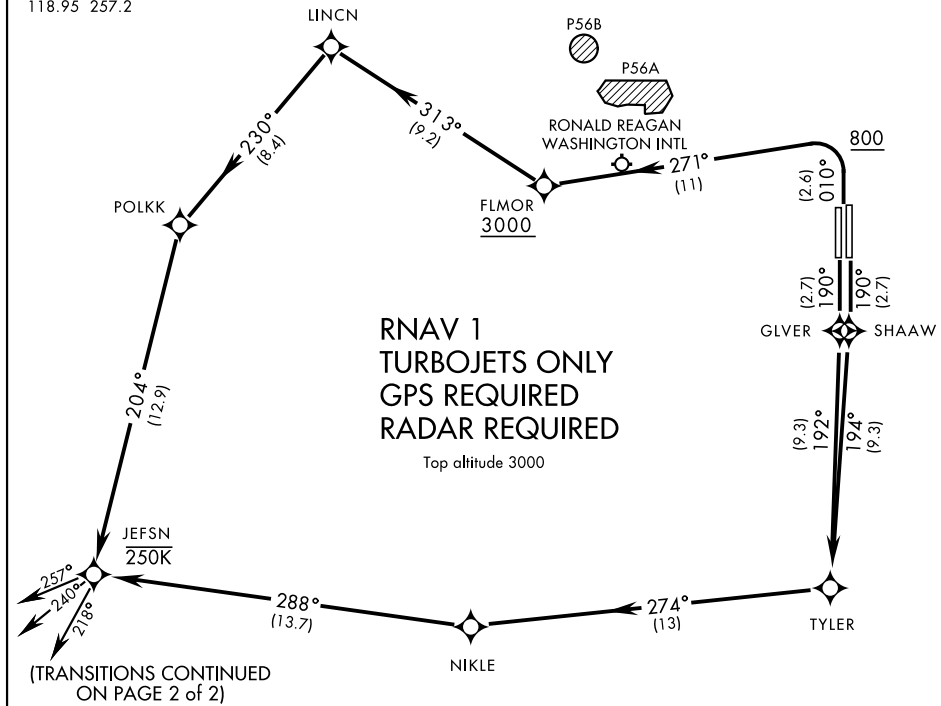
JOINT BASE ANDREWS (KADW)

CAMP SPRINGS, MARYLAND

ATIS 133.675 251.05
 CPDLC
 GND CON
 121.8 275.8
 ANDREWS TOWER
 118.4 349.0
 POTOMAC TRACON DEP CON
 118.95 257.2

SL-561 [USAF]
 (PAGE 1 of 2)

Max speed 250KIAS until JEFSN.
 Prohibited (P56) 1.5NM north
 of DCA avoid surface to FL180.
 Top altitude 3000



NE-3, 03 JAN 2019 to 31 JAN 2019

NE-3, 03 JAN 2019 to 31 JAN 2019



DEPARTURE ROUTE DESCRIPTION

TAKE-OFF RWY 1L/1R: Climb on heading 010° to 800, then climbing left turn to 3000 direct FLMOR. Then via depicted route to JEFSN, thence...

TAKE-OFF RWY 19L: Climb on heading 190° direct SHAAW then via depicted route to JEFSN, thence...

TAKE-OFF RWY 19R: Climb on heading 190° direct GLVER then via depicted route to JEFSN, thence...

... on assigned transition. Maintain 3000, expect further clearance to filed alt within ten (10) minutes after departure.

- FLASK TRANSITION (JEFSN1 • FLASK)
- GREENSBORO TRANSITION (JEFSN1 • GSO)
- LYNCHBURG TRANSITION (JEFSN1 • LYH)
- MAULS TRANSITION (JEFSN1 • MAULS)
- SOUTH BOSTON TRANSITION (JEFSN1 • SBV)

JEFSN ONE DEPARTURE (RNAV) (JEFSN1 • JEFSN)

Amdt 2 17AUG17

CAMP SPRINGS, MARYLAND

JOINT BASE ANDREWS (KADW)