

LINCN ONE DEPARTURE (RNAV) (LINCN1 • LINCN)

JOINT BASE ANDREWS (KADW)
CAMP SPRINGS, MARYLAND

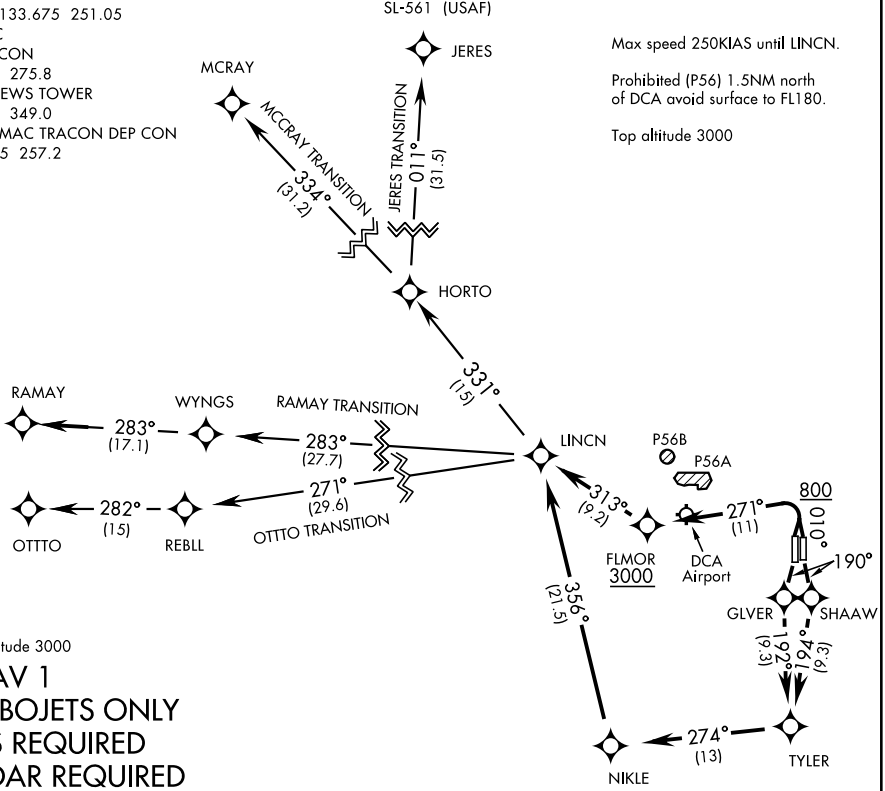
ATIS 133.675 251.05
CPDLC
GND CON
121.8 275.8
ANDREWS TOWER
118.4 349.0
POTOMAC TRACON DEP CON
118.95 257.2

SL-561 (USAF)

Max speed 250KIAS until LINCN.

Prohibited (P56) 1.5NM north of DCA avoid surface to FL180.

Top altitude 3000



Top altitude 3000

**RNAV 1
TURBOJET ONLY
GPS REQUIRED
RADAR REQUIRED**

DEPARTURE ROUTE DESCRIPTION

RWY 01L/R: Climb heading 010° to 800, then climbing left turn to 3000 direct FLMOR. Then via depicted route to LINCN, thence...

RWY 19L: Climb heading 190° direct SHAAW then via depicted route to LINCN, thence...

RWY 19R: Climb heading 190° direct GLVER then via depicted route to LINCN, thence...

...on assigned transition. Maintain 3000, expect further clearance to filed alt within ten (10) minutes after departure.

JERES TRANSITION (LINCN1.JERES)

MCCRAY TRANSITION (LINCN1.MCCRAY)

OTTO TRANSITION (LINCN1.OTTO)

RAMAY TRANSITION (LINCN1.RAMAY)

LINCN ONE DEPARTURE (RNAV) (LINCN1 • LINCN)

Amdt 1 17AUG17

CAMP SPRINGS, MARYLAND
JOINT BASE ANDREWS (KADW)

NE-3, 03 JAN 2019 to 31 JAN 2019

NE-3, 03 JAN 2019 to 31 JAN 2019