

CAMP SPRINGS, MARYLAND

# RNAV (GPS) RWY 19L

WAAS CH 52203 W19A	APCH CRS 190°	Rwy ldg TDZE Arprt Elev	9756 279 280
--------------------------	------------------	-------------------------------	--------------------

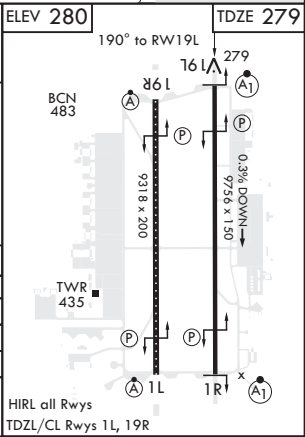
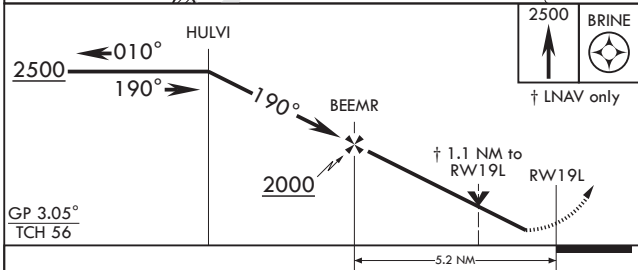
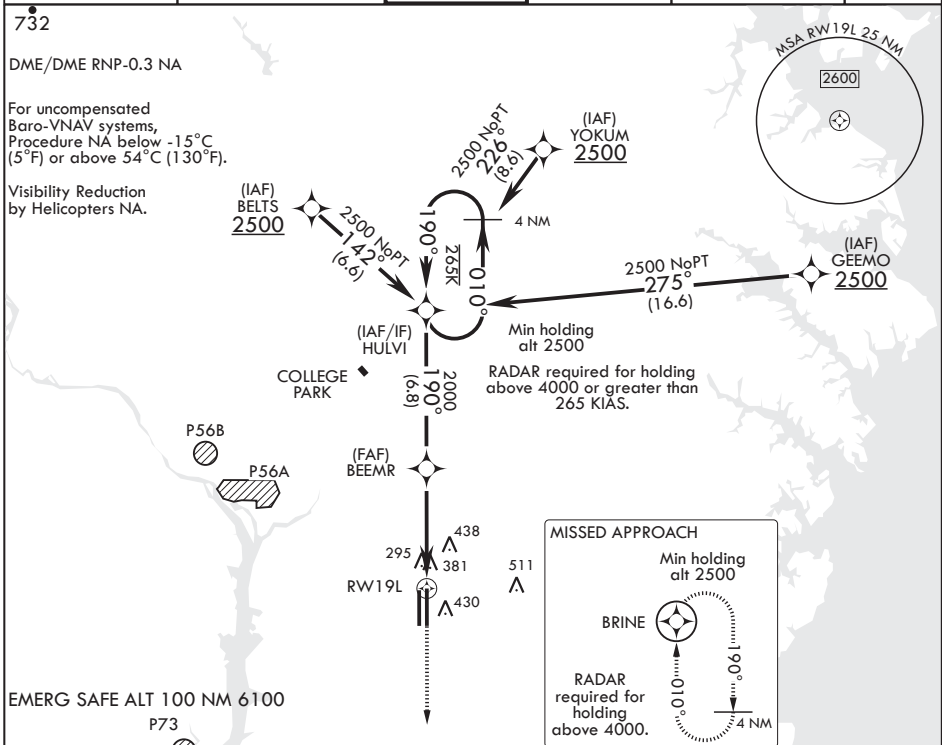
AL-561 (USAF)

JOINT BASE ANDREWS (KADW)

**V** \* When ALS inop, increase CAT ABCDE vis to 1 1/4 miles.  
 \*\* When ALS inop, increase CAT AB RVR to 55, vis to 1 mile; CAT CDE RVR to 60, vis to 1 1/8 miles.  
 \*\*\* Circling not authorized W of Rwy 1L-19R.

**ALSF-1** **MISSED APPROACH:** Climb to 2500 direct BRINE and hold.

ATIS 133.675 251.05	POTOMAC APP CON 128.0 335.5	TOWER 118.4 349.0	GND CON 121.8 275.8	CLNC DEL 127.55 285.475	CPDLC
------------------------	--------------------------------	----------------------	------------------------	----------------------------	-------



CATEGORY	A	B	C	D	E
LPV DA		529/40	250	(300-3/4)	
LNAV/VNAV DA*		673/40	394	(400-7/8)	
LNAV MDA**		680/40	401	(500-3/4)	
<b>C</b> CIRCLING***	780-1 501 (600-1)		780-1 1/2 501 (600-1 1/2)	840-2 561 (600-2)	

CAMP SPRINGS, MARYLAND

38°49'N - 76°52'W

JOINT BASE ANDREWS (KADW)

Amdt 1 20JUL17

# RNAV (GPS) RWY 19L

NE-3, 03 JAN 2019 to 31 JAN 2019

NE-3, 03 JAN 2019 to 31 JAN 2019