

CAMP SPRINGS, MARYLAND

RNAV (GPS) RWY 1L

WAAS CH 52205 W01A	APCH CRS 010°	Rwy ldg TDZE Arpt Elev	9318 261 280
--------------------------	------------------	------------------------------	--------------------

AL-561 (USAF)

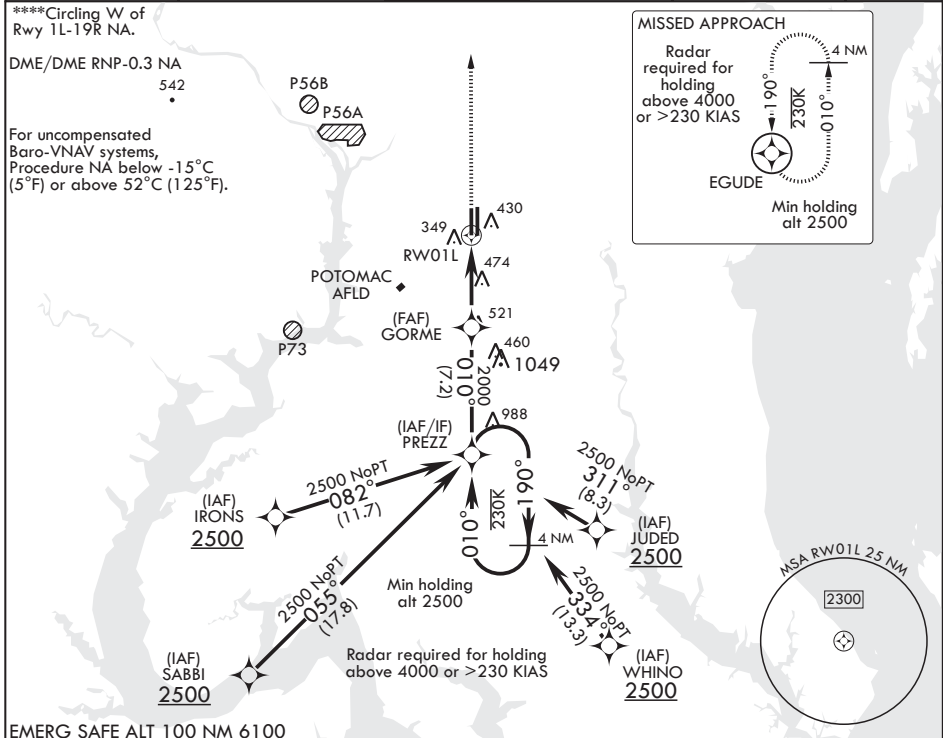
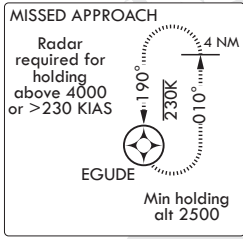
JOINT BASE ANDREWS (KADW)

* When ALS inop, increase CAT ABCDE RVR to 40, vis to 3/4 mile.
 ** When ALS inop increase CAT ABCDE vis to 1 1/4 miles.
 *** When ALS inop increase CAT AB RVR to 55, vis to 1 mile; CAT CDE vis to 1 1/4 miles.

ALSF-2 MISSED APPROACH: Climb to 2500 direct EGUDE and hold.

ATIS 133.675 251.05	POTOMAC APP CON 128.0 335.5	TOWER 118.4 349.0	GND CON 121.8 275.8	CLNC DEL 127.55 285.475	CPDLC
------------------------	--------------------------------	----------------------	------------------------	----------------------------	-------

****Circling W of Rwy 1L-19R NA.
 DME/DME RNP-0.3 NA 542
 For uncompensated Baro-VNAV systems, Procedure NA below -15°C (5°F) or above 52°C (125°F).



EMERG SAFE ALT 100 NM 6100

<p>2500 ← 190°</p> <p>010° →</p> <p>PREZZ</p> <p>2000</p> <p>GORME</p> <p>RWY 01L</p> <p>GP 3.05° TCH 56</p>	<p>VGSI and RNAV GP not coincident (VGSI Angle 3.00°/TCH 72).</p> <p>2500 EGUDE</p> <p>ELEV 280</p> <p>TDZE 261</p> <p>† LNAV only</p>																															
<table border="1"> <thead> <tr> <th>CATEGORY</th> <th>A</th> <th>B</th> <th>C</th> <th>D</th> <th>E</th> </tr> </thead> <tbody> <tr> <td>LPV DA*</td> <td colspan="2">461/18</td> <td>200</td> <td colspan="2">(200-1/2)</td> </tr> <tr> <td>LNAV/VNAV DA**</td> <td colspan="2">646/40</td> <td>385</td> <td colspan="2">(400-3/4)</td> </tr> <tr> <td>LNAV MDA***</td> <td>700/24</td> <td>439 (500-1/2)</td> <td>700/40</td> <td>439 (500-3/4)</td> <td></td> </tr> <tr> <td>CIRCLING****</td> <td>780-1</td> <td>501 (600-1)</td> <td>780-1 1/2</td> <td>501 (600-1 1/2)</td> <td>840-2 561 (600-2)</td> </tr> </tbody> </table>	CATEGORY	A	B	C	D	E	LPV DA*	461/18		200	(200-1/2)		LNAV/VNAV DA**	646/40		385	(400-3/4)		LNAV MDA***	700/24	439 (500-1/2)	700/40	439 (500-3/4)		CIRCLING****	780-1	501 (600-1)	780-1 1/2	501 (600-1 1/2)	840-2 561 (600-2)	<p>HIRL all Rwys TDZL/CL Rwys 1L, 19R</p> <p>010° to RWY 01L</p>	
CATEGORY	A	B	C	D	E																											
LPV DA*	461/18		200	(200-1/2)																												
LNAV/VNAV DA**	646/40		385	(400-3/4)																												
LNAV MDA***	700/24	439 (500-1/2)	700/40	439 (500-3/4)																												
CIRCLING****	780-1	501 (600-1)	780-1 1/2	501 (600-1 1/2)	840-2 561 (600-2)																											

CAMP SPRINGS, MARYLAND

38°49'N - 76°52'W

JOINT BASE ANDREWS (KADW)

Amdt 1 02MAR17

RNAV (GPS) RWY 1L

NE-3, 03 JAN 2019 to 31 JAN 2019

NE-3, 03 JAN 2019 to 31 JAN 2019