

CAMP SPRINGS, MARYLAND

# TACAN RWY 19L

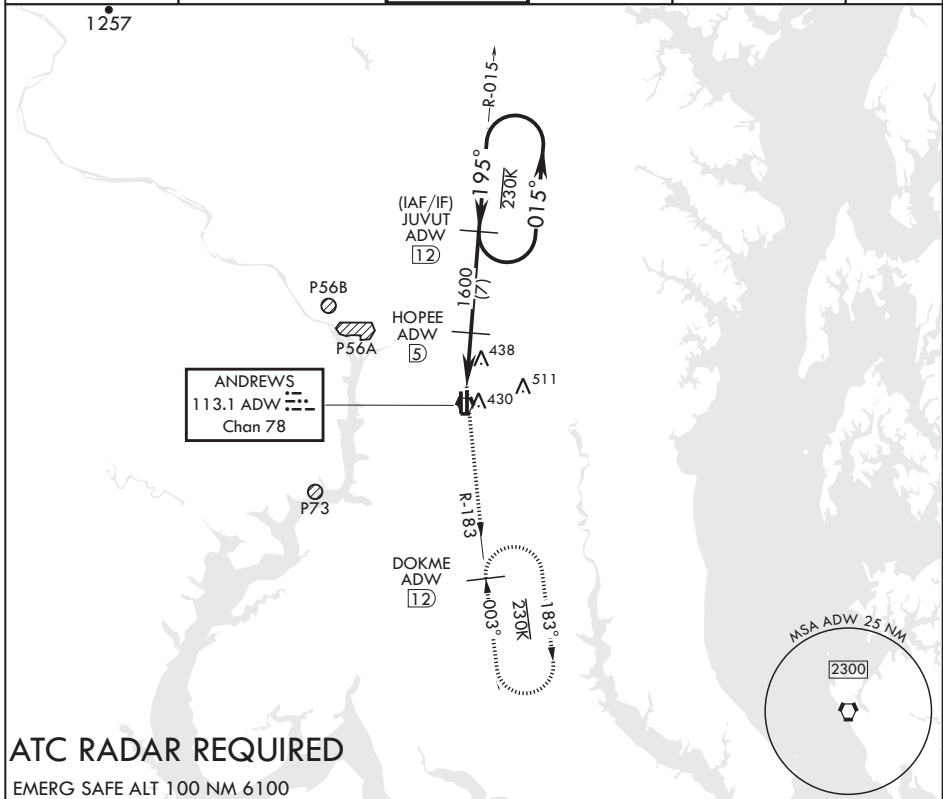
VORTAC ADW 113.1 Chan 78	APCH CRS 195°	Rwy Idg TDZE Arpt Elev	9756 279 280
--------------------------------	------------------	------------------------------	--------------------

AL-561 (USAF)

JOINT BASE ANDREWS (KADW)

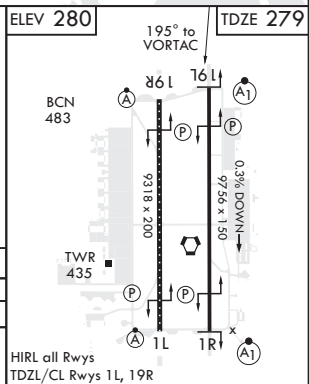
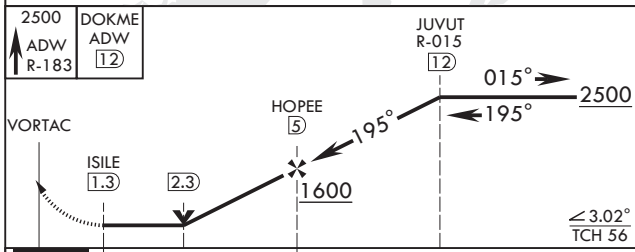
<p>⚠ * When ALS inop, increase CAT AB RVR to 55 and vis to 1 mile, CAT CDE vis to 1 3/8 miles. ** Circling not authorized W of Rwy 1L-19R.</p>	<p>ALSF-1  </p>	<p>MISSED APPROACH: Climbing to 2500 via ADW VORTAC R-183 to DOKME and hold.</p>
--	--	--

ATIS 133.675 251.05	POTOMAC APP CON 128.0 335.5	TOWER 118.4 349.0	GND CON 121.8 275.8	CLNC DEL 127.55 285.475	CPDLC
------------------------	--------------------------------	----------------------	------------------------	----------------------------	-------



## ATC RADAR REQUIRED

EMERG SAFE ALT 100 NM 6100



CATEGORY	A	B	C	D	E
S-19L*	740/24 461 (500-1/2)		740/50	461 (500-1)	
CIRCLING**	780-1 501 (600-1)		780-1 1/2 501 (600-1 1/2)	840-2 561 (600-2)	

CAMP SPRINGS, MARYLAND

38°49'N - 76°52'W

JOINT BASE ANDREWS (KADW)

Amdt 2 02MAR17

# TACAN RWY 19L

NE-3, 03 JAN 2019 to 31 JAN 2019

NE-3, 03 JAN 2019 to 31 JAN 2019