

CAMP SPRINGS, MARYLAND

TACAN RWY 1L

VORTAC ADW 113.1 Chan 78	APCH CRS 021°	Rwy ldg TDZE Arpt Elev	9318 261 280
--------------------------------	------------------	------------------------------	--------------------

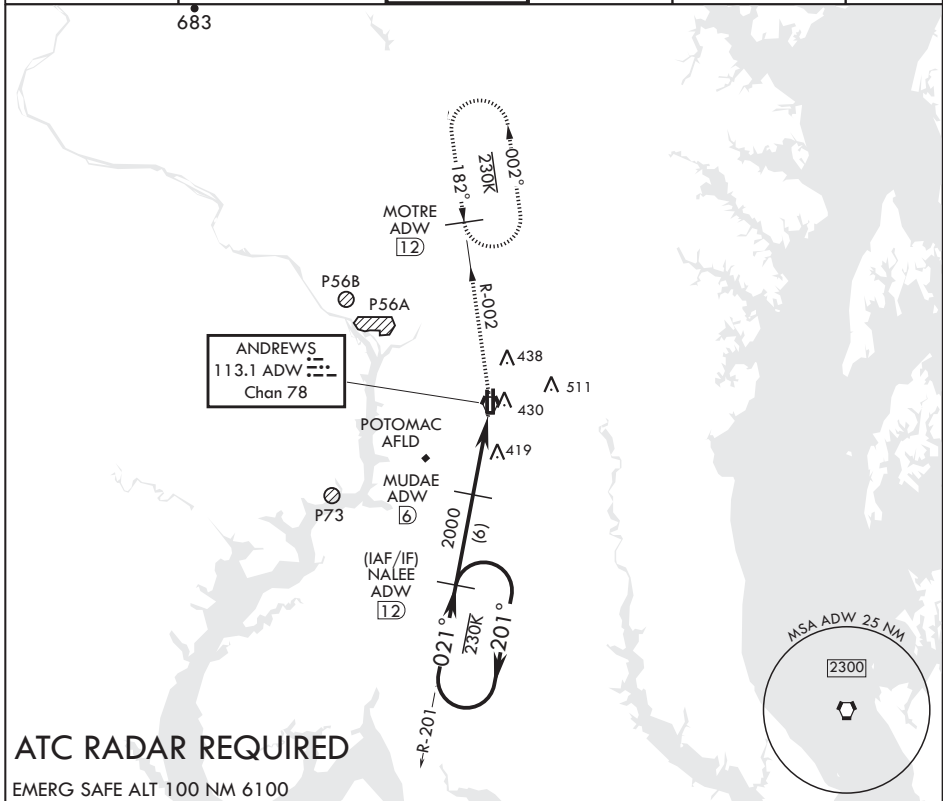
AL-561 (USAF)

JOINT BASE ANDREWS (KADW)

▼ * When ALS inop, increase CAT AB RVR to 55, and vis to 1 mile, CAT CDE vis to 1 3/8 miles.
** Circling not authorized W of Rwy 1L-19R.

ALSF-2
MISSED APPROACH: Climb to 2500 via ADW VORTAC R-002 to MOTRE/ADW 12 DME and hold.

ATIS 133.675 251.05	POTOMAC APP CON 128.0 335.5	TOWER 118.4 349.0	GND CON 121.8 275.8	CLNC DEL 127.55 285.475	CPDLC
------------------------	--------------------------------	----------------------	------------------------	----------------------------	-------



ATC RADAR REQUIRED

EMERG SAFE ALT 100 NM 6100

<p>2500 ← 201°</p> <p>← 201°</p> <p>2.92° ≥ TCH 72</p> <p>NALEE R-201 (12)</p> <p>MUDAE (6)</p> <p>2000</p> <p>VORTAC</p> <p>COSUR (8)</p> <p>5.2 NM</p> <p>2500 ADW R-002</p> <p>MOTRE ADW (12)</p> <p>ELEV 280</p> <p>TDZE 261</p> <p>BCN 483</p> <p>TWR 435</p> <p>9318 x 200</p> <p>9756 x 150</p> <p>0.3% UP</p> <p>11L 1R</p> <p>HIRL all Rwys TDZL/CL Rwys 1L, 19R</p> <p>021° to VORTAC</p>					
CATEGORY	A	B	C	D	E
S-1L*	720/24 459 (500-½)		720/45 459 (500-7/8)		
C CIRCLING**	780-1 501 (600-1)		780-1½ 501 (600-1½)	840-2 561 (600-2)	

CAMP SPRINGS, MARYLAND

38°49'N - 76°52'W

JOINT BASE ANDREWS (KADW)

Amdt 1 02MAR17

TACAN RWY 1L

NE-3, 03 JAN 2019 to 31 JAN 2019

NE-3, 03 JAN 2019 to 31 JAN 2019