

CAMP SPRINGS, MARYLAND

TACAN-A

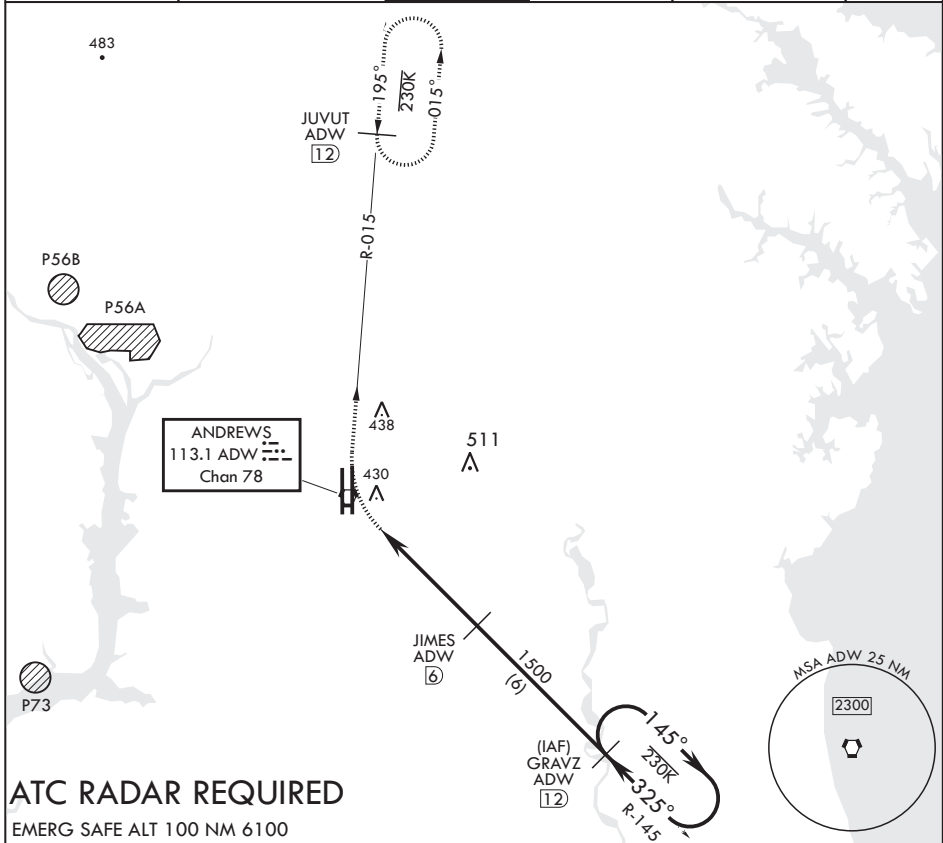
VORTAC ADW 113.1 Chan 78	APCH CRS 325°	Rwy ldg TDZE Arprt Elev	N/A N/A 280
--------------------------------	------------------	-------------------------------	-------------------

AL-561 (USAF)

JOINT BASE ANDREWS (KADW)

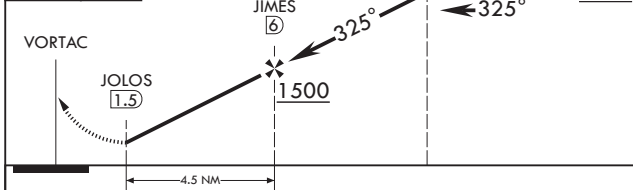
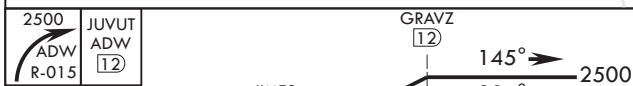
⚠ * Circling not authorized west of Rwy 1L-19R. MISSED APPROACH: Climbing right turn to 2500 via ADW R-015 to JUVUT and hold.

ATIS 133.675 251.05	POTOMAC APP CON 128.0 335.5	TOWER 118.4 349.0	GND CON 121.8 275.8	CLNC DEL 127.55 285.475	CPDLC
------------------------	--------------------------------	----------------------	------------------------	----------------------------	-------

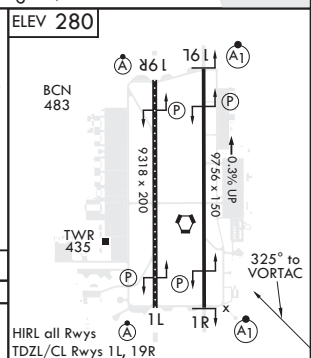


ATC RADAR REQUIRED

EMERG SAFE ALT 100 NM 6100



CATEGORY	A	B	C	D	E
C CIRCLING*	780-1¼ 500 (500-1¼)		780-1½ 500 (500-1½)	840-2 560 (600-2)	



CAMP SPRINGS, MARYLAND

38°49'N - 76°52'W

JOINT BASE ANDREWS (KADW)

Amdt 2 12OCT17

TACAN-A

NE-3, 03 JAN 2019 to 31 JAN 2019

NE-3, 03 JAN 2019 to 31 JAN 2019