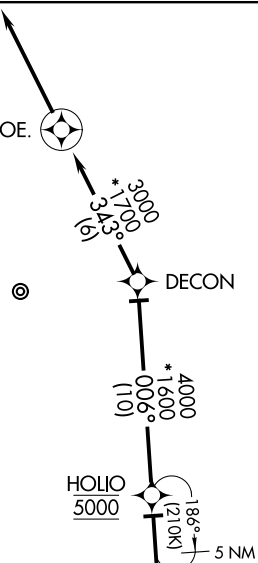


# VUDOO TWO ARRIVAL (RNAV) Arrival Routes

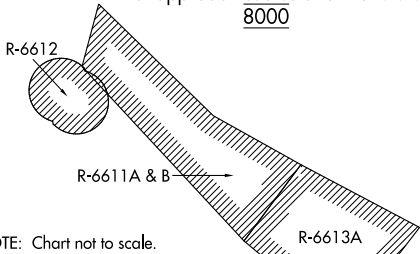
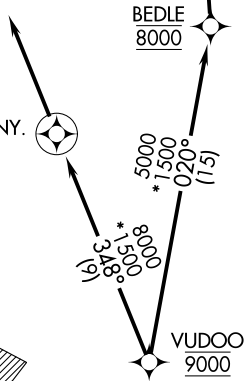
POTOMAC APP CON  
126.4 282.375  
ATIS  
113.1 251.05  
TOWER  
118.4 349.0

**REVOE**  
Landing south: Rwy 19L/R:  
Expect RADAR vectors to  
final approach course after REVOE.



- NOTE: RADAR required.
- NOTE: RNAV 1.
- NOTE: DME/DME/IRU or GPS required.
- NOTE: P56 area A/B 1.5 NM north of DCA, avoid surface to 18000 MSL.

**FUNNY**  
Landing north: Rwy 1L/R:  
Expect RADAR vectors to  
final approach course after FUNNY.  
8000



NOTE: Chart not to scale.

## ARRIVAL ROUTE DESCRIPTION

**LANDING NORTH RWYS 1L/R:** From VUDOO on track 348° to cross FUNNY at 8000, then on track 348°. Expect RADAR vectors to final approach course.

**LANDING SOUTH RWYS 19L/R:** From VUDOO on track 020° to cross BEDLE at 8000, then on track 006° to cross HOLIO at 5000, then on track 006° to DECON, then on track 343° to REVOE, then on track 343°. Expect RADAR vectors to final approach course.

# VUDOO TWO ARRIVAL (RNAV) Arrival Routes