

# DEEPO ONE ARRIVAL (RNAV)

NE-1, 03 JAN 2019 to 31 JAN 2019

- GROTON TRANSITION (GON.DEEPO1)
- NORWICH TRANSITION (ORW.DEEPO1)
- RIFLE TRANSITION (RIFLE.DEEPO1)

- BOSTON APP CON ★
- 133.75 318.1
- NANTUCKET ATIS
- 127.5
- NANTUCKET TOWER ★
- 118.3 (CTAF)

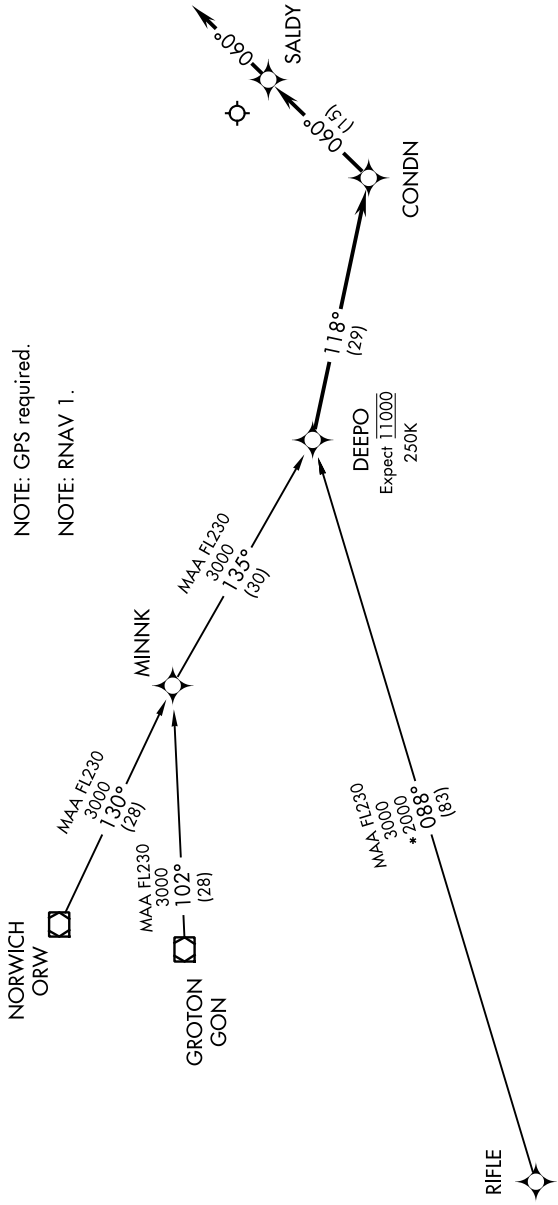
... From DEEPO, via 118° track to CONDN; thence via 060° track to SALDY. Depart SALDY heading 060°, expect radar vectors to final approach course.



NOTE: RADAR required.

NOTE: GPS required.

NOTE: RNAV 1.



NOTE: Chart not to scale.

NE-1, 03 JAN 2019 to 31 JAN 2019