

WAAS CH 97623 W15A	APP CRS 151°	Rwy Idg 4500 TDZE 45 Apt Elev 47
--	------------------------	---

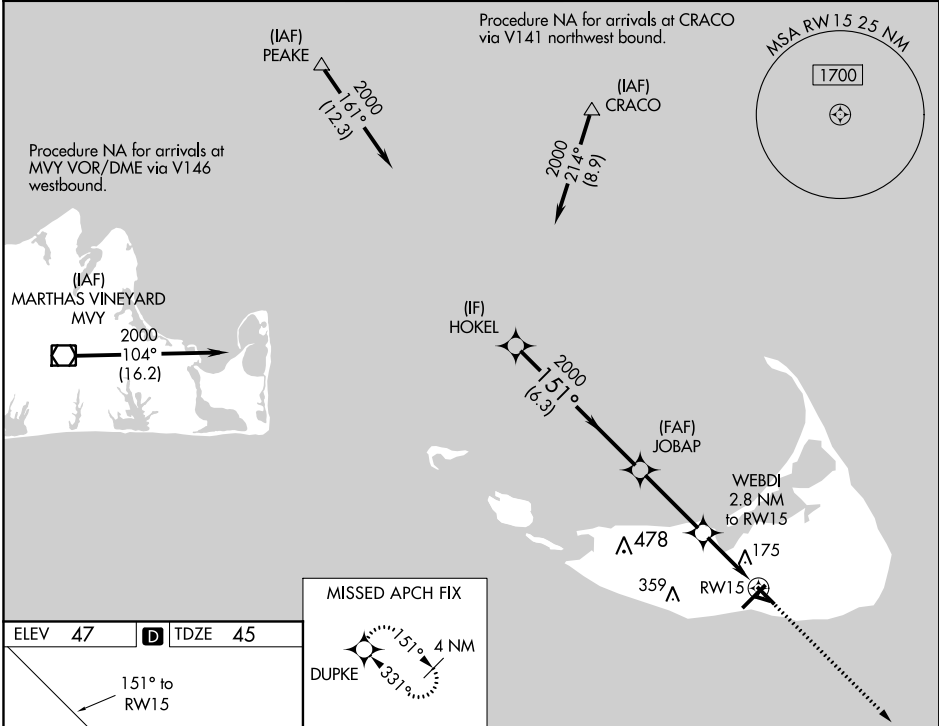
RNAV (GPS) RWY 15

NANTUCKET MEMORIAL (ACK)

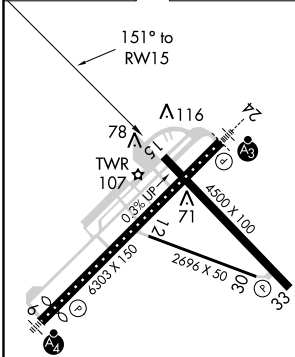
▼ Baro-VNAV NA when using Hyannis altimeter setting. For uncompensated Baro-VNAV systems, LNAV/VNAV NA below -15°C (5°F) or above 43°C (109°F). DME/DME RNP-0.3 NA.
▲ Helicopter visibility reduction below 3/4 SM NA. When local altimeter setting not received, use Hyannis altimeter setting and increase LPV DA to 358, LNAV/VNAV DA to 543, and all MDA 80 feet; increase LNAV/VNAV all Cats and LNAV Cats C and D visibility 1/4 mile.

MISSED APPROACH:
Climb to 2300 direct
DUPKE and hold.

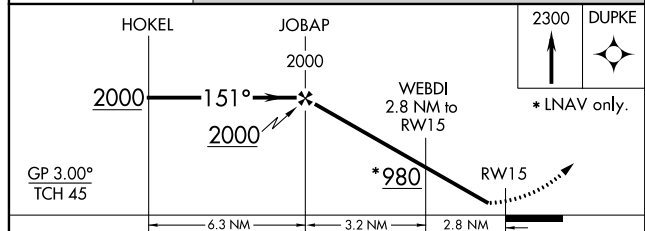
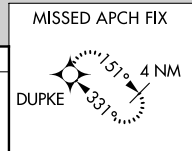
ATIS 127.5	BOSTON APP CON * 126.1 318.1	NANTUCKET TOWER * 118.3 (CTAF) 0	GND CON 132.5	CLNC DEL 119.375	UNICOM 122.95
----------------------	--	--	-------------------------	----------------------------	-------------------------



ELEV 47	D	TDZE 45
---------	----------	---------



TDZ/CL Rwy 24
REIL Rws 15 and 33
MIRL Rwy 15-33
HIRL Rwy 6-24



CATEGORY	A	B	C	D
LPV DA		295-1	250 (300-1)	
LNAV/VNAV DA		480-1½	435 (500-1½)	
LNAV MDA	440-1	395 (400-1)	440-1½	395 (400-1½)
CIRCLING	480-1 433 (500-1)	500-1 453 (500-1)	500-1½ 453 (500-1½)	600-2 553 (600-2)

NE-1, 03 JAN 2019 to 31 JAN 2019

NE-1, 03 JAN 2019 to 31 JAN 2019