

WAAS CH <b>77835</b> <b>W33A</b>	APP CRS <b>331°</b>	Rwy Idg TDZE Apt Elev	<b>4500</b> <b>41</b> <b>47</b>
--	------------------------	-----------------------------	---------------------------------------

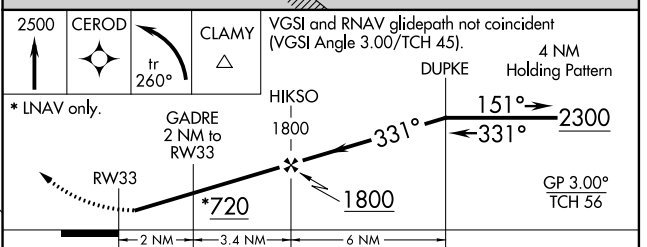
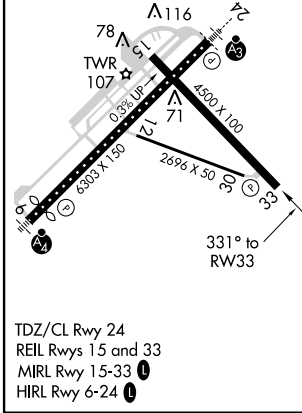
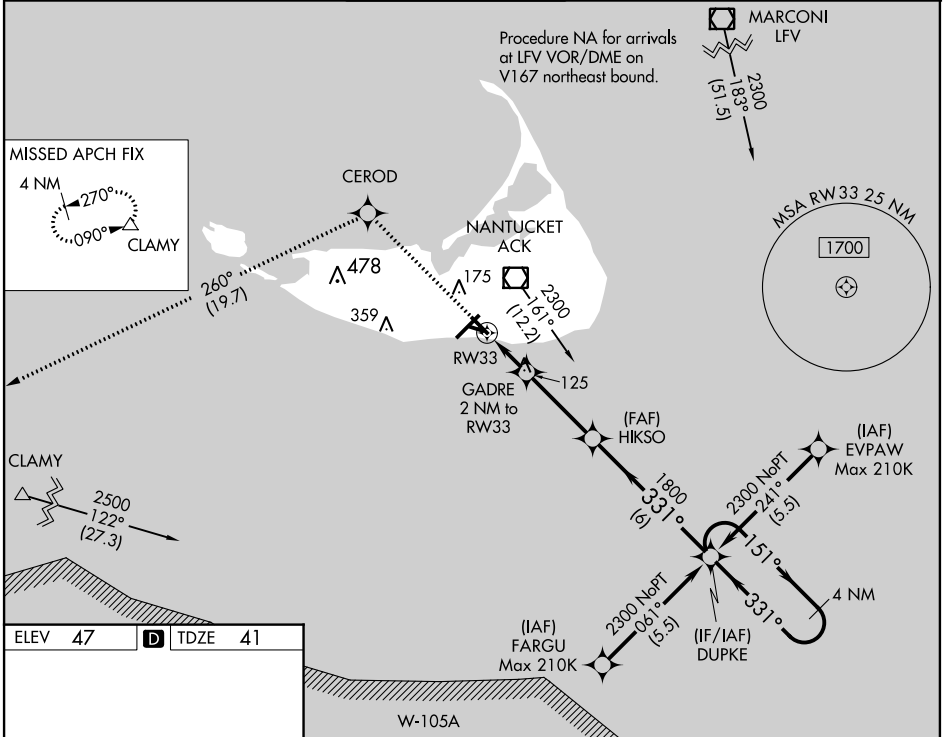
# RNAV (GPS) RWY 33

NANTUCKET MEMORIAL (ACK)

**Baro-VNAV NA** when using Hyannis altimeter setting. For uncompensated Baro-VNAV systems, LNAV/VNAV NA below -11°C (13°F) or above 54°C (130°F). When local altimeter setting not received, use Hyannis altimeter setting: increase all DA 63 feet and all MDA 80 feet; increase LNAV Cats C and D visibility 1/8 mile and Circling Cat C visibility 1/4 mile. DME/DME RNP-0.3 NA.

**MISSED APPROACH:** Climb to 2500 direct CEROD and on track 260° to CLAMY and hold.

ATIS <b>127.5</b>	BOSTON APP CON* <b>126.1 318.1</b>	NANTUCKET TOWER* <b>118.3 (CTAF) 0</b>	GND CON <b>132.5</b>	CLNC DEL <b>119.375</b>	UNICOM <b>122.95</b>
----------------------	---------------------------------------	---	-------------------------	----------------------------	-------------------------



CATEGORY	A	B	C	D
LPV DA		291-1	250 (300-1)	
LNAV/VNAV DA		301-1	260 (300-1)	
LNAV MDA		380-1	339 (400-1)	
CIRCLING	480-1	500-1	720-2	1000-3
	433 (500-1)	453 (500-1)	673 (700-2)	953 (1000-3)

NE-1, 03 JAN 2019 to 31 JAN 2019

NE-1, 03 JAN 2019 to 31 JAN 2019