

ACK VOR/DME 116.2 Chan 109	APP CRS 240°	Rwy Idg 6303 TDZE 48 Apt Elev 48
--	------------------------	---

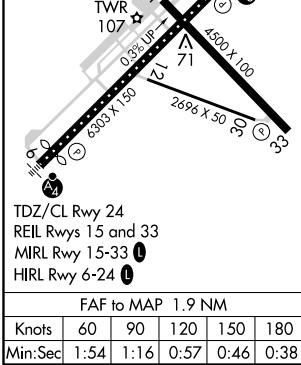
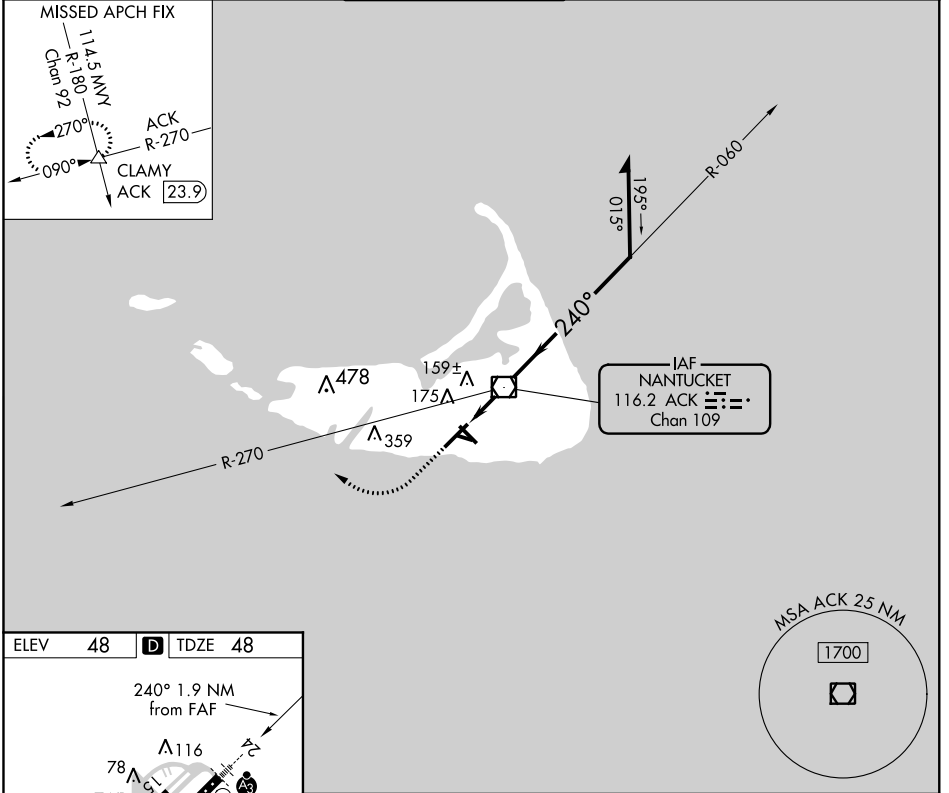
VOR RWY 24

NANTUCKET MEMORIAL (ACK)

⚠ When local altimeter setting not received, use Hyannis altimeter setting and increase all MDA 80 feet; increase S-24 Cat C visibility to RVR 4000. VDP NA when using Hyannis altimeter setting. For Inoperative SSALR, increase S-24 Cat D visibility to RVR 6000.

SSALR MISSED APPROACH: Climb to 700 then climbing right turn to 2500 via heading 310° and ACK VOR/DME R-270 to CLAMY INT/ACK 23.9 DME and hold.

ATIS 127.5	BOSTON APP CON* 126.1 318.1	NANTUCKET TOWER * 118.3 (CTAF) 0	GND CON 132.5	CLNC DEL 119.375	UNICOM 122.95
----------------------	---------------------------------------	--	-------------------------	----------------------------	-------------------------



700	2500	CLAMY	ACK VOR/DME	Remain within 10 NM
↑	hdg 310°	ACK R-270	6000	060°
			800	240°
			ACK 1.9	ACK 0.9
			≤ 3.47° TCH 48	VGSI and descent angles not coincident (VGSI Angle 3.00/TCH 48).
			1 NM	0.9 NM
CATEGORY	A	B	C	D
S-24	440/24 392 (400-½)			440/50 392 (400-1)
CIRCLING	480-1 432 (500-1)	500-1 452 (500-1)	500-1½ 452 (500-1½)	600-2 552 (600-2)

NE-1, 03 JAN 2019 to 31 JAN 2019

NE-1, 03 JAN 2019 to 31 JAN 2019