

LOC/DME I-ZK	APP CRS	Rwy Idg	7501
109.9	225°	TDZE	933
Chan 36		Apt Elev	962

ILS or LOC/DME RWY 22

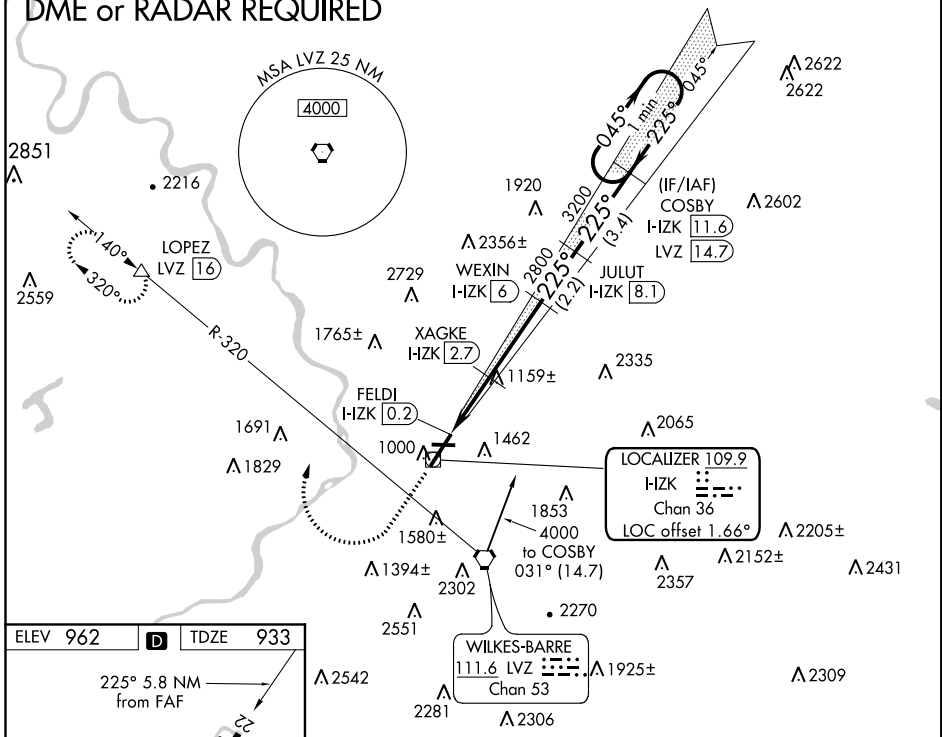
WILKES-BARRE/SCRANTON INTL (AVP)

⚠ When local altimeter setting not received, procedure NA. Circling NA for Cats C and D southeast of Rwy 4-22. **⚠** -21°C. DME required. Night landing: Rwy 10, 28 NA.

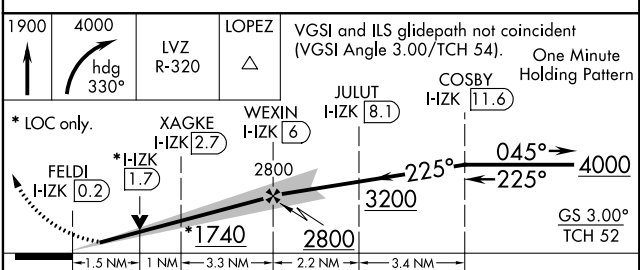
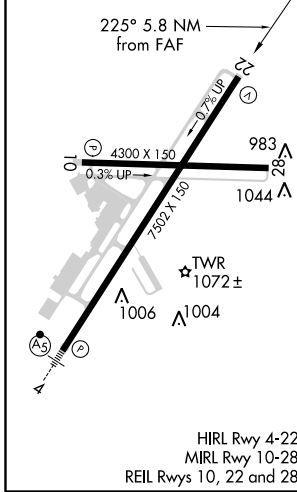
MISSED APPROACH: Climb to 1900 then climbing right turn to 4000 on heading 330° and LVZ VORTAC R-320 to LOPEZ/LVZ 16 DME and hold.

ATIS 111.6	WILKES-BARRE APP CON 120.95 256.7 126.3 256.7 (101°-279°)	WILKES-BARRE TOWER 120.1 257.8	GND CON 121.9
----------------------	---	--	-------------------------

DME or RADAR REQUIRED



ELEV 962	D	TDZE 933
-----------------	----------	-----------------



CATEGORY	A	B	C	D
S-ILS 22	1201/45		268 (300-7%)	
S-LOC 22	1420/55	487 (500-1)	1420-1 ³ / ₈	487 (500-1 ³ / ₈)
C CIRCLING	1840-1 ¹ / ₄ 878 (900-1 ¹ / ₄)	1980-1 ¹ / ₂ 1018 (1100-1 ¹ / ₂)	1980-3 1018 (1100-3)	2280-3 1318 (1400-3)

NE-4, 03 JAN 2019 to 31 JAN 2019

NE-4, 03 JAN 2019 to 31 JAN 2019