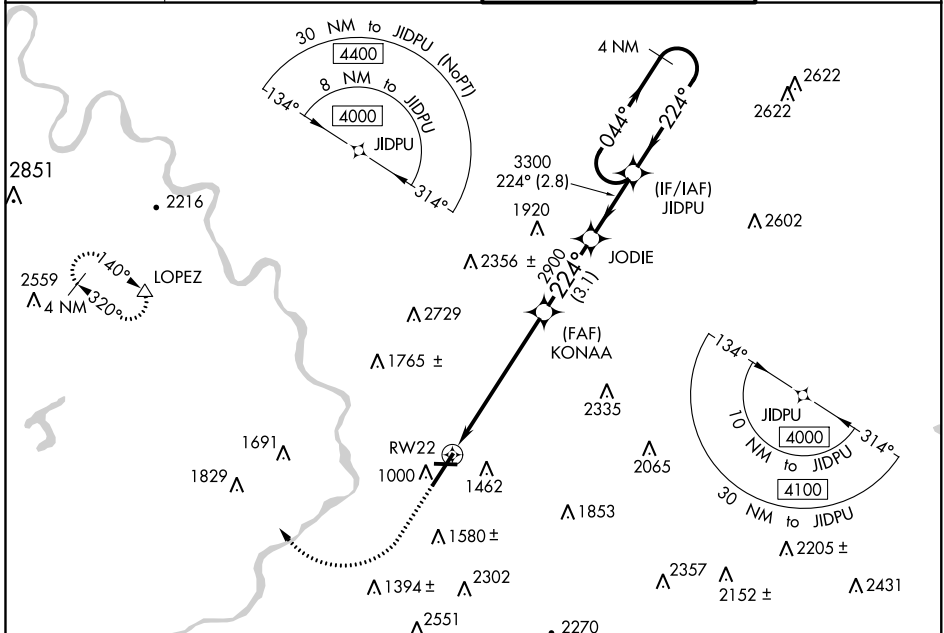


WAAS CH <b>69213</b> <b>W22A</b>	APP CRS <b>224°</b>	Rwy Idg TDZE <b>933</b> Apt Elev <b>962</b>
--	------------------------	---

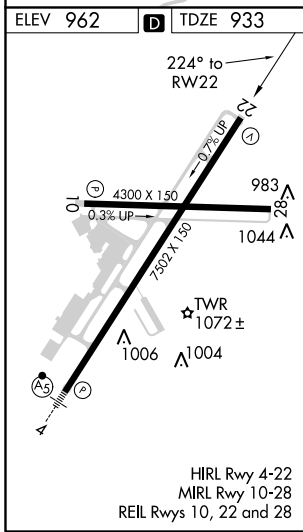
**RNAV (GPS) RWY 22**  
WILKES-BARRE/SCRANTON INTL (A.V.P)

<p>⚠ Night landing: Rwy 10, 28 NA. For uncompensated Baro-VNAV systems, LNAV/VNAV NA below -17°C (2°F) or above 54°C (130°F). When local altimeter settings not received, procedure NA. Circling NA for Cats C and D southeast of Rwy4-22. DME/DME RNP-0.3 NA.</p>	<p>MISSED APPROACH: Climb to 1900 then climbing right turn to 4000 direct LOPEZ and hold.</p>		
<p>ATIS <b>111.6</b></p>	<p>WILKES-BARRE APP CON <b>120.95 256.7</b> (280°-100°) <b>126.3 256.7</b> (101°-279°)</p>	<p>WILKES-BARRE TOWER <b>120.1 257.8</b></p>	<p>GND CON <b>121.9</b></p>



NE-4, 03 JAN 2019 to 31 JAN 2019

NE-4, 03 JAN 2019 to 31 JAN 2019



	1900	4000	LOPEZ	VGSI and RNAV glidepath not coincident (VGSI Angle 3.00/TCH 54).	4 NM Holding Pattern
*LNAV only.	<p>*1.8 NM to RWY 22</p> <p>KONAAA 2900</p> <p>JODIE 2900</p> <p>JIDPU 4000</p> <p>GP 3.00° TCH 51</p>				
	1.8 NM	4.3 NM	3.1 NM	2.8 NM	
CATEGORY	A	B	C	D	
LPV DA		1178/40	245 (200-¾)		
LNAV/VNAV DA		1392-1½	459 (500-1½)		
LNAV MDA	1500/55	567 (600-1)	1500-1¾	567 (600-1¾)	
CIRCLING	1840-1¼ 878 (900-1¼)	1980-1½ 1018 (1100-1½)	1980-3 1018 (1100-3)	2280-3 1318 (1400-3)	