


WAAS CH <b>62813</b> <b>W04A</b>	APP CRS <b>044°</b>	Rwy Idg <b>7501</b> TDZE <b>962</b> Apt Elev <b>962</b>
--	------------------------	---

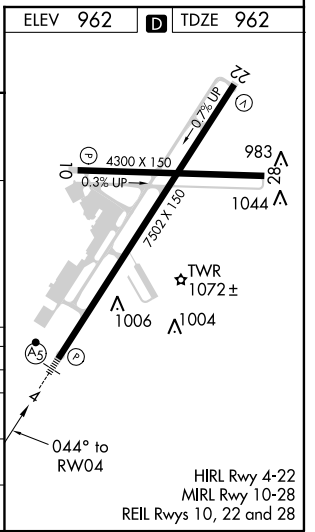
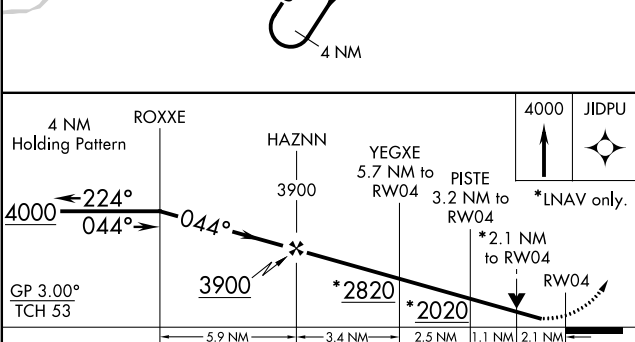
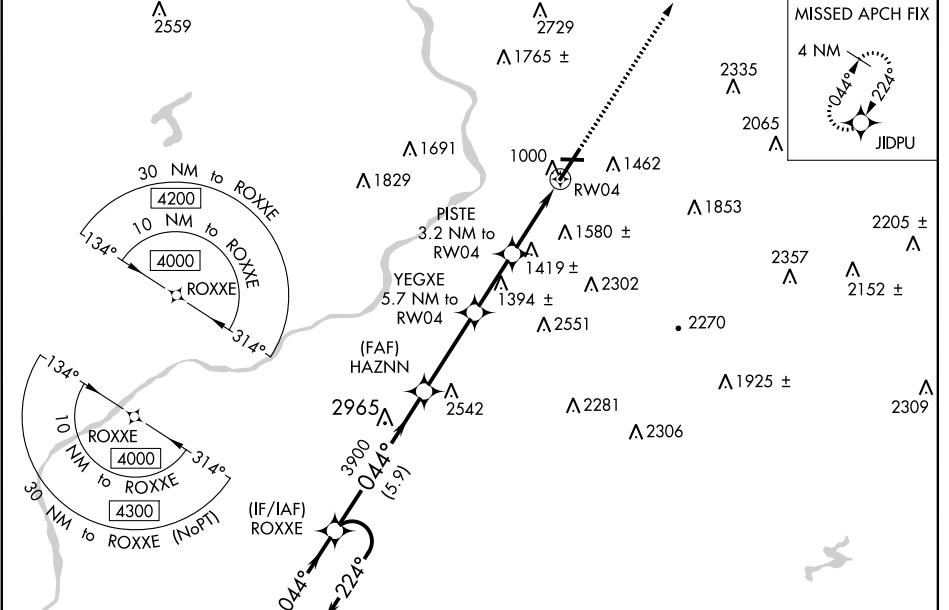
# RNAV (GPS) RWY 4

WILKES-BARRE/SCRANTON INTL (A VP)

**⚠** Circling to Rwy 10 and 28 NA at night. For uncompensated Baro-VNAV systems, LNAV/VNAV NA below -17°C (2°F) or above 54°C (130°F). When local altimeter setting not received, procedure NA. For inop MALS/R, increase LNAV Cats C/D visibility to 2 miles. Circling NA for Cats C and D southeast of Rwy 4-22. DME/DME RNP-0.3 NA. **\*\*RVR 1800 authorized with use of FD or AP or HUD to DA.**

**MALS/R**  **MISSED APPROACH:** Climb to 4000 direct JIDPU and hold.

ATIS <b>111.6</b>	WILKES-BARRE APP CON <b>120.95 256.7</b> (280°-100°) <b>126.3 256.7</b> (101°-279°)	WILKES-BARRE TOWER <b>120.1 257.8</b>	GND CON <b>121.9</b>
----------------------	---	--	-------------------------



CATEGORY	A	B	C	D
LPV DA **		1162/24	200 (200-½)	
LNAV/VNAV DA		1618-1¾	656 (700-1¾)	
LNAV MDA	1680/24	718 (800-½)	1680-1½	718 (800-1%)
<b>C</b> CIRCLING	1840-1¼ 878 (900-1¼)	1980-1½ 1018 (1100-1½)	1980-3 1018 (1100-3)	2280-3 1318 (1400-3)

NE-4, 03 JAN 2019 to 31 JAN 2019

NE-4, 03 JAN 2019 to 31 JAN 2019

HIRL Rwy 4-22  
MIRL Rwy 10-28  
REIL Rws 10, 22 and 28