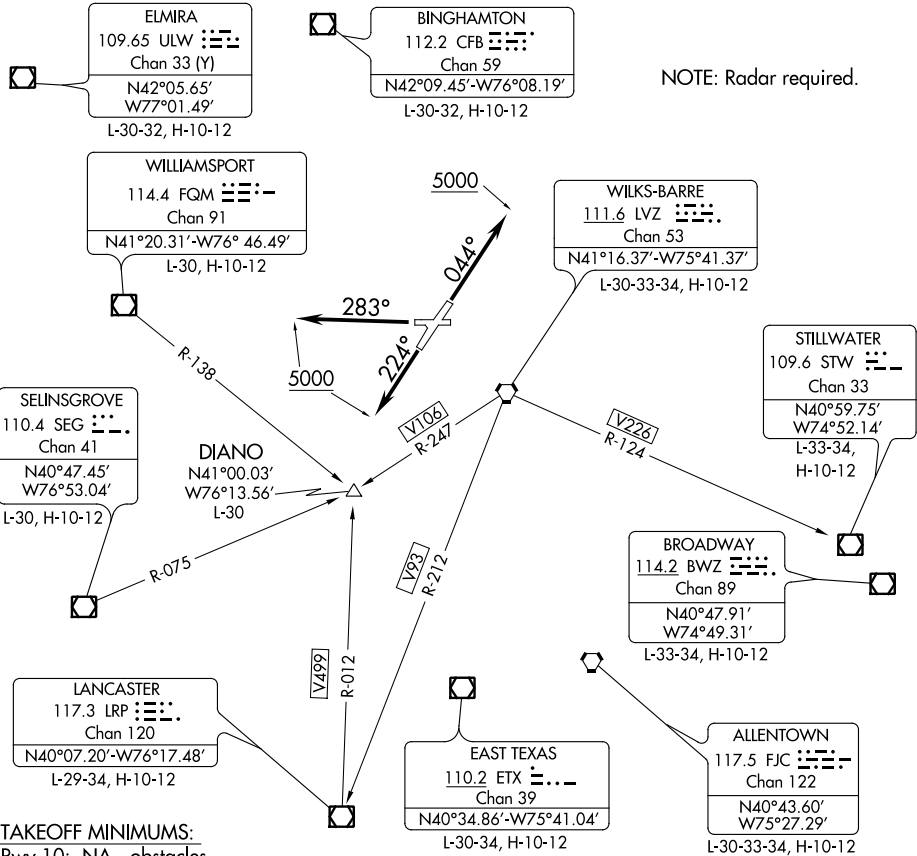


# SCRANTON SEVEN DEPARTURE

WILKES-BARRE/SCRANTON INTL (AVP)  
WILKES-BARRE/SCRANTON, PENNSYLVANIA

ATIS 111.6  
GND CON  
121.9  
WILKES-BARRE TOWER  
120.1 257.8  
WILKES-BARRE DEP CON  
120.95 256.7 (NORTH)  
126.3 256.7 (SOUTH)

**TOP ALTITUDE:  
5000**



**TAKEOFF MINIMUMS:**

- Rwy 10: NA - obstacles.
- Rwy 4: Standard with minimum climb of 400' per NM to 2700.
- Rwy 22: Standard with minimum climb of 290' per NM to 3100.
- Rwy 28: Standard with minimum climb of 270' per NM to 2100.

NOTE: Chart not to scale.

## DEPARTURE ROUTE DESCRIPTION

- TAKEOFF RUNWAY 4:** Climb heading 044° to 5000, thence....
- TAKEOFF RUNWAY 22:** Climb heading 224° to 5000, thence....
- TAKEOFF RUNWAY 28:** Climb heading 283° to 5000, thence....

....expect radar vectors to assigned route/navaid/fix and clearance to filed altitude/flight level within ten (10) minutes after departure.

# SCRANTON SEVEN DEPARTURE

NE-4, 03 JAN 2019 to 31 JAN 2019

NE-4, 03 JAN 2019 to 31 JAN 2019