

VORTAC MKK <b>116.1</b> Chan <b>108</b>	APP CRS <b>066°</b>	Rwy Idg TDZE Apt Elev <b>N/A</b> <b>N/A</b> <b>454</b>
---	------------------------	---

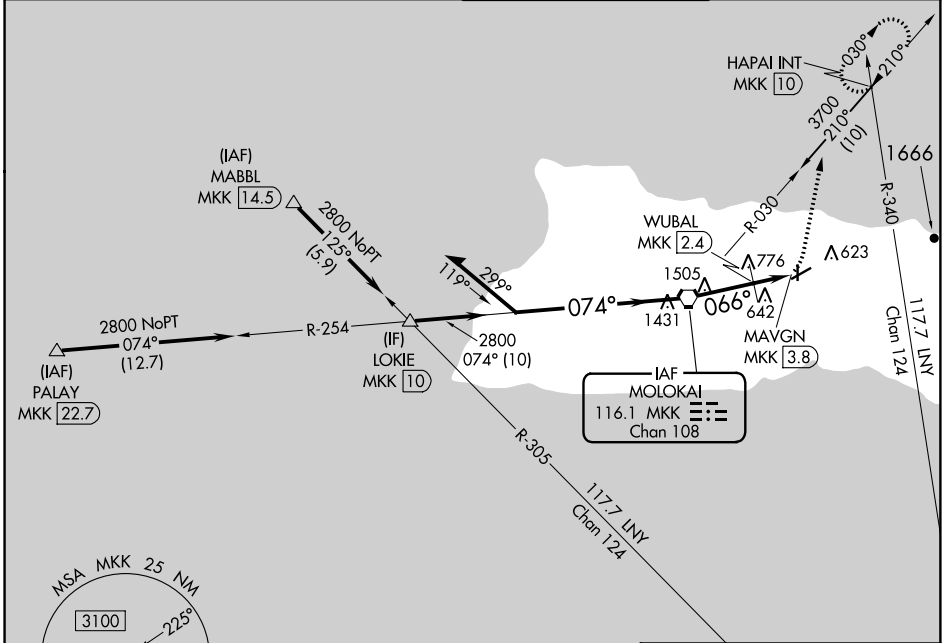
# VOR or TACAN-A

MOLOKAI (MKK) (PHMK)

**⚠** Circling Rwy 17, 23 NA at night.

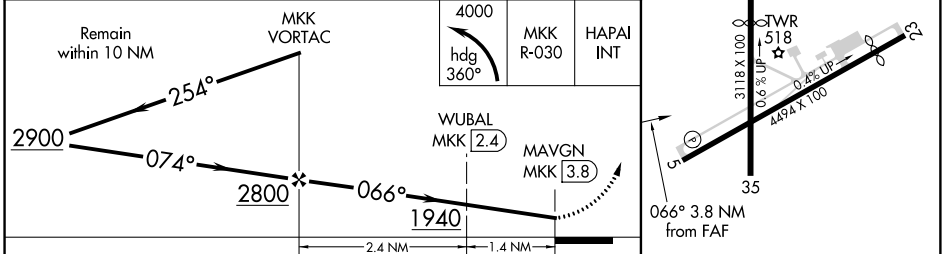
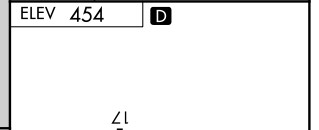
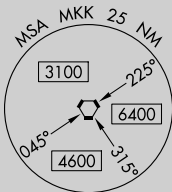
MISSED APPROACH: Climbing left turn to 4000 on heading 360° and on MKK VORTAC R-030 to HAPAI INT/MKK 10 DME and hold, continue climb-in-hold to 4000.

ATIS <b>128.2</b>	HCF CENTER <b>124.1 317.5</b>	MOLOKAI TOWER★ <b>125.7 (CTAF) 306.2</b>	GND CON <b>121.9</b>
----------------------	----------------------------------	---	-------------------------



PAC: 03 JAN 2019 to 28 FEB 2019

PAC: 03 JAN 2019 to 28 FEB 2019



CATEGORY	A	B	C	D	
<b>C</b> CIRCLING	1940-¼ 1486 (1500-¼)	1940-1½ 1486 (1500-1½)	1940-3	1486 (1500-3)	
WUBAL FIX MINIMUMS (DME REQUIRED)					
<b>C</b> CIRCLING	1400-1¼ 946 (1000-1¼)		1680-3 1226 (1300-3)	1940-3 1486 (1500-3)	
REIL Rwy 5					
MIRL Rlys 5-23 and 17-35					
FAF to MAP 3.8 NM					
Knots	60	90	120	150	180
Min:Sec	3:48	2:32	1:54	1:31	1:16