

WAAS CH 69503 W27A	APP CRS 274°	Rwy Idg 6122 TDZE 813 Apt Elev 813
--	------------------------	---

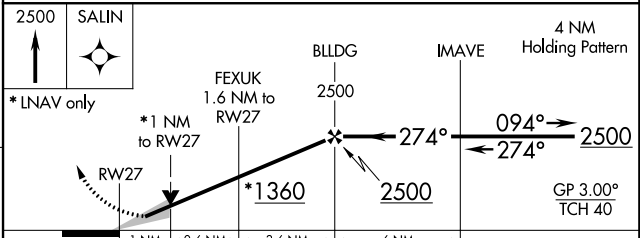
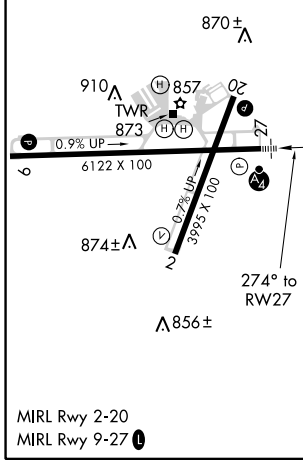
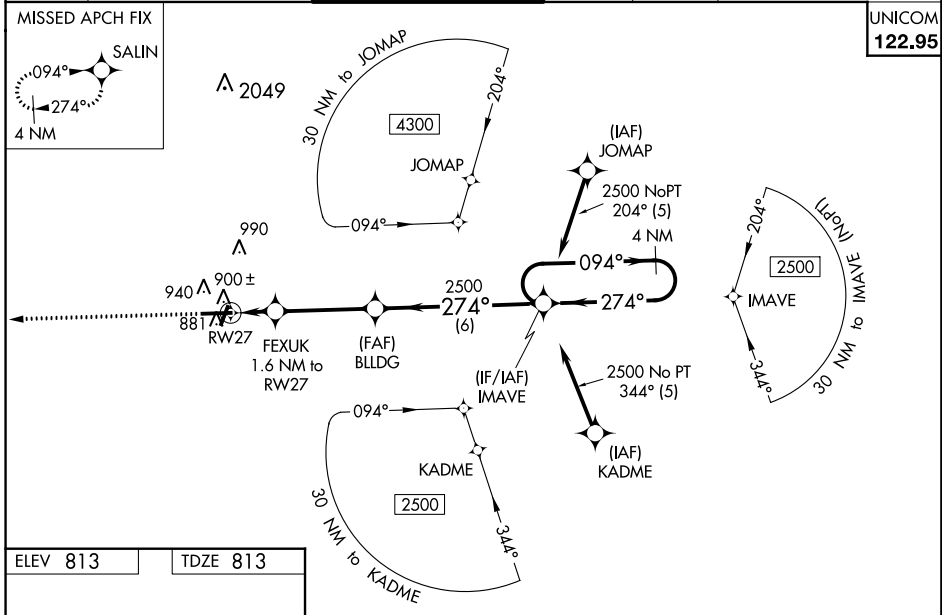
RNAV (GPS) RWY 27

ATHENS/BEN EPPS (AHN)

⚠ For uncompensated Baro-VNAV systems, LNAV/VNAV NA below -9°C (16°F) or above 54°C (130°F). DME/DME RNP-0.3 NA. When local altimeter setting not received, use Winder altimeter setting: increase LPV DA to 1071 feet; increase LNAV/VNAV DA to 1121 feet; increase all MDA 60 feet and increase LNAV Cat C/D visibility to 1 mile and Circling Cat D visibility to 2 1/4 mile. For inop MALSF, increase LNAV/VNAV all Cats visibility to 3/8 mile, increase LNAV Cat C/D visibility to 1 mile. For inop MALSF when using Winder altimeter setting increase LPV all Cats visibility to 3/8 mile, increase LNAV/VNAV all Cats visibility to 1 mile, increase LNAV Cat C, D visibility to 1 1/8 mile. Baro-VNAV and VDP NA when using Winder altimeter setting. Night landing: Rwy 2, 20 NA. Inop table does not apply to LPV.

MALSF MISSED APPROACH:
Climb to 2500 direct SALIN and hold.

ASOS 132.875	ATLANTA APP CON * 132.475 291.1 316.05	ATHENS TOWER * 126.3 (CTAF) 0 338.275	GND CON 121.8	CLNC DEL 121.8	CLNC DEL 132.475 291.1 316.05 (when tower closed)
------------------------	--	---	-------------------------	--------------------------	--



CATEGORY	A	B	C	D
LPV DA		1013-3/4	200 (200-3/4)	
LNAV/VNAV DA		1063-3/4	250 (300-3/4)	
LNAV MDA		1160-3/4	347 (400-3/4)	
C CIRCLING	1260-1 447 (500-1)	1280-1 467 (500-1)	1320-1 1/2 507 (600-1 1/2)	1460-2 647 (700-2)

SE-4, 03 JAN 2019 to 31 JAN 2019

SE-4, 03 JAN 2019 to 31 JAN 2019