

VOR/DME AHN	APP CRS	Rwy Idg	3995
109.6	014°	TDZE	805
Chan 33		Apt Elev	808

VOR RWY 2

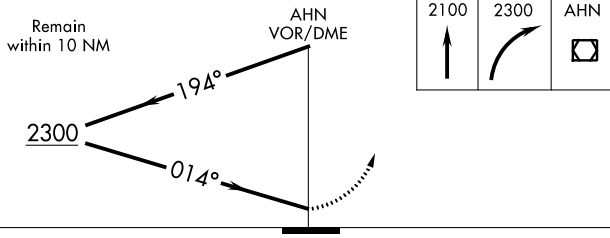
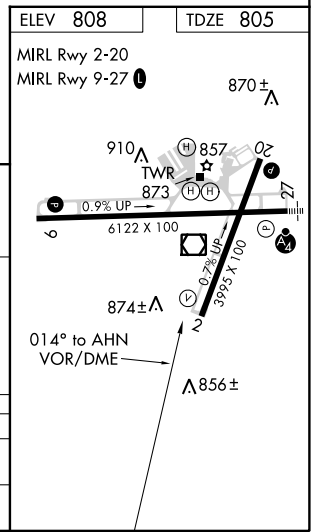
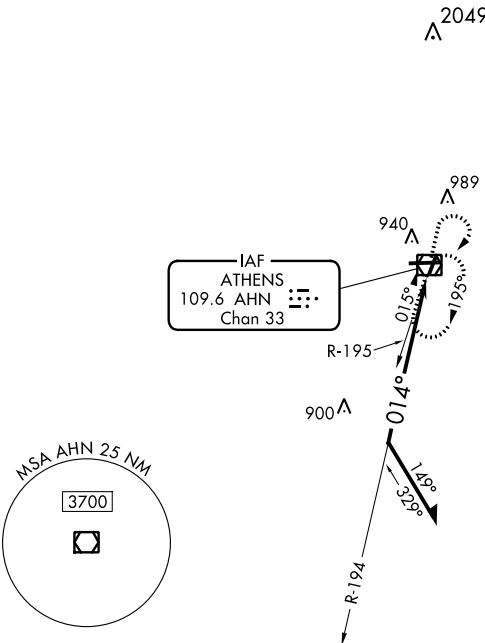
ATHENS/BEN EPPS (AHN)

⚠ When VGSI inop, Circling Rwy 20 NA at night. When VGSI inop, Straight-in/Circling Rwy 2 procedure NA at night. Visibility reduction by helicopters NA. When local altimeter setting not received, use Winder altimeter setting and increase all MDA 60 feet, and S-2 Cat D visibility ¼ mile.

MISSED APPROACH: Climb to 2100 then climbing right turn to 2300 direct AHN VOR/DME and hold.

ASOS	ATLANTA APP CON *	ATHENS TOWER *	GND CON	CLNC DEL	CLNC DEL
132.875	132.475 291.1 316.05	126.3 (CTAF) 0 338.275	121.8	121.8	132.475 291.1 316.05 (when tower closed)

UNICOM
122.95



CATEGORY	A	B	C	D
S-2	1220-1	415 (500-1)	1220-1¼	415 (500-1¼)
CIRCLING	1260-1	452 (500-1)	1260-1½	1360-2 452 (500-1½) 552 (600-2)

SE-4, 03 JAN 2019 to 31 JAN 2019

SE-4, 03 JAN 2019 to 31 JAN 2019