

VOR/DME AHN <b>109.6</b> Chan <b>33</b>	APP CRS <b>262°</b>	Rwy Idg <b>6122</b> TDZE <b>813</b> Apt Elev <b>813</b>
---	------------------------	---

# VOR RWY 27

ATHENS/BEN EPPS (AHN)

**⚠** Night landing: Rwy 2, 20 NA. When local altimeter setting not received, use Winder altimeter setting: increase all MDA 60 feet and S-27 Cats C and D visibility to 1½ mile, and Circling Cat C visibility to 1½ mile, and Cat D to 2¼ mile. VDP NA when using Winder altimeter setting. For inop MALSF increase S-27 Cats A and B visibility to 1 mile, and Cats C and D to 1½ mile. For inop MALSF when using Winder altimeter setting increase S-27 Cats A and B visibility to 1 mile, and Cats C and D to 1½ mile.

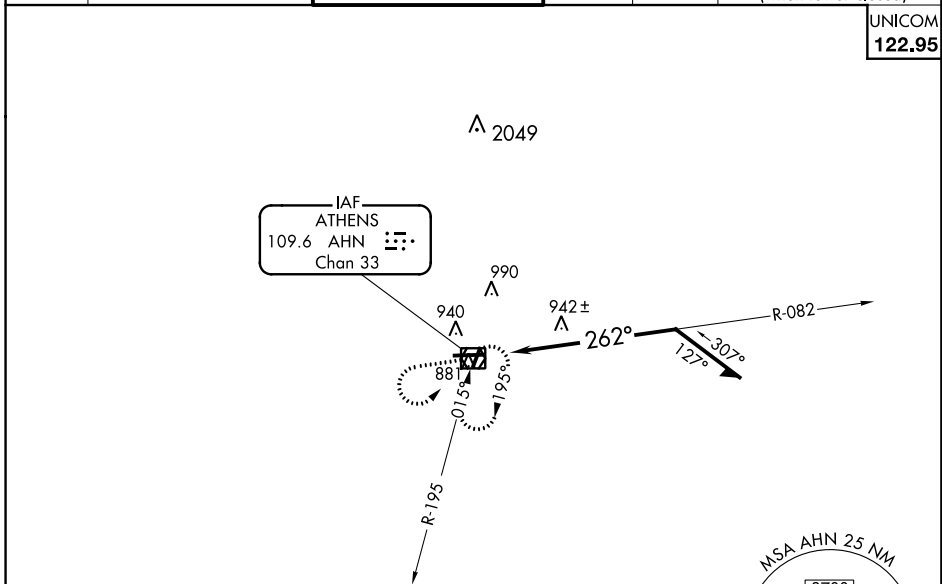
MALSF



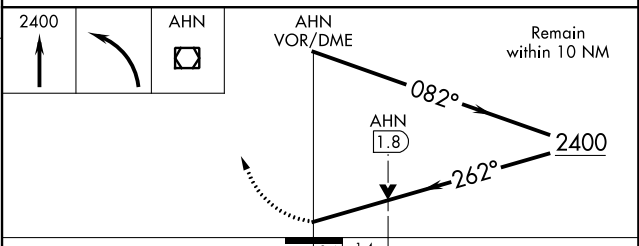
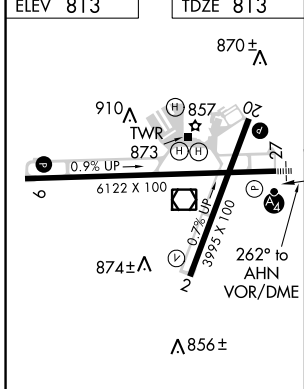
MISSED APPROACH:  
Climb to 2400 then left turn direct AHN VOR/DME and hold.

ASOS <b>132.875</b>	ATLANTA APP CON ★ <b>132.475 291.1 316.05</b>	ATHENS TOWER ★ <b>126.3</b> (CTAF) <b>0 338.275</b>	GND CON <b>121.8</b>	CLNC DEL <b>121.8</b>	CLNC DEL <b>132.475 291.1 316.05</b> (when tower closed)
------------------------	--	--	-------------------------	--------------------------	--

UNICOM  
**122.95**



ELEV 813	TDZE 813
----------	----------



CATEGORY	A	B	C	D
S-27	1300-¾	487 (500-¾)	1300-1½	487 (500-1½)
<b>C</b> CIRCLING	1300-1	487 (500-1)	1320-1½ 507 (600-1½)	1460-2 647 (700-2)