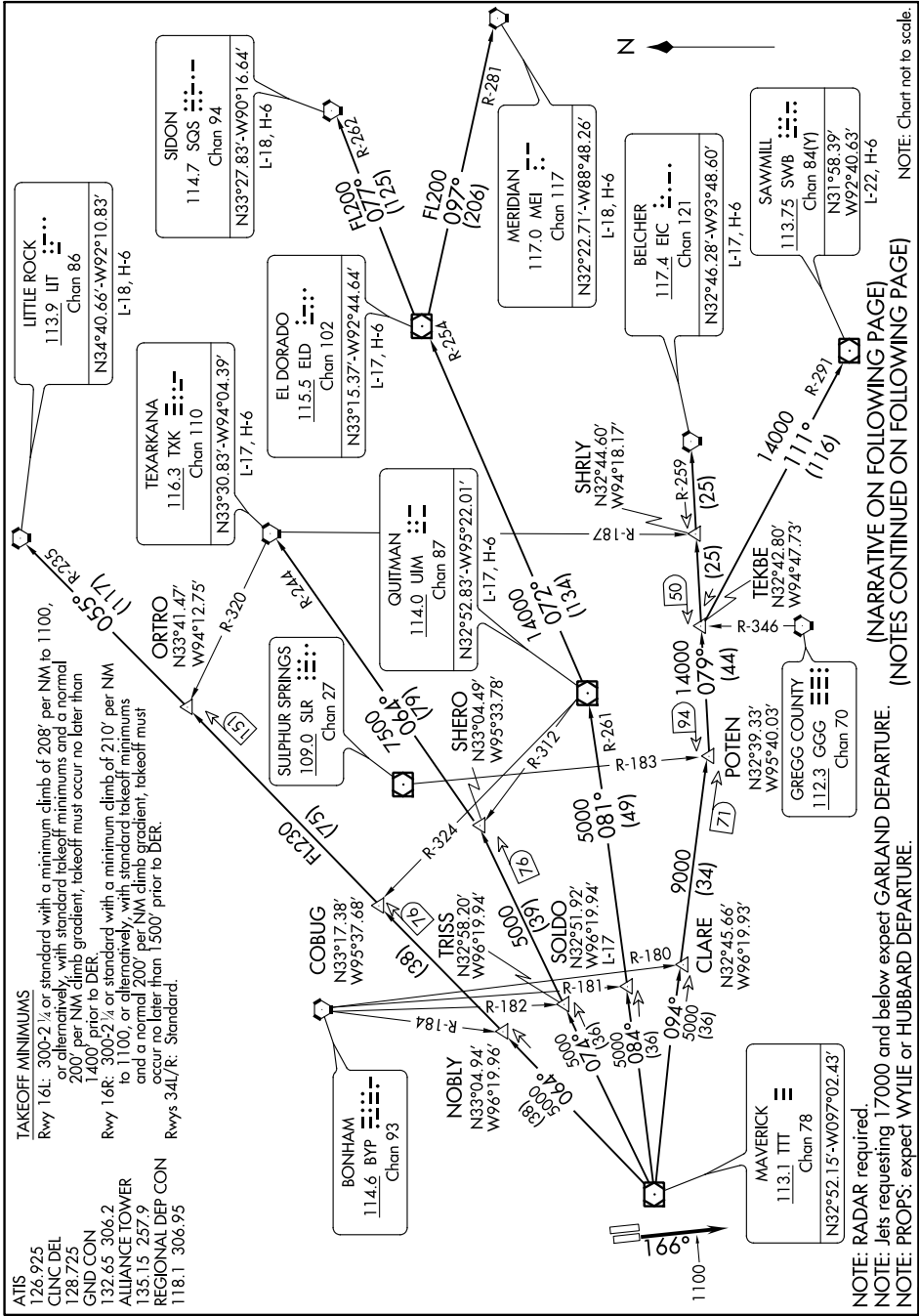


DALLAS FOUR DEPARTURE

FORT WORTH, TEXAS

SC-2, 03 JAN 2019 to 31 JAN 2019



TAKEOFF MINIMUMS
 Rwy 16L: 300'-2 1/2 or standard with a minimum climb of 208' per NM to 1100, or alternatively, with standard takeoff minimums and a normal 200' per NM climb gradient; takeoff must occur no later than 1400' prior to DER.
 Rwy 16R: 300'-2 1/2 or standard with a minimum climb of 210' per NM to 1100, or alternatively, with standard takeoff minimums and a normal 200' per NM climb gradient; takeoff must occur no later than 1500' prior to DER.
 Rwy 34L/R: Standard.

ATIS 126.925
CINC DEL 128.725
GND CON 132.65 306.2
ALLIANCE TOWER 135.15 257.9
REGIONAL DEP CON 118.1 306.95

NOTE: RADAR required.
NOTE: Jets requesting 17000 and below expect GARLAND DEPARTURE.
NOTE: PROPS: expect WYLIE or HUBBARD DEPARTURE.

(NARRATIVE ON FOLLOWING PAGE)
(NOTES CONTINUED ON FOLLOWING PAGE)

NOTE: Chart not to scale.

DALLAS FOUR DEPARTURE

FORT WORTH, TEXAS

SC-2, 03 JAN 2019 to 31 JAN 2019