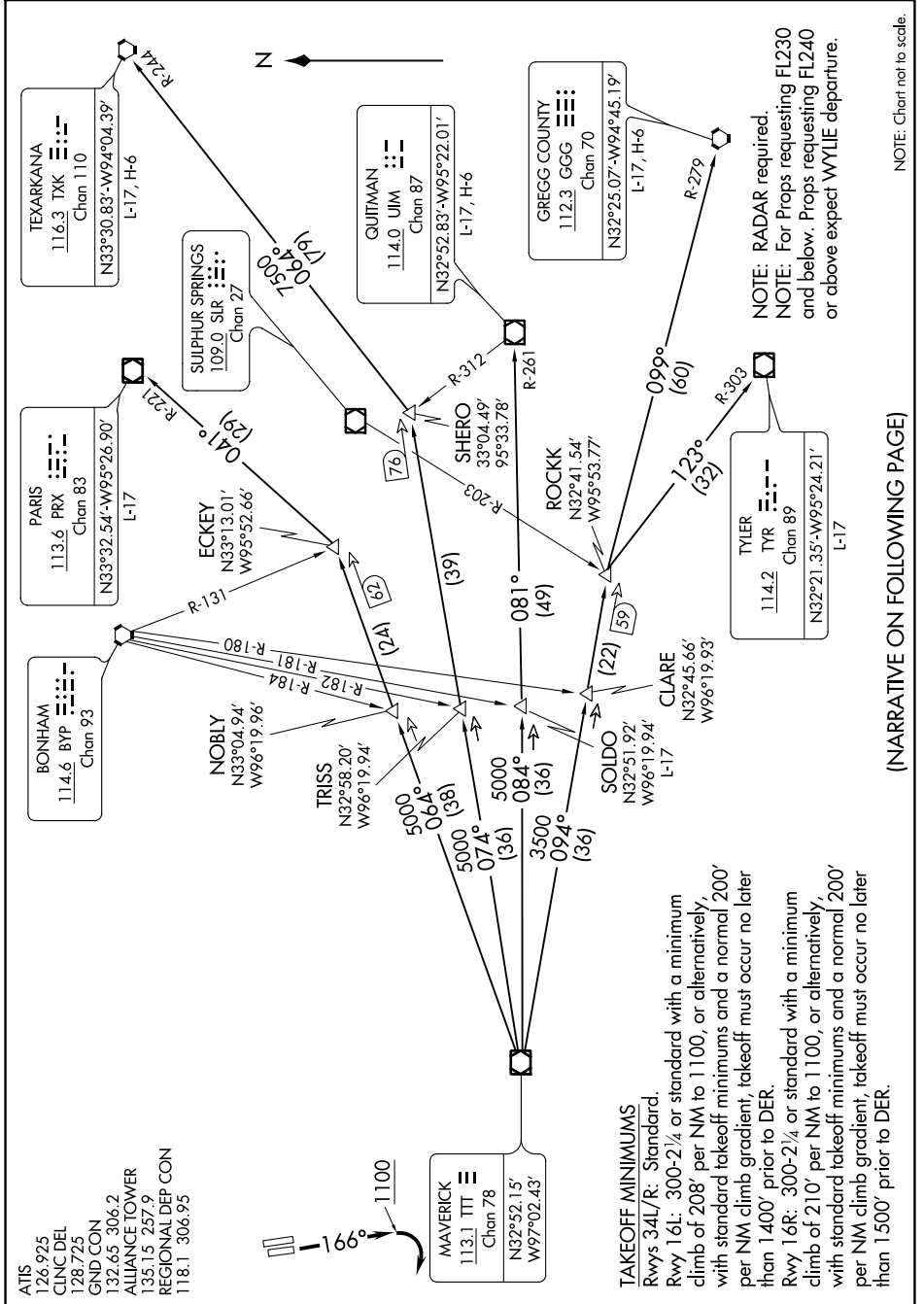


HUBBARD NINE DEPARTURE

SC-2, 03 JAN 2019 to 31 JAN 2019



- ATIS 126.925
- CINC DEL 128.725
- GND CON 132.65, 306.2
- ALLIANCE TOWER 135.15, 257.9
- REGIONAL DEP CON 118.1, 306.95

(NARRATIVE ON FOLLOWING PAGE)

SC-2, 03 JAN 2019 to 31 JAN 2019

NOTE: Chart not to scale.