

LOC/DME I-UP/E <b>110.15</b> Chan <b>38</b> (Y)	APP CRS <b>166°</b>	Rwy 16L Idg <b>10600</b> TDZE <b>723</b> Apt Elev <b>723</b>	Rwy 16R Idg <b>10399</b> TDZE <b>721</b> Apt Elev <b>723</b>
---	------------------------	--	--

# ILS or LOC RWY 16L

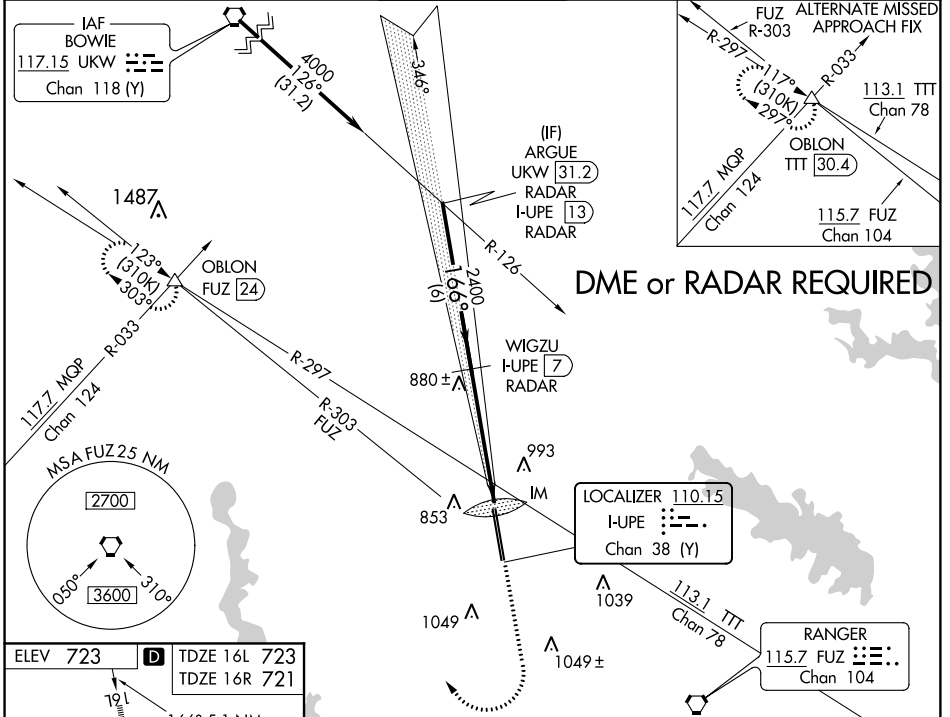
FORT WORTH ALLIANCE (AFW)

**⚠** Circling NA east of Rwy 16L-34R. For inop ALS, increase S-ILS 16L Cat E visibility to RVR 4000 and S-LOC 16L Cat C/D/E visibility to RVR 6000.

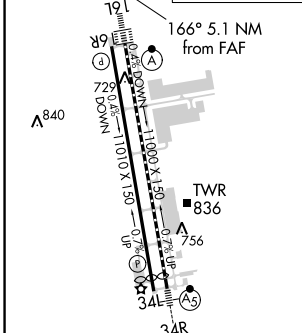
**ALS F2**

**MISSED APPROACH:** Climb to 1200 then climbing right turn to 3000 on heading 330° and FUZ VORTAC R-303 to OBLON INT/FUZ 24 DME and hold.

ATIS <b>126.925</b>	REGIONAL APP CON <b>118.1 306.95</b>	ALLIANCE TOWER <b>135.15 257.9</b>	GND CON <b>132.65 306.2</b>	CLNC DEL <b>128.725</b>
------------------------	---	---------------------------------------	--------------------------------	----------------------------



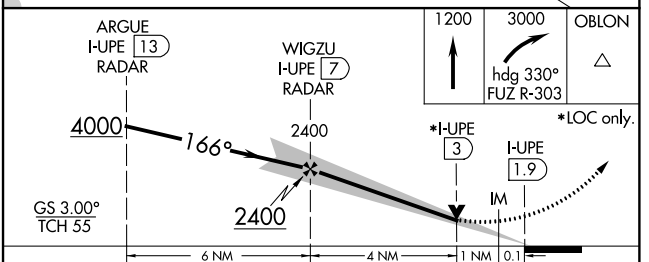
ELEV <b>723</b>	<b>D</b> TDZE 16L <b>723</b> TDZE 16R <b>721</b>
-----------------	---



TDZ/CL Rwy 16L  
HIRL Rwys 16L-34R and 16R-34L  
REIL Rwys 16R and 34L

FAF to MAP 5.1 NM

Knots	60	90	120	150	180
Min:Sec	5:06	3:24	2:33	2:02	1:42



CATEGORY	A	B	C	D	E
S-ILS 16L	923/18 200 (200-½)				
S-LOC 16L	1140/24	417 (500-½)	1140/40 417 (500-¾)		
SIDESTEP 16R	1140-1	419 (500-1)	1140-1½ 419 (500-1½)	1140-2	419 (500-2)
<b>C</b> CIRCLING	1160-1 437 (500-1)	1320-1 597 (600-1)	1360-1¾ 637 (700-1¾)	1380-2 657 (700-2)	1380-2½ 657 (700-2½)

SC-2, 03 JAN 2019 to 31 JAN 2019

SC-2, 03 JAN 2019 to 31 JAN 2019