

JOE POOL NINE DEPARTURE

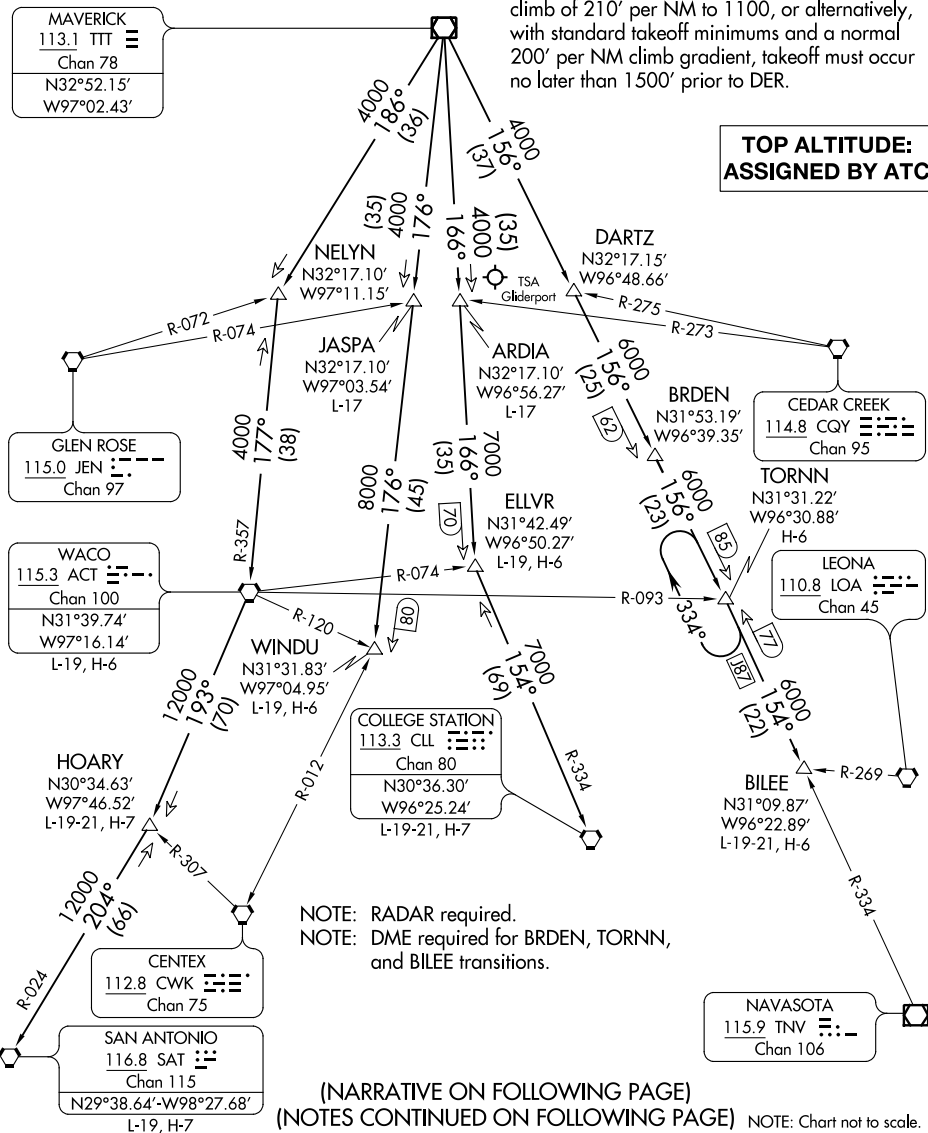
ATIS
126.925
CLNC DEL
128.725
GND CON
132.65 306.2
ALLIANCE TOWER
135.15 257.9
REGIONAL DEP CON
118.1 306.95



TAKEOFF MINIMUMS

Rwys 34L, 34R: Standard.
Rwy 16L: 300-2¼ or standard with minimum climb of 208' per NM to 1100, or alternatively, with standard takeoff minimums and a normal 200' per NM climb gradient, takeoff must occur no later than 1400' prior to DER.
Rwy 16R: 300-2¼ or standard with minimum climb of 210' per NM to 1100, or alternatively, with standard takeoff minimums and a normal 200' per NM climb gradient, takeoff must occur no later than 1500' prior to DER.

**TOP ALTITUDE:
ASSIGNED BY ATC**



NOTE: RADAR required.
NOTE: DME required for BRDEN, TORNN, and BILEE transitions.

(NARRATIVE ON FOLLOWING PAGE)
(NOTES CONTINUED ON FOLLOWING PAGE) NOTE: Chart not to scale.

SC-2, 03 JAN 2019 to 31 JAN 2019

SC-2, 03 JAN 2019 to 31 JAN 2019

JOE POOL NINE DEPARTURE