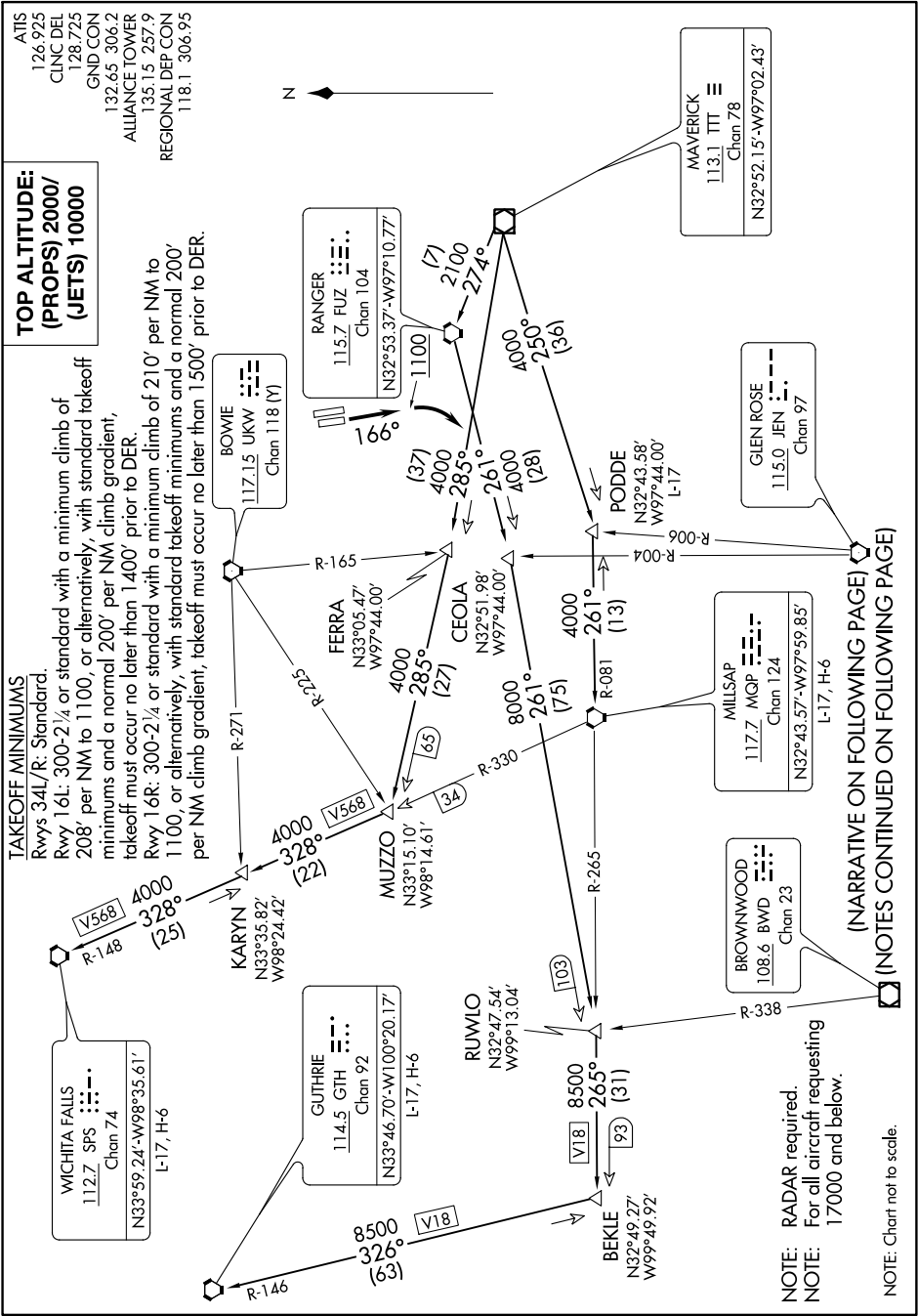


KINGDOM FOUR DEPARTURE

ATIS
126.925
CLINC DEL
128.725
GND CON
132.65 306.2
ALLIANCE TOWER
135.15 257.9
REGIONAL DEP CON
118.1 306.95

**TOP ALTITUDE:
(PROPS) 2000/
(JETS) 10000**

TAKEOFF MINIMUMS
Rwys 34L/R: Standard.
Rwy 16L: 300-2¼, or standard with a minimum climb of 208' per NM to 1100, or alternatively, with standard takeoff minimums and a normal 200' per NM climb gradient, takeoff must occur no later than 1400' prior to DER.
Rwy 16R: 300-2¼, or standard with a minimum climb of 210' per NM to 1100, or alternatively, with standard takeoff minimums and a normal 200' per NM climb gradient, takeoff must occur no later than 1500' prior to DER.



NOTE: RADAR required.
NOTE: For all aircraft requesting 17000 and below.

NOTE: Chart not to scale.

(NARRATIVE ON FOLLOWING PAGE)
(NOTES CONTINUED ON FOLLOWING PAGE)

KINGDOM FOUR DEPARTURE