

KUSSO FIVE DEPARTURE (RNAV)

SC-2, 03 JAN 2019 to 31 JAN 2019

TAKEOFF MINIMUMS

Rwys 34L/R: Standard.

Rwy 16L: 300-2¼ or standard with a minimum climb of 208' per NM to 1100, or alternatively, with standard takeoff minimums and a normal 200' per NM climb gradient, takeoff must occur no later than 1400' prior to DER.

Rwy 16R: 300-2¼ or standard with a minimum climb of 210' per NM to 1100, or alternatively, with standard takeoff minimums and a normal 200' per NM climb gradient, takeoff must occur no later than 1500' prior to DER.

ALLIANCE TOWER

132.65 306.2
 135.15 257.9
 REGIONAL DEP CON
 118.1 306.95

ATIS 126.925

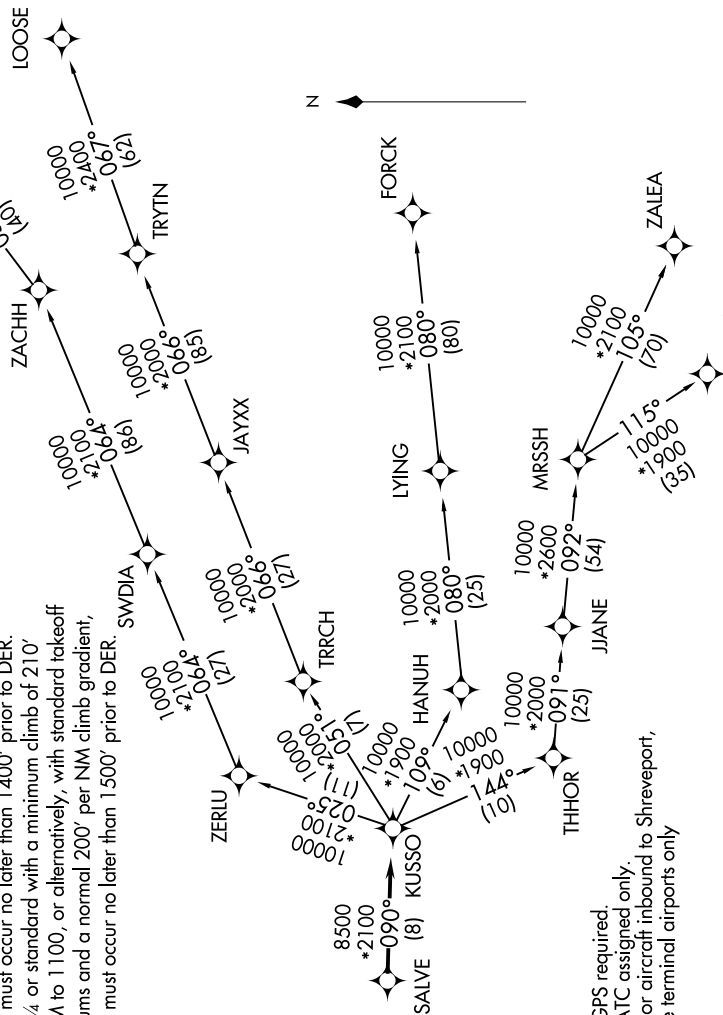
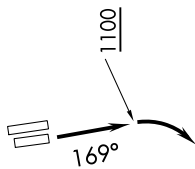
CINC DEL 128.725

GND CON 132.65

135.15 257.9

REGIONAL DEP CON 118.1 306.95

TOP ALTITUDE: ASSIGNED BY ATC



NOTE: RADAR required.
 NOTE: RNAV 1.
 NOTE: DME/DME/IRU or GPS required.
 NOTE: BDDAY transition: ATC assigned only.
 NOTE: MRSSH transition: For aircraft inbound to Shreveport, Jackson and Monroe terminal airports only

(NARRATIVE ON FOLLOWING PAGE)

NOTE: Chart not to scale.

KUSSO FIVE DEPARTURE (RNAV)

SC-2, 03 JAN 2019 to 31 JAN 2019