

WAAS CH 99338 W16A	APP CRS 166°	Rwy Idg 10399 TDZE 721 Apt Elev 723
--	------------------------	--

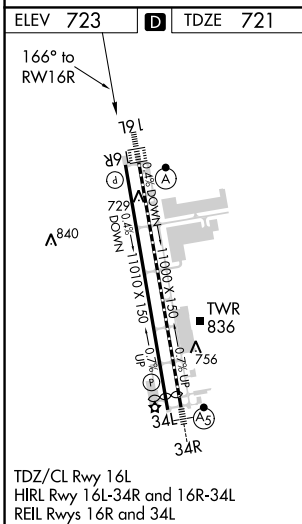
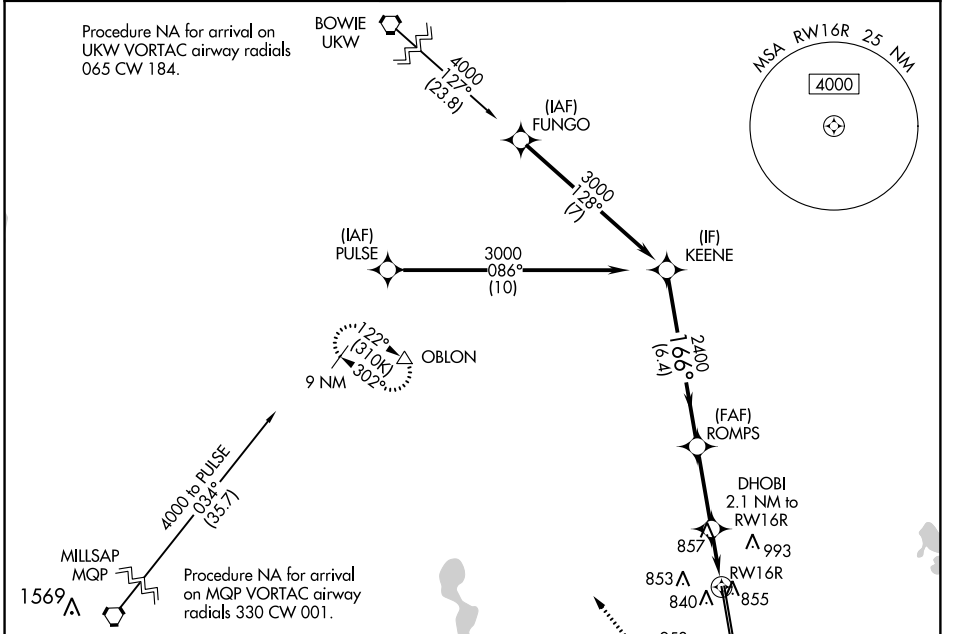
RNAV (GPS) RWY 16R

FORT WORTH ALLIANCE (AFW)

⚠ For uncompensated Baro-VNAV systems, LNAV/VNAV NA below -9°C (16°F) or above 54°C (130°F). Circling NA east of Rwy 16L-34R. DME/DME RNP-0.3 NA.

⚠ MISSED APPROACH: Climb to 1200 then climbing right turn to 3000 direct OBLON and hold.

ATIS 126.925	REGIONAL APP CON 118.1 306.95	ALLIANCE TOWER 135.15 257.9	GND CON 132.65 306.2	CLNC DEL 128.725
------------------------	---	---------------------------------------	--------------------------------	----------------------------



VGSI and RNAV glidepath not coincident (VGSI Angle 3.00/TCH 75).

1200 3000 OBLON

↑ ↻ △

GP 3.00° TCH 55

3000 166° 2400

6.4 NM 3 NM 1.1 NM 1 NM

*1.440 *1 NM to RWY 16R *LNAV only.

CATEGORY	A	B	C	D	E
LPV DA		921-3/4	200 (200-3/4)		
LNAV/VNAV DA		1017-7/8	296 (300-7/8)		
LNAV MDA	1120-1	399 (400-1)	1120-1 1/8	399 (400-1 1/8)	
C CIRCLING	1200-1 477 (500-1)	1320-1 597 (600-1)	1360-1 3/4 637 (700-1 3/4)	1380-2 657 (700-2)	1380-2 1/4 657 (700-2 1/4)

SC-2, 03 JAN 2019 to 31 JAN 2019

SC-2, 03 JAN 2019 to 31 JAN 2019