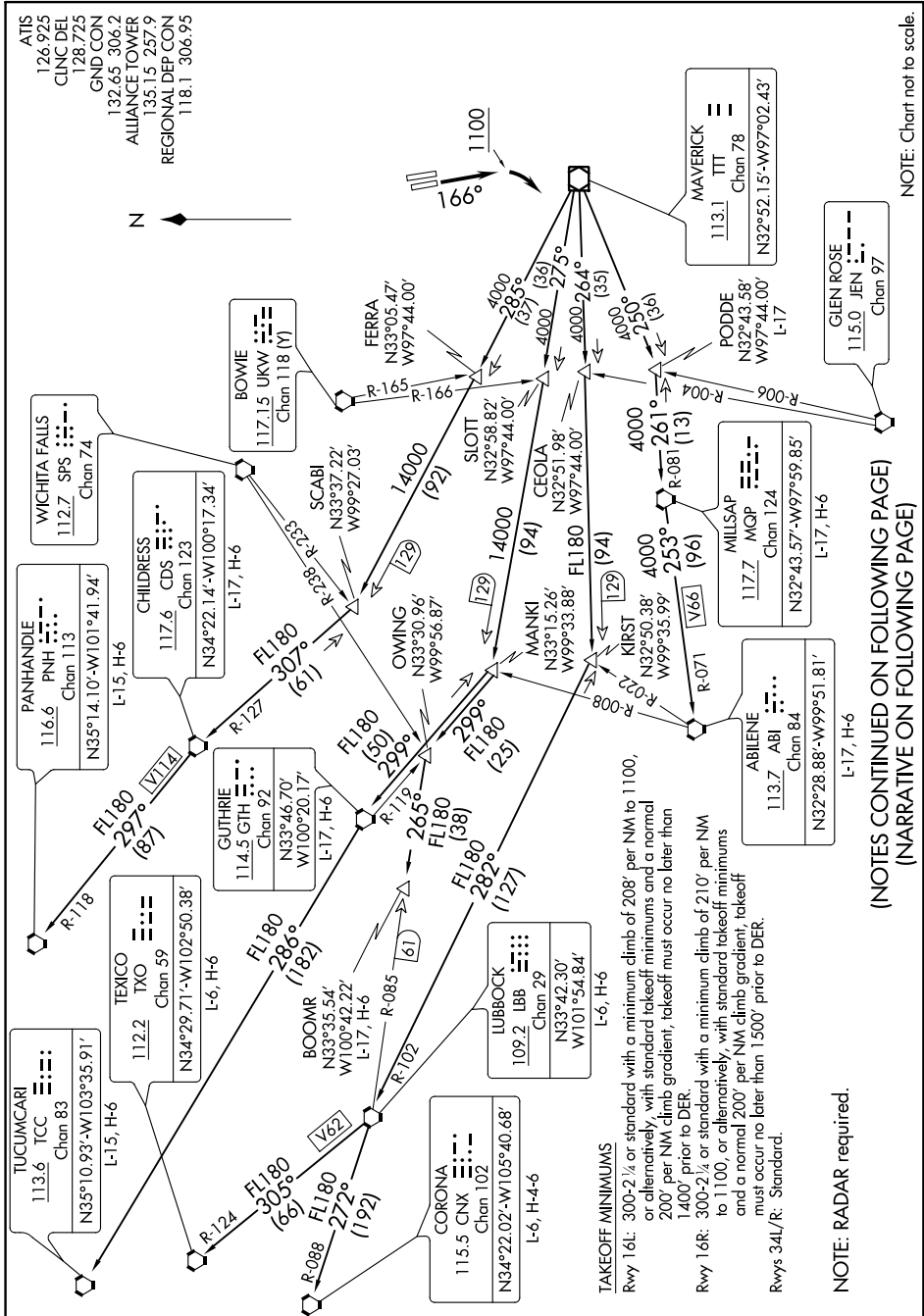


WORTH ONE DEPARTURE

SC-2, 03 JAN 2019 to 31 JAN 2019



WORTH ONE DEPARTURE

(NOTES CONTINUED ON FOLLOWING PAGE)
(NARRATIVE ON FOLLOWING PAGE)

TAKEOFF MINIMUMS

Rwy 16L: 300-2 1/4 or standard with a minimum climb of 208' per NM to 1100, or alternatively, with standard takeoff minimums and a normal 200' per NM climb gradient, takeoff must occur no later than 1400' prior to DER.

Rwy 16R: 300-2 1/4 or standard with a minimum climb of 210' per NM to 1100, or alternatively, with standard takeoff minimums and a normal 200' per NM climb gradient, takeoff must occur no later than 1500' prior to DER.

Rwys 34L/R: Standard.

NOTE: RADAR required.

NOTE: Chart not to scale.

SC-2, 03 JAN 2019 to 31 JAN 2019