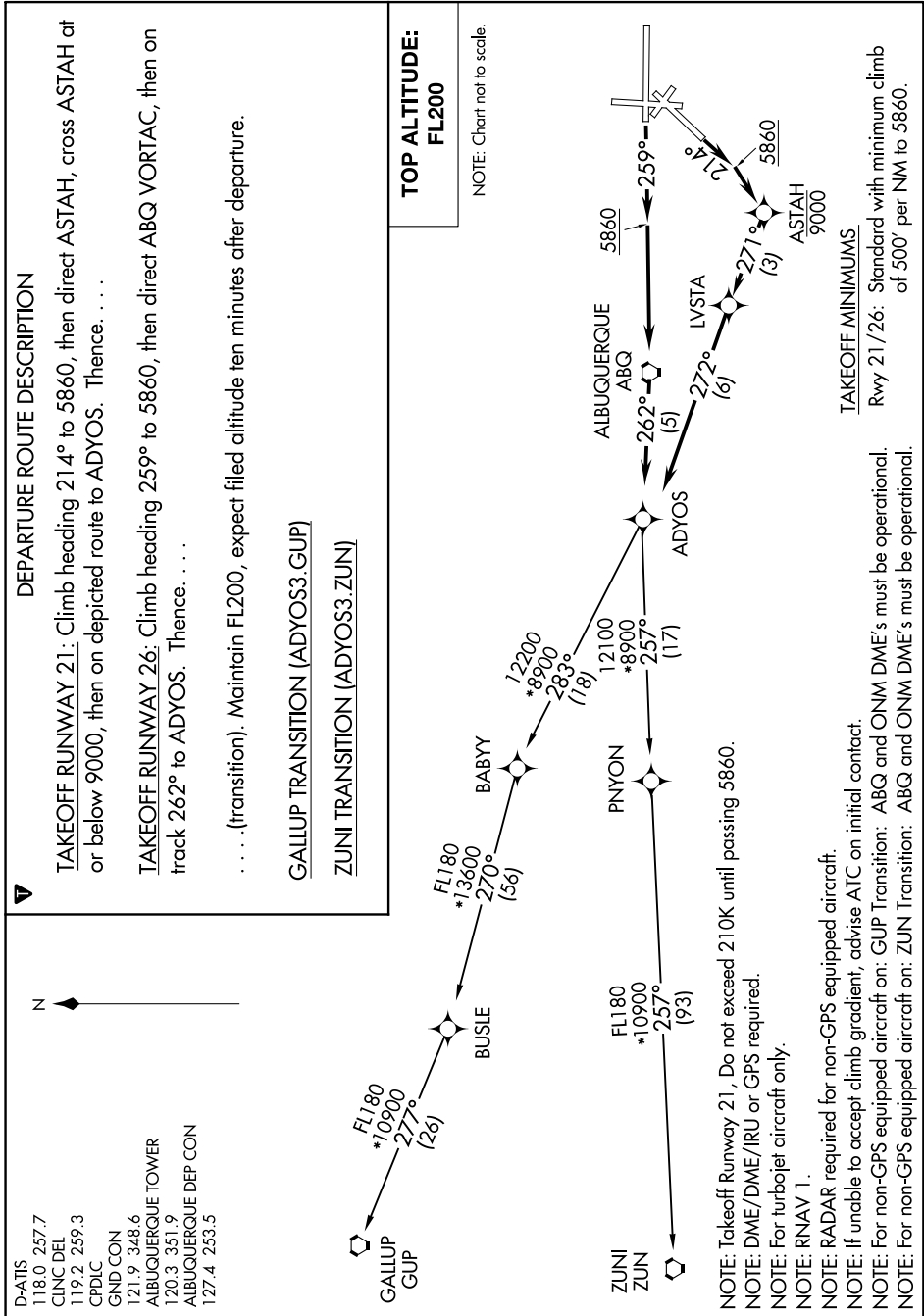


# ADYOS THREE DEPARTURE (RNAV)

AL-12 (FAA)

SW-1, 1-31 JAN 2019 to 28 FEB 2019



# ADYOS THREE DEPARTURE (RNAV)

(ADYOS3.ADYOS) 25JUN15

SW-1, 31 JAN 2019 to 28 FEB 2019

D-ATIS 118.0 257.7  
CLNC DEL 119.2 259.3  
CPDC 121.9 348.6  
GND CON 120.3 351.9  
ALBUQUERQUE TOWER 127.4 253.5  
ALBUQUERQUE DEP CON

ZUNI 12100 8900 257 (17)  
PNYON 12100 8900 257 (17)  
BUSIE FL180 \*13600 270 (56)  
BABYY 12200 8900 283 (118)  
FL180 \*10900 277 (26)  
GALLUP GUP

ALBUQUERQUE 5860  
ABQ 262 (5)  
LVSTA 272 (6)  
271 (3)  
ASTAH 9000  
5860

259 (21)

NOTE: Takeoff Runway 21, Do not exceed 210K until passing 5860.  
NOTE: DME/DME/IRU or GPS required.  
NOTE: For turbojet aircraft only.  
NOTE: RNAV 1.  
NOTE: RADAR required for non-GPS equipped aircraft.  
NOTE: If unable to accept climb gradient, advise ATC on initial contact.  
NOTE: For non-GPS equipped aircraft on: GUP Transition: ABQ and ONM DME's must be operational.  
NOTE: For non-GPS equipped aircraft on: ZUN Transition: ABQ and ONM DME's must be operational.