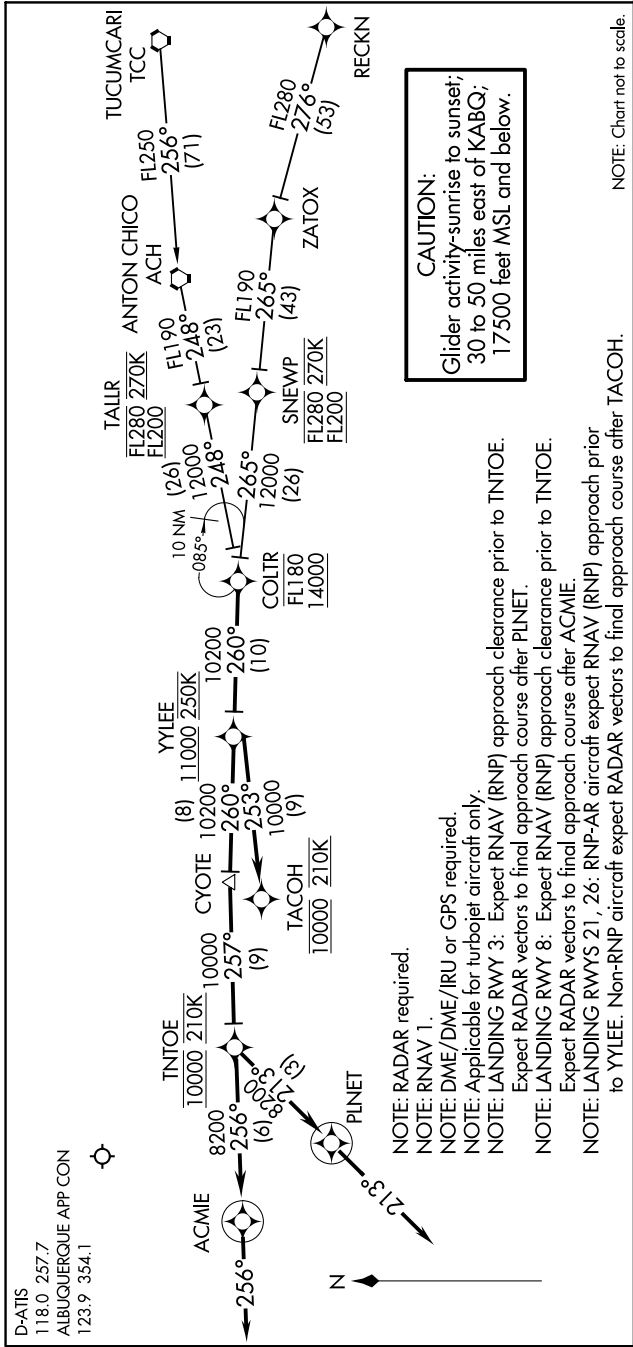


SW-1, 1-31 JAN 2019 to 28 FEB 2019



**ARRIVAL ROUTE DESCRIPTION**

**RECKN TRANSITION (RECKN.COLTR3)**

**TUCUMCARI TRANSITION (TCC.COLTR3)**

From COLTR on track 260° to cross YYLEE at or above 11000 and at 250K.

**LANDING RUNWAY 3:** From YYLEE on track 260° to CYOTE, then on track 257° to cross TINTOE at 10000 and at 210K, then on track 213° to PLINET, then on track 213°. Expect RADAR vectors to final approach course.

**LANDING RUNWAY 8:** From YYLEE on track 260° to CYOTE, then on track 257° to cross TINTOE at 10000 and at 210K, then on track 256° to ACMIE, then on track 256°. Expect RADAR vectors to final approach course.

**LANDING RUNWAYS 21, 26:** From YYLEE on track 253° to cross TACOH at 10000 and at 210K. Expect RNAV (RNP) approach or RADAR vectors to final approach course.

SW-1, 31 JAN 2019 to 28 FEB 2019