

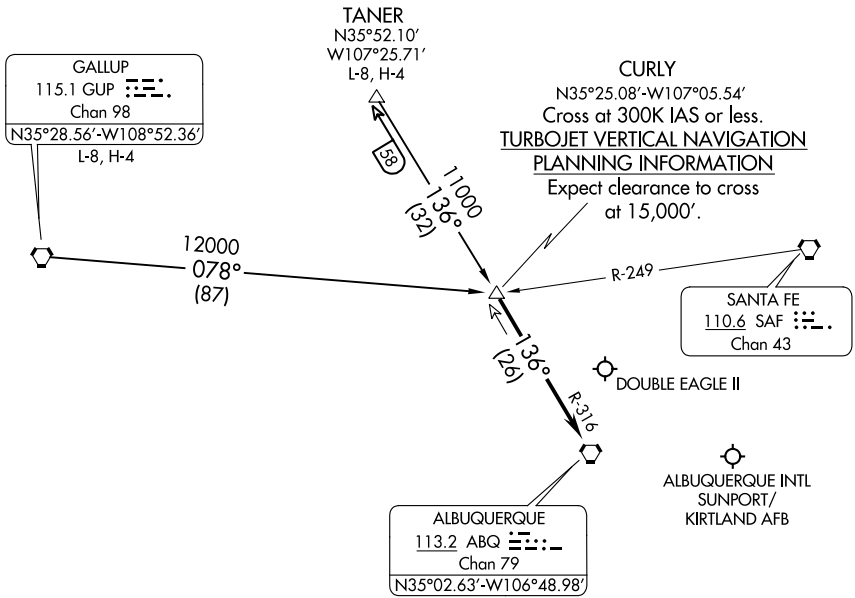
(CURLY.CURLY3) 17117

# CURLY THREE ARRIVAL

AL-12 (FAA)

ALBUQUERQUE, NEW MEXICO

ALBUQUERQUE APP CON  
127.4 253.5  
D-ATIS  
118.0 257.7



SW-1, 31 JAN 2019 to 28 FEB 2019

SW-1, 31 JAN 2019 to 28 FEB 2019

NOTE: Chart not to scale.

GALLUP TRANSITION (GUP.CURLY3): From over GUP VORTAC on GUP R-078 to CURLY. Thence....

TANER TRANSITION (TANER.CURLY3): From over TANER on ABQ R-316 to CURLY. Thence....

....From over CURLY on ABQ R-316 to ABQ VORTAC. Expect vectors to final approach course after passing CURLY.

# CURLY THREE ARRIVAL

ALBUQUERQUE, NEW MEXICO

(CURLY.CURLY3) 02MAR17