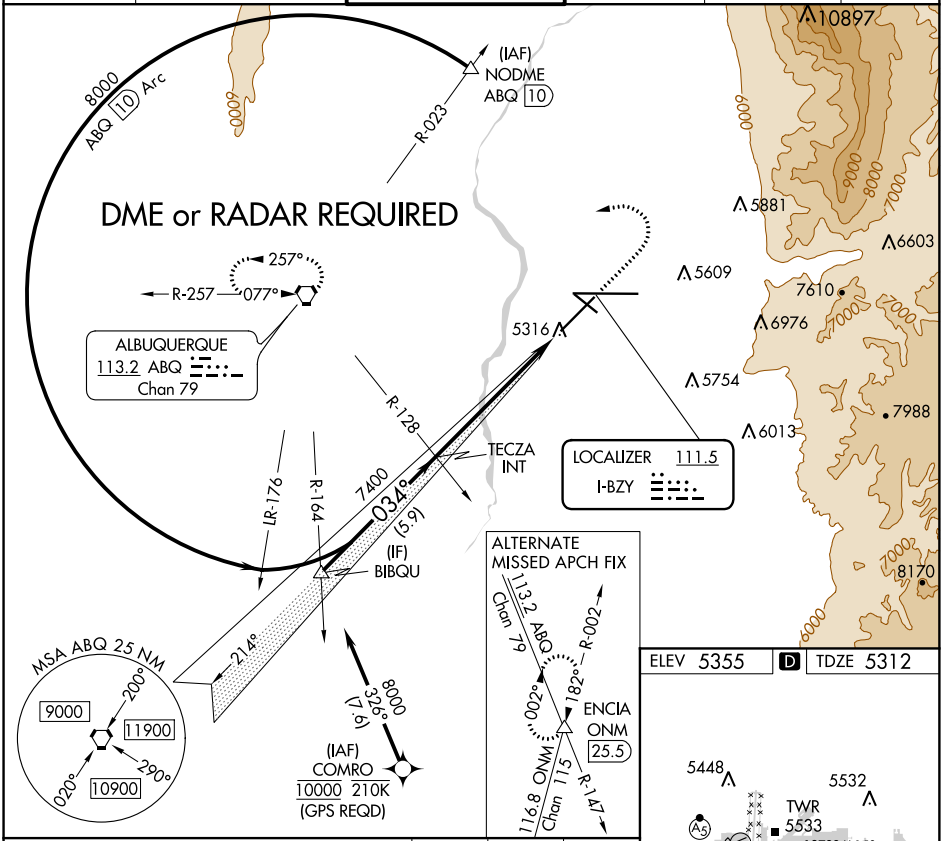


LOC I-BZY 111.5	APP CRS 034°	Rwy Idg 10000
		TDZE 5312
		Apt Elev 5355

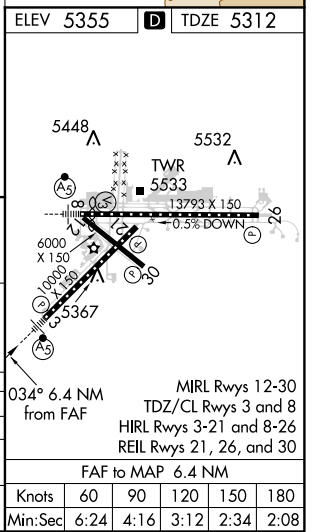
ILS or LOC RWY 3

ALBUQUERQUE INTL SUNPORT (ABQ)

ASR	MALSR	MISSED APPROACH: Climb to 5900 then climbing left turn to 8000 direct ABQ VORTAC and hold.			
D-ATIS 118.0 257.7	ALBUQUERQUE APP CON 123.9 354.1	ALBUQUERQUE TOWER 120.3 351.9	GND CON 121.9 348.6	CLNC DEL 119.2 259.3	CPDLC



BIBQU	8000	TECZA INT	5900	8000	ABQ
	7400		7400		
GS 3.00° TCH 60	034°				
	5.9 NM	6.4 NM			
CATEGORY	A	B	C	D	
S-ILS 3		5512/18	200 (200-½)		
S-LOC 3		5600/24	288 (300-½)		
CIRCLING	5840-1 485 (500-1)	5920-1 565 (600-1)	5940-1½ 585 (600-½)	6460-3 1105 (1200-3)	



SW-1, 31 JAN 2019 to 28 FEB 2019

SW-1, 31 JAN 2019 to 28 FEB 2019