

LOC/DME I-SPT <b>111.9</b> Chan 56	APP CRS <b>079°</b>	Rwy Idg <b>12793</b> TDZE <b>5320</b> Apt Elev <b>5355</b>
--	------------------------	--

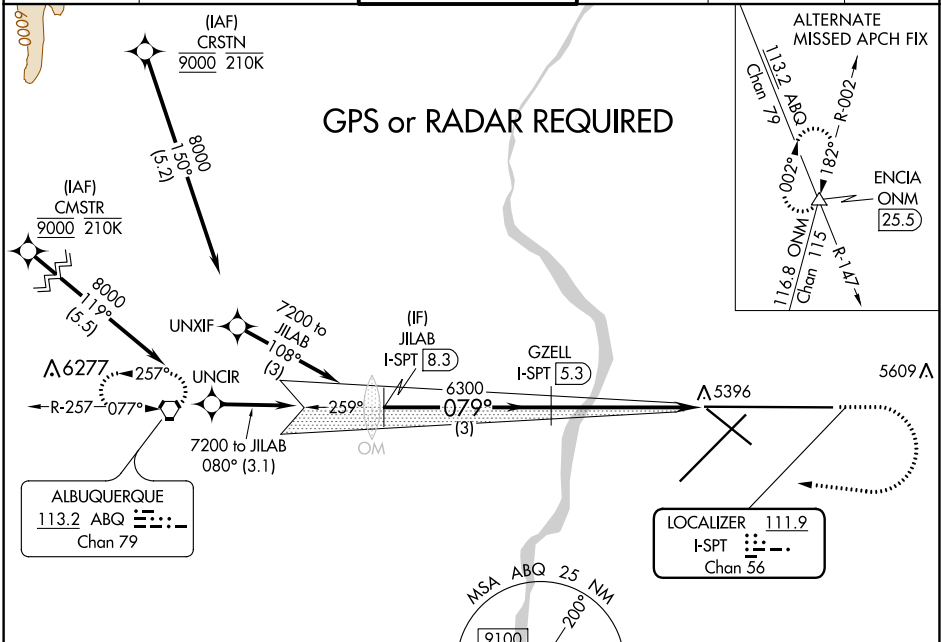
# ILS or LOC RWY 8

ALBUQUERQUE INTL SUNPORT (ABQ)

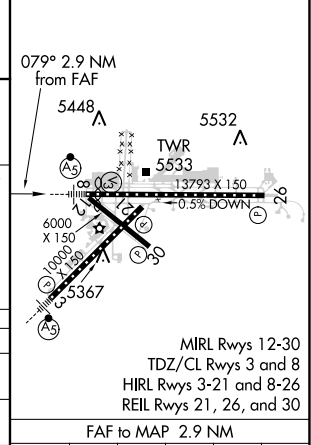
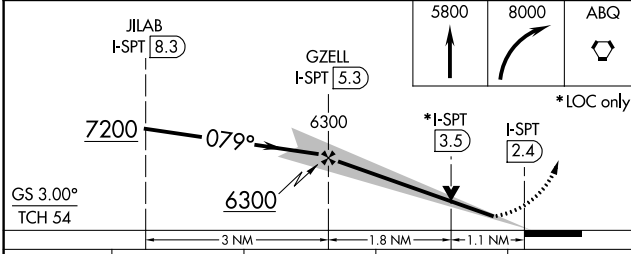
**ASR** DME required. For inop MALS, increase S-LOC 8 Cat C and D visibility to RVR 6000.

**MALS**  
**AS** MISSED APPROACH: Climb to 5800 then climbing right turn to 8000 direct ABQ VORTAC and hold.

D-ATIS <b>118.0 257.7</b>	ALBUQUERQUE APP CON <b>123.9 354.1</b>	ALBUQUERQUE TOWER <b>120.3 351.9</b>	GND CON <b>121.9 348.6</b>	CLNC DEL <b>119.2 259.3</b>	CPDLC
------------------------------	---	---	-------------------------------	--------------------------------	-------



ELEV 5355	<b>D</b> TDZE 5320
-----------	--------------------



CATEGORY	A	B	C	D
S-ILS 8	5527/18		207 (200-1/2)	
S-LOC 8	5720/24	400 (400-1/2)	5720/40	400 (400-3/4)
<b>C</b> CIRCLING	5840-1 485 (500-1)	5920-1 565 (600-1)	5940-1 1/2 585 (600-1 1/2)	6460-3 1105 (1200-3)

FAF to MAP 2.9 NM					
Knots	60	90	120	150	180
Min:Sec	2:54	1:56	1:27	1:10	0:58

SW-1, 31 JAN 2019 to 28 FEB 2019

SW-1, 31 JAN 2019 to 28 FEB 2019